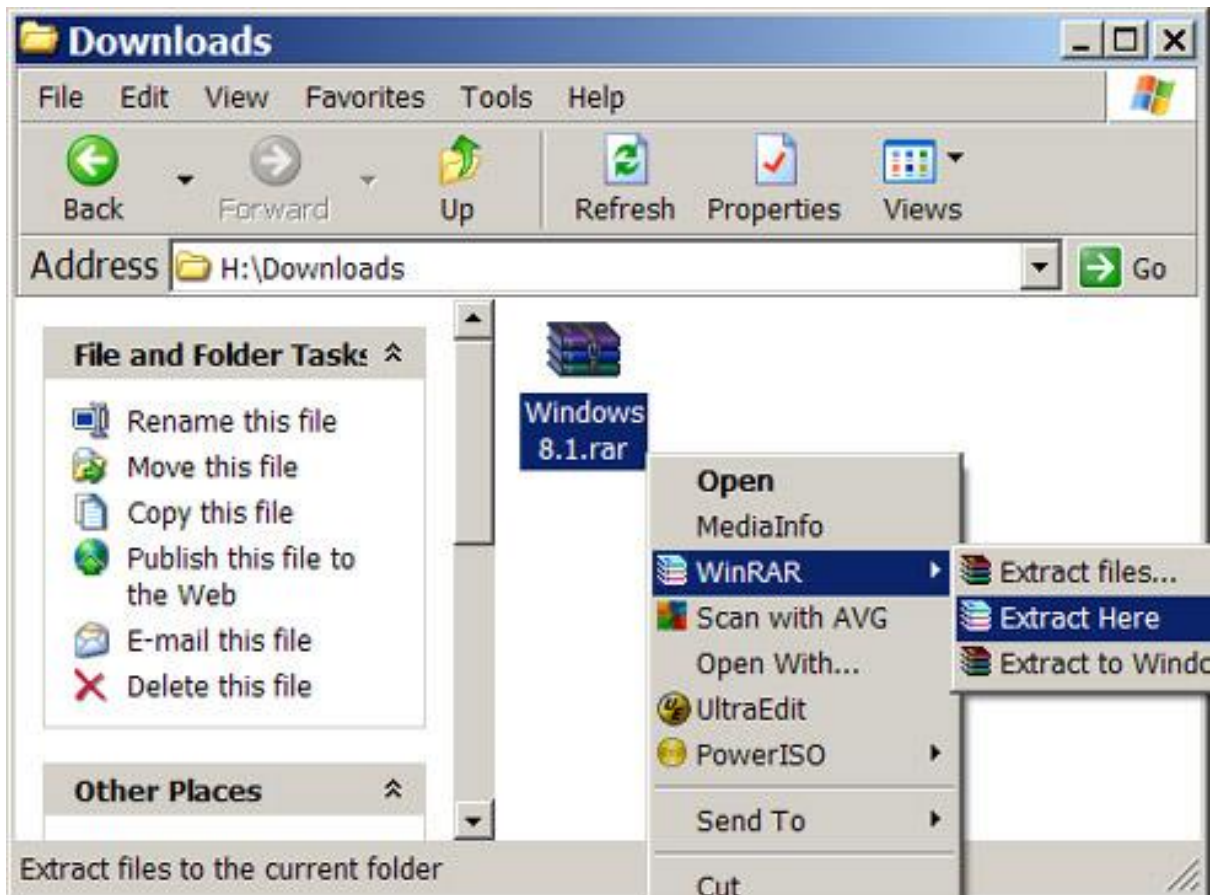


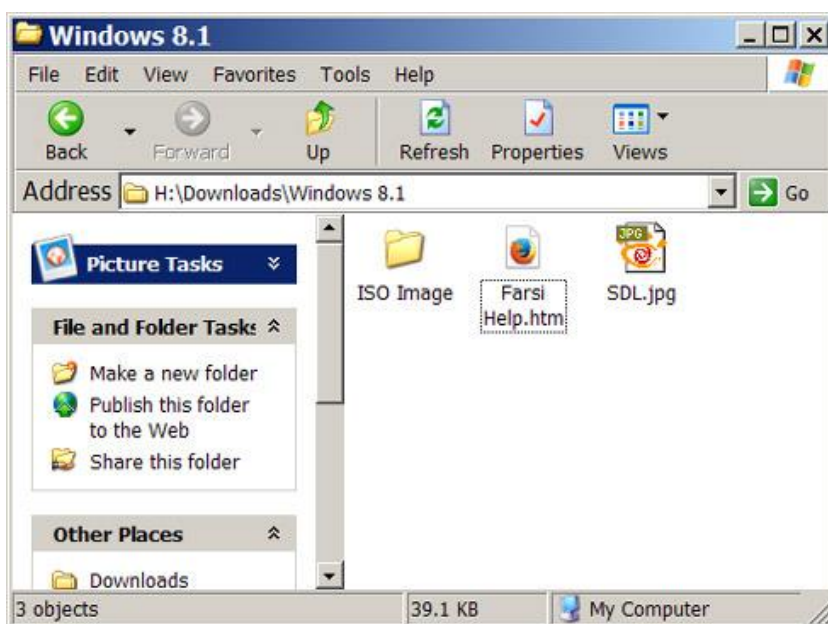
# اصول کلی کار

نصب نرم افزار ها



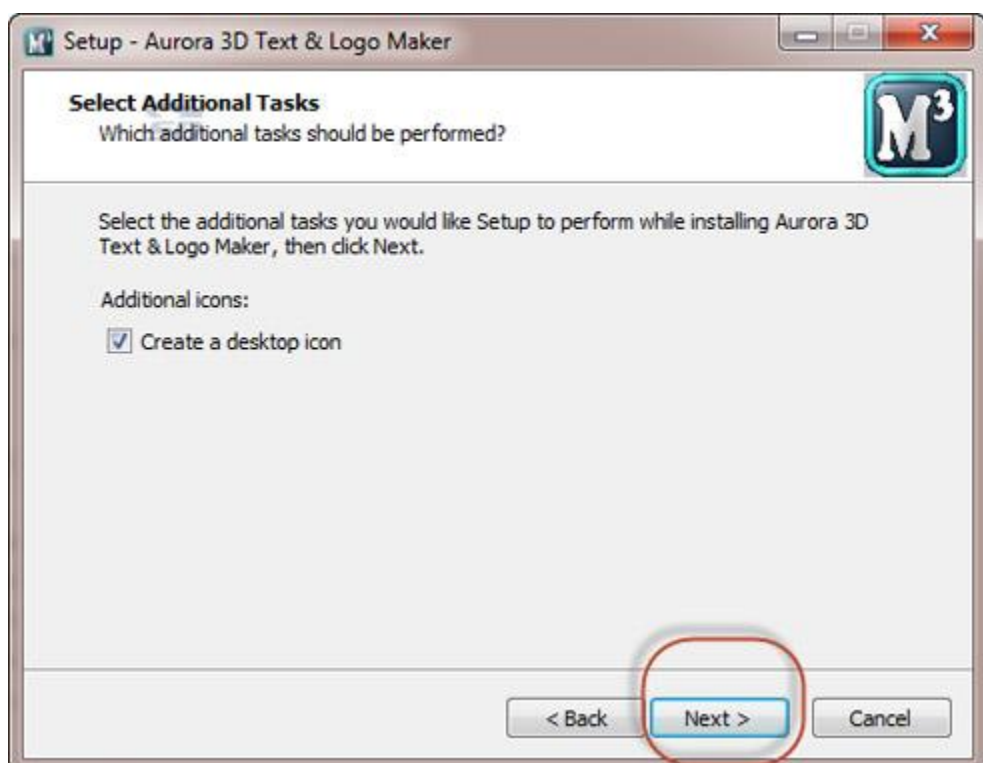
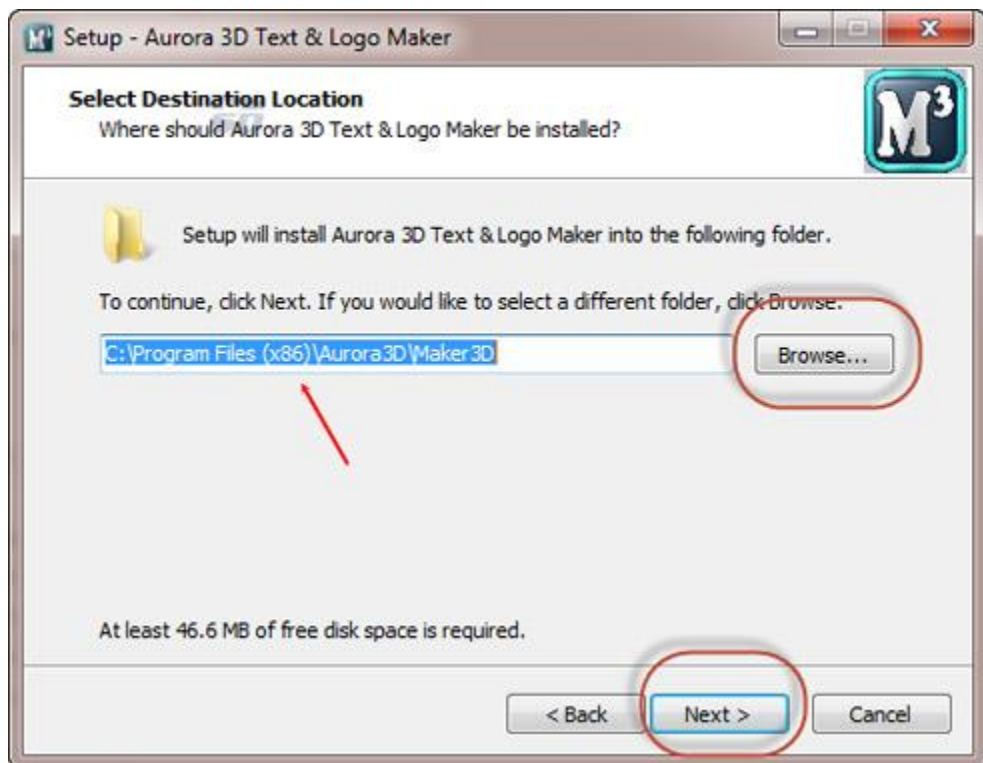


وارد پوشه شوید

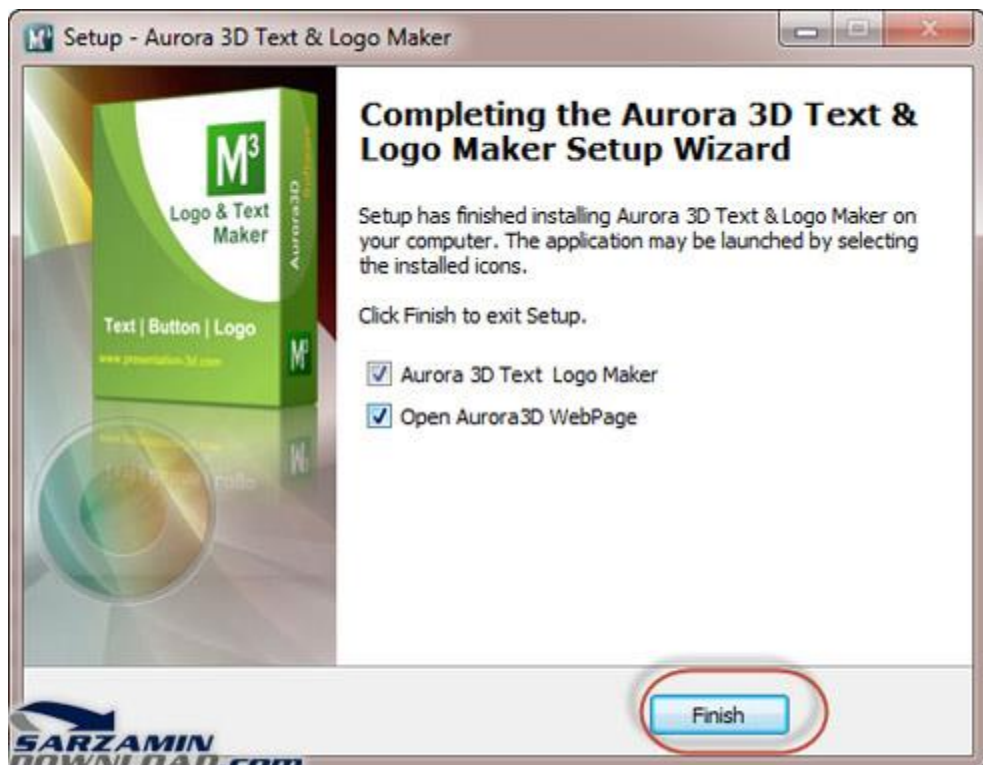
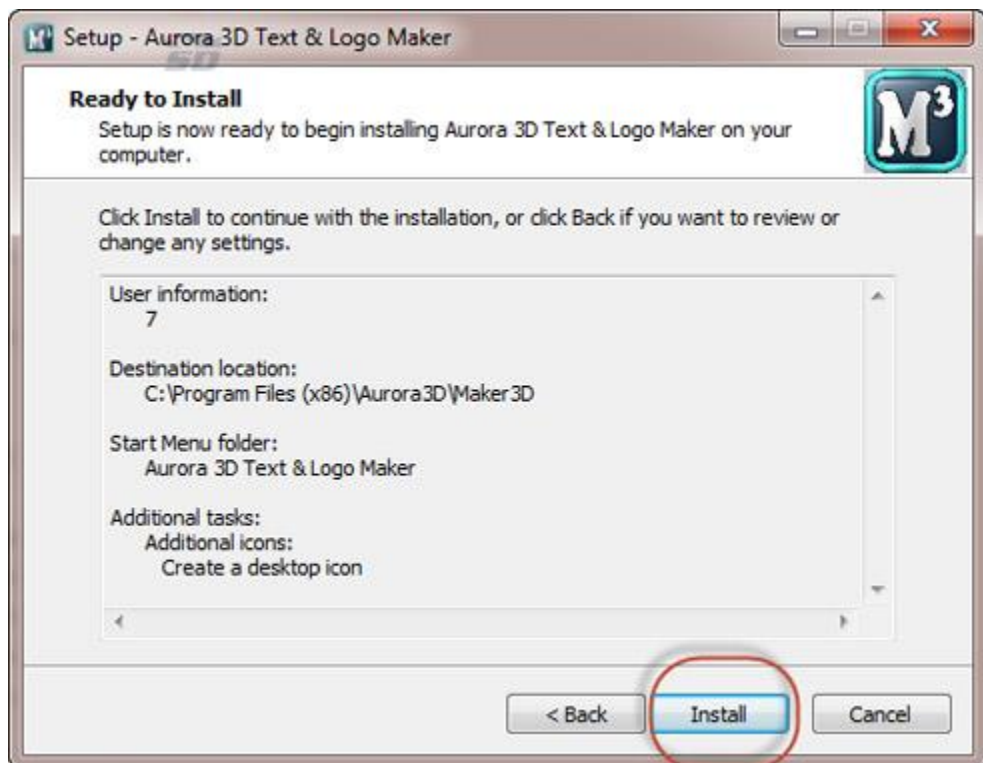


Name	Date modified	Type	Size
Keygen	10/24/2011 1:24 PM	File folder	
Farsi Help.htm	9/16/2014 9:52 AM	Chrome HTML Do...	4 KB
Setup.exe	4/22/2011 4:16 PM	Application	21,606 KB





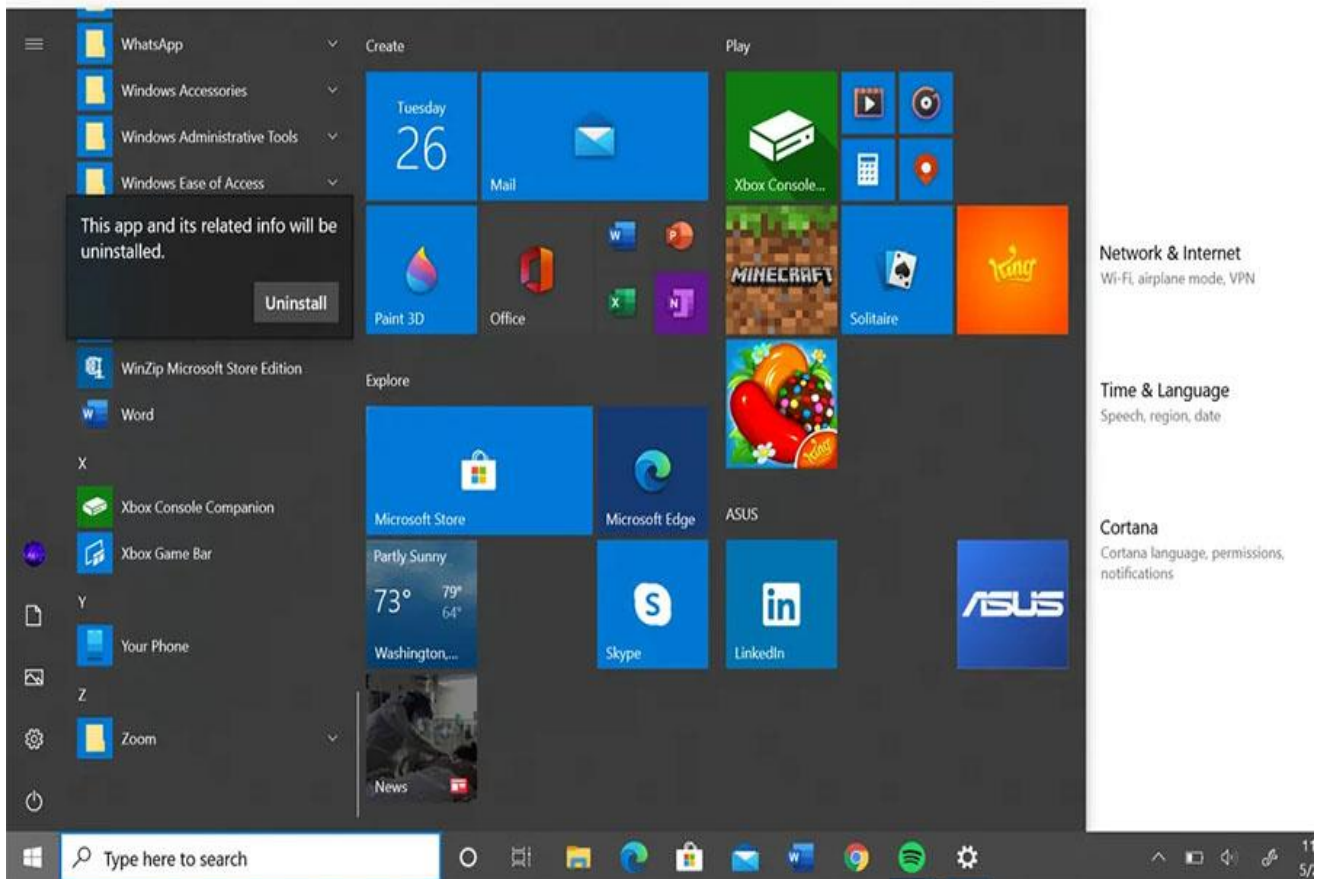




## حذف نرم افزار

- روی منوی استارت کلیک کنید.
- اپلیکیشن را در منوی استارت ویندوز بیابید.
- روی اپلیکیشن راست-کلیک کرده و گزینه Uninstall را انتخاب نمایید.



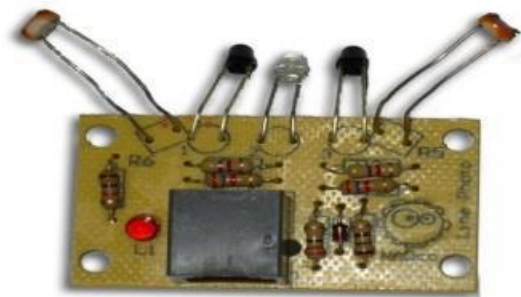


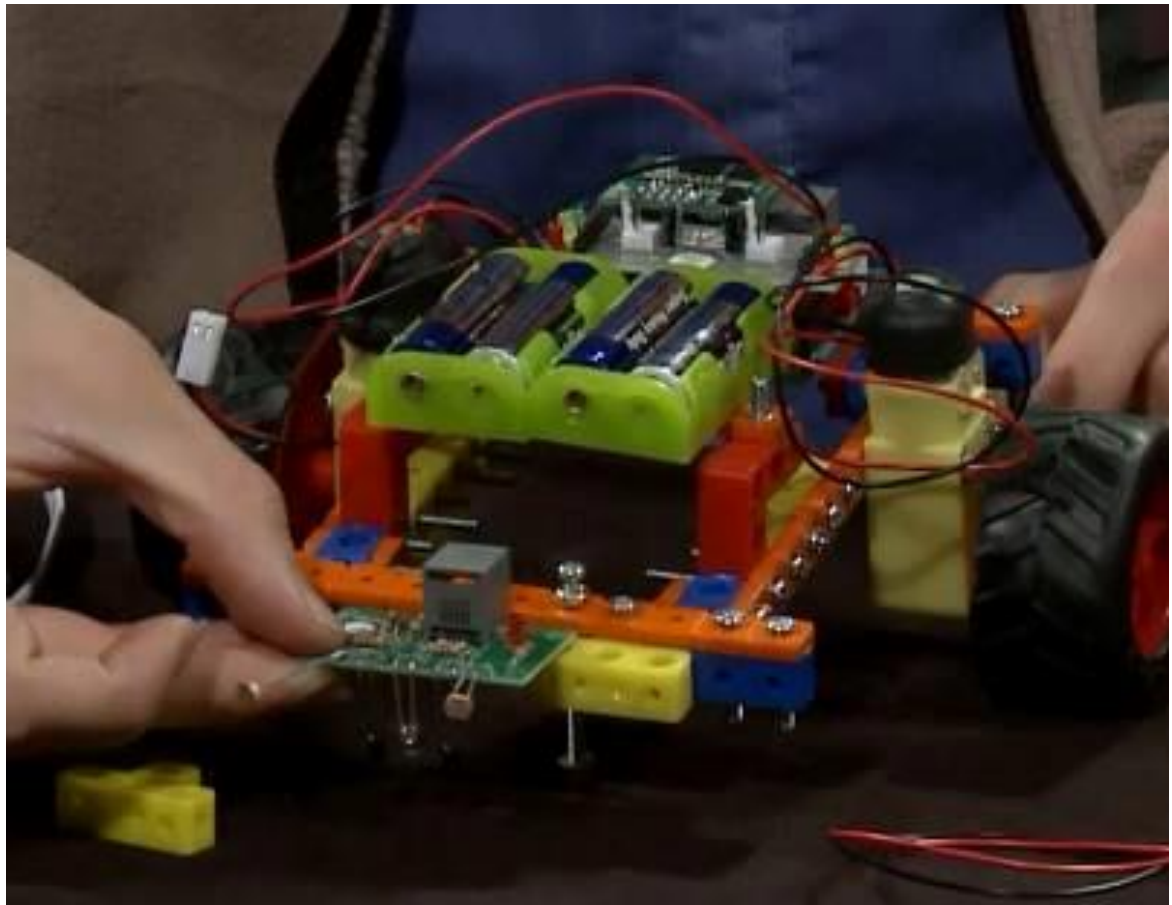


## نرم افزار روبرو



## ماژول دو خط دو نور





Roboro v3.1



**Roboro v3**  
[www.NAD-CO.com](http://www.NAD-CO.com)

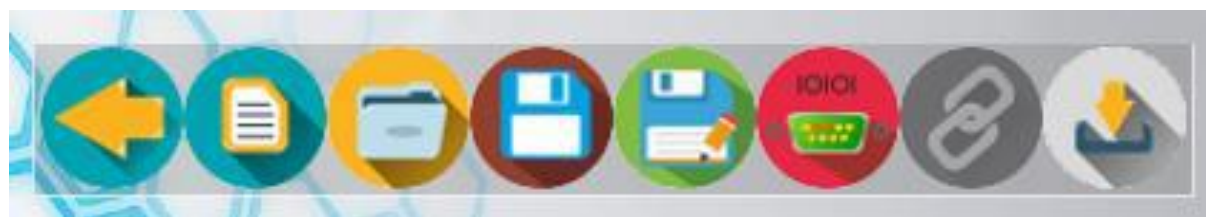
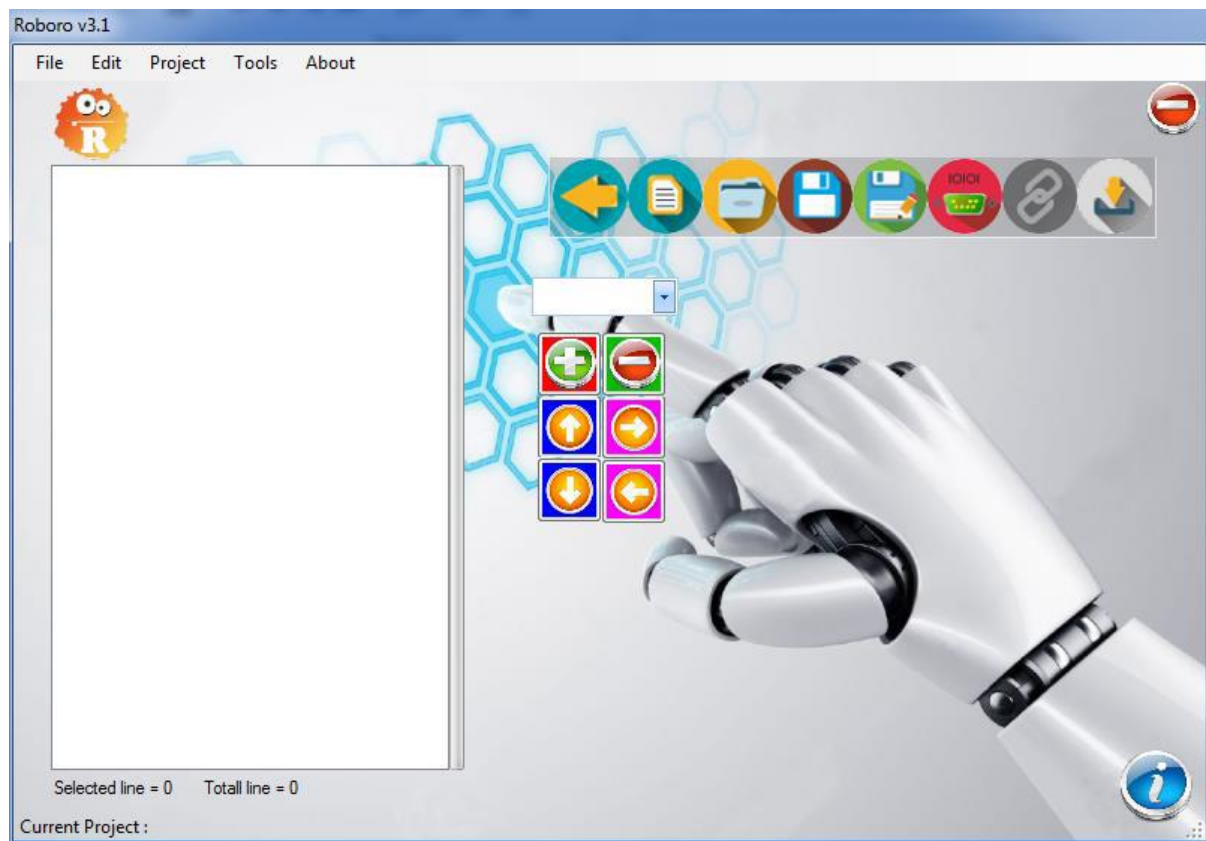


Roboro v3.1

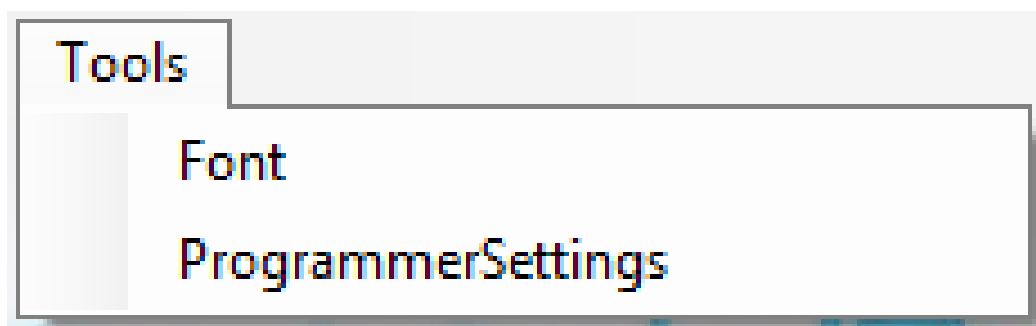
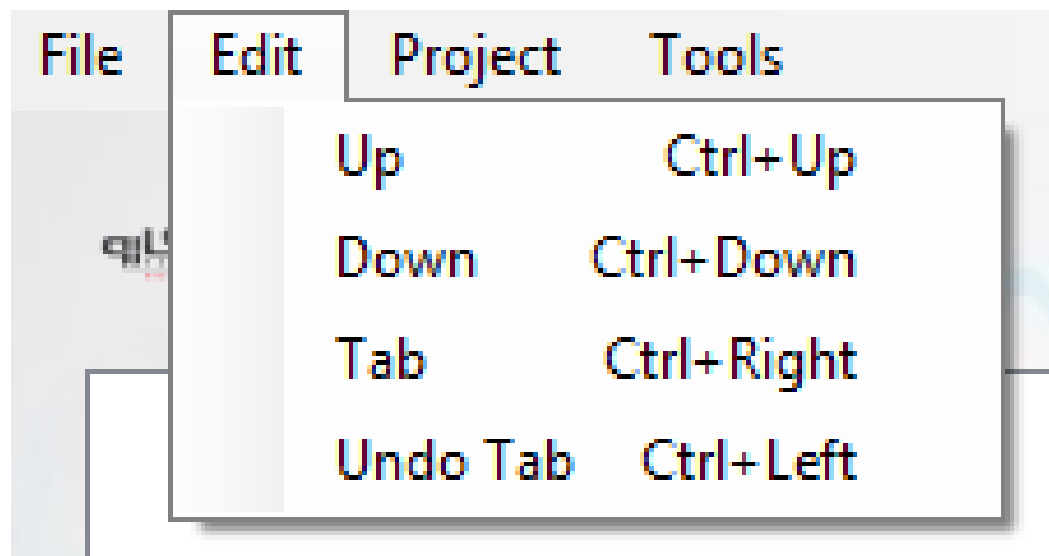
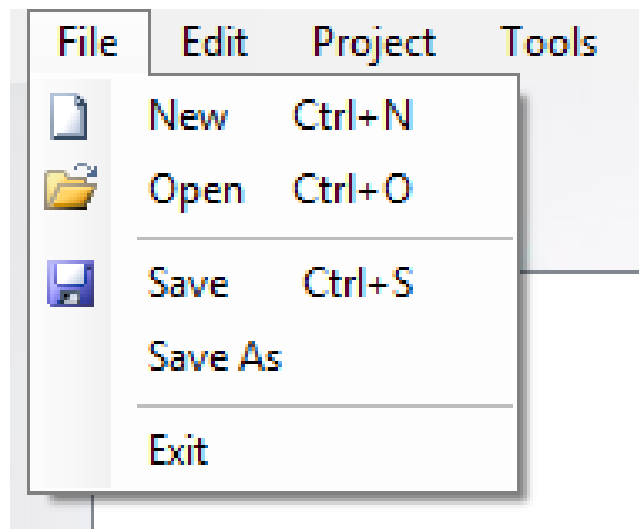


**Roboro v3**  
[www.NAD-CO.com](http://www.NAD-CO.com)



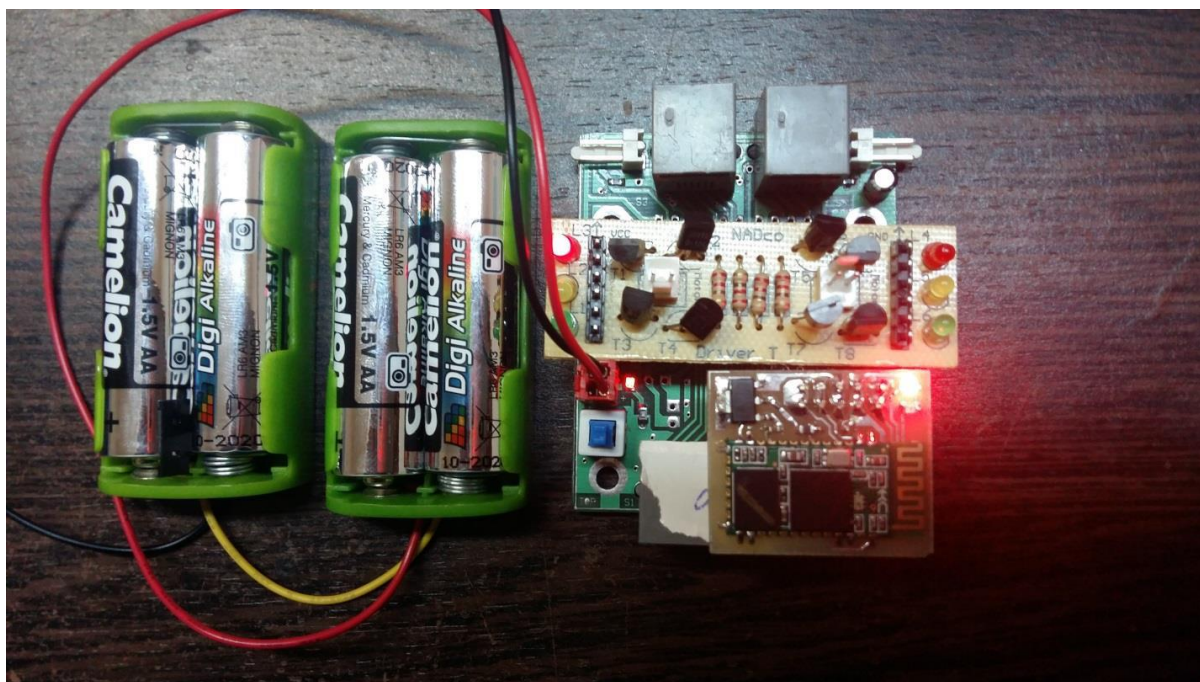


File Edit Project Tools

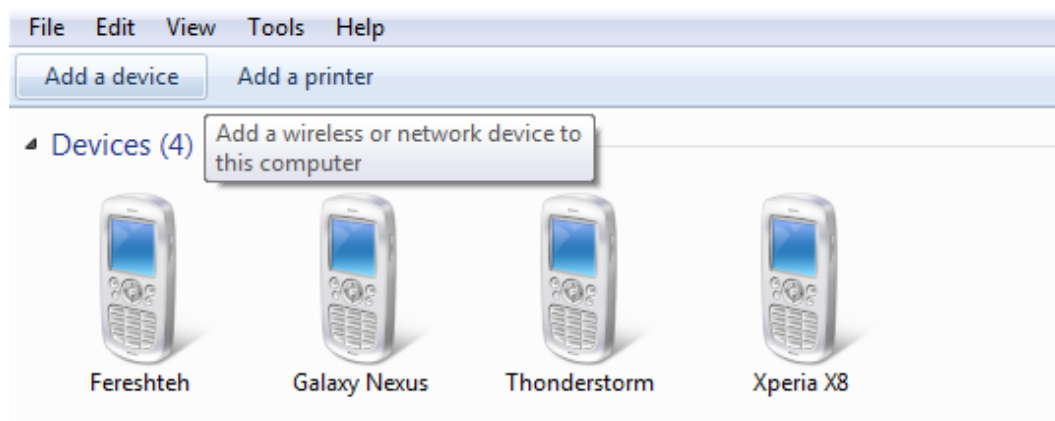
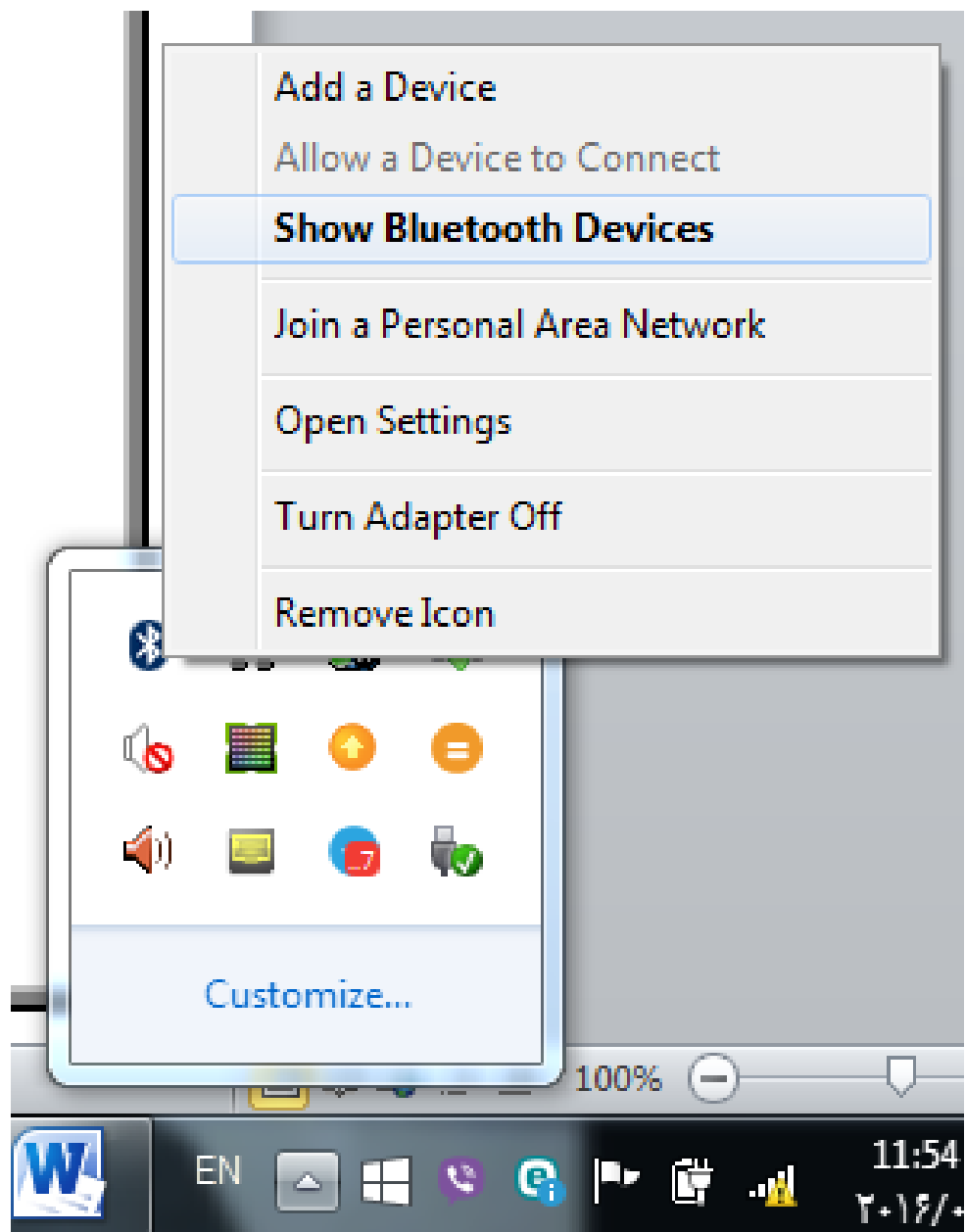




چگونگی اتصال ربات به لپ تاپ:









Add a device

### Select a pairing option



Create a pairing code for me

The device has a keypad.



Enter the device's pairing code

The device comes with a pairing code.  
Check for one on the device or in the device manual.



Pair without using a code

This type of device, such as a mouse, does not require a  
secure connection.

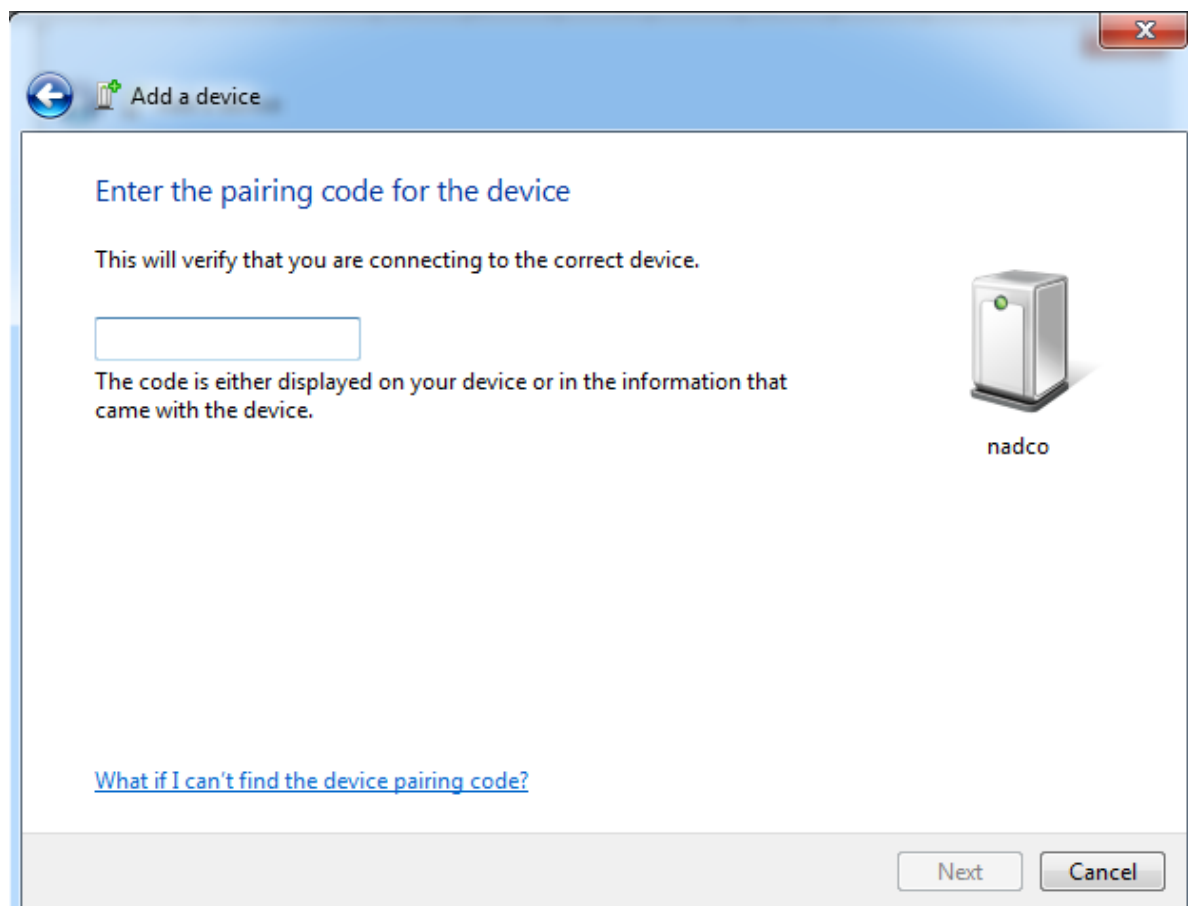


nadco

[How can I tell if my device has a pairing code?](#)

Next

Cancel



## Enter the pairing code for the device

This will verify that you are connecting to the correct device.

The code is either displayed on your device or in the information that came with the device.



