

# 3D shapes

1 Francesca put six shapes into a bag. Her friends each took a shape at random and described their shape.



What shape could each child be talking about?

(a)



8 edges and 5 vertices

(f)



My shape has 6 edges and 4 identical faces

(e)



My shape has 6 vertices and 6 faces

(b)



My shape has 6 identical faces

(c)



My shape has 6 identical faces

(d)



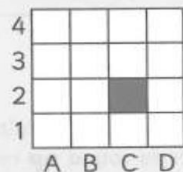
My shape has 8 faces and 12 vertices

# Angles, position and direction

## Remember

An **ordered pair** is a pair of letters or numbers that defines a **position** on a grid.

The square is at C2.



**Directions** can be given to move on a grid using words such as: **up, down, across, left** and **right**.

An **angle** is an amount of turn, measured in **degrees**. A quarter turn is also called a **right angle** and is equal to  $90^\circ$ . A complete turn is  $360^\circ$ .

## Vocabulary

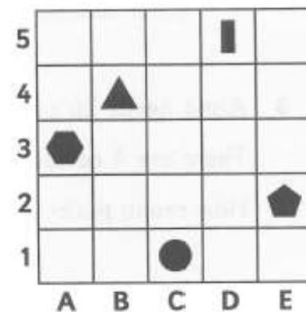
ordered pair, angle, right angle, degree

1 Here are some shapes on a square grid.

What is the position of the triangle? \_\_\_\_\_

What is the position of the rectangle? \_\_\_\_\_

What is the position of the circle? \_\_\_\_\_



Here is a route on a grid of squares. Complete the table to describe the route from start to finish.

Start	
1	down 1 square
2	left 3 squares
3	
4	
5	
6	
7	
Finish	

