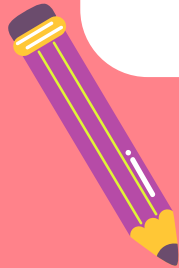
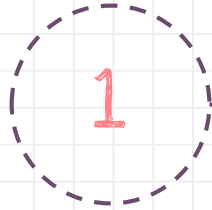
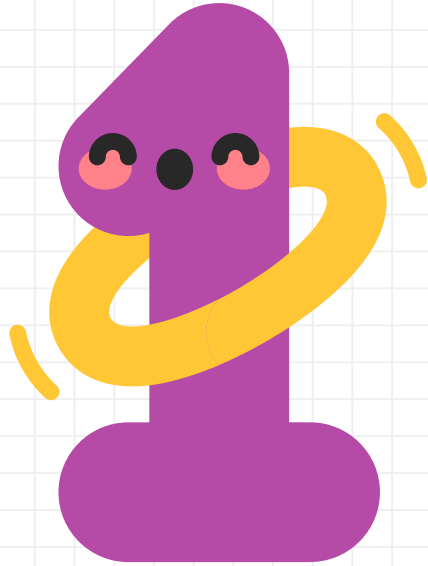


NUMBERS

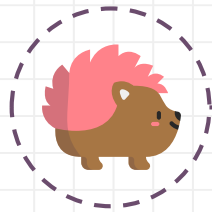


Here is **number one**

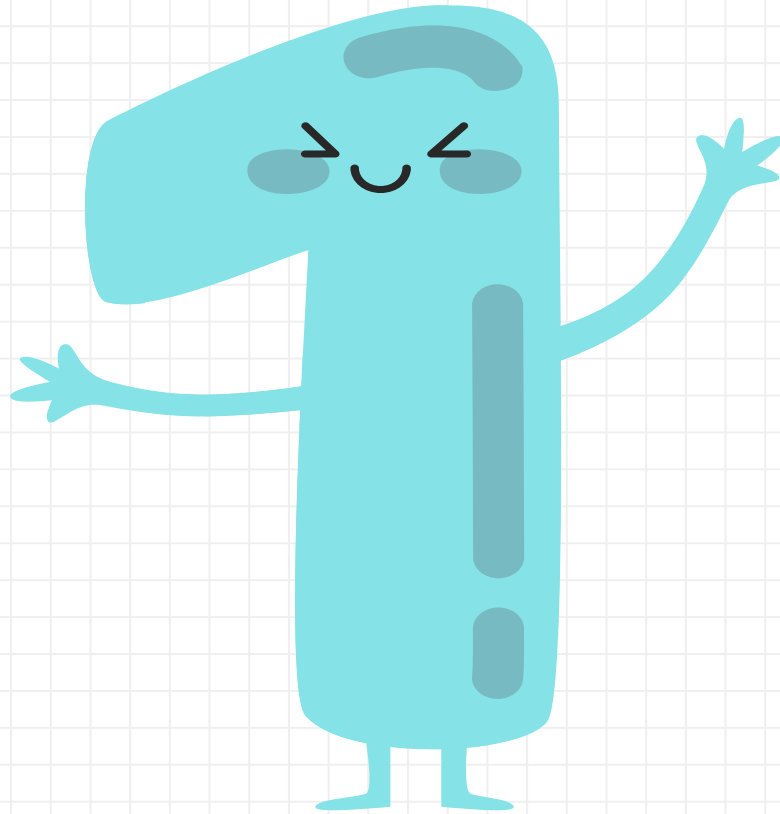


One hedgehog, **one** number!

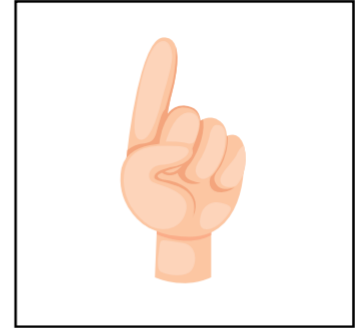
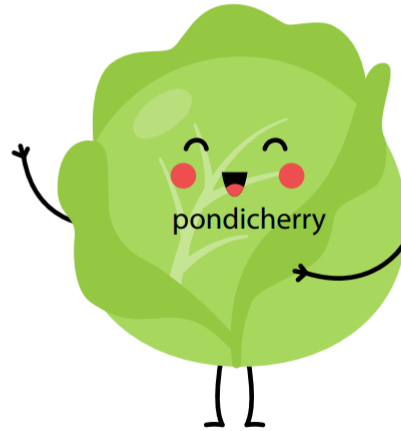
A straight line down and then we're done!
Number one it's lots of fun!



Number 1 :



Number 1 :



Let's trace and write :

1

1

1

1

1

1

1

1

1

1

1

1

1

1

1

1

1

1

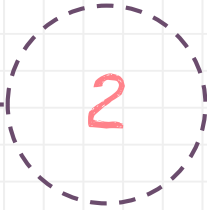
Blank handwriting practice lines consisting of a solid top line, a dotted middle line, and a solid bottom line.

Here is **number two**

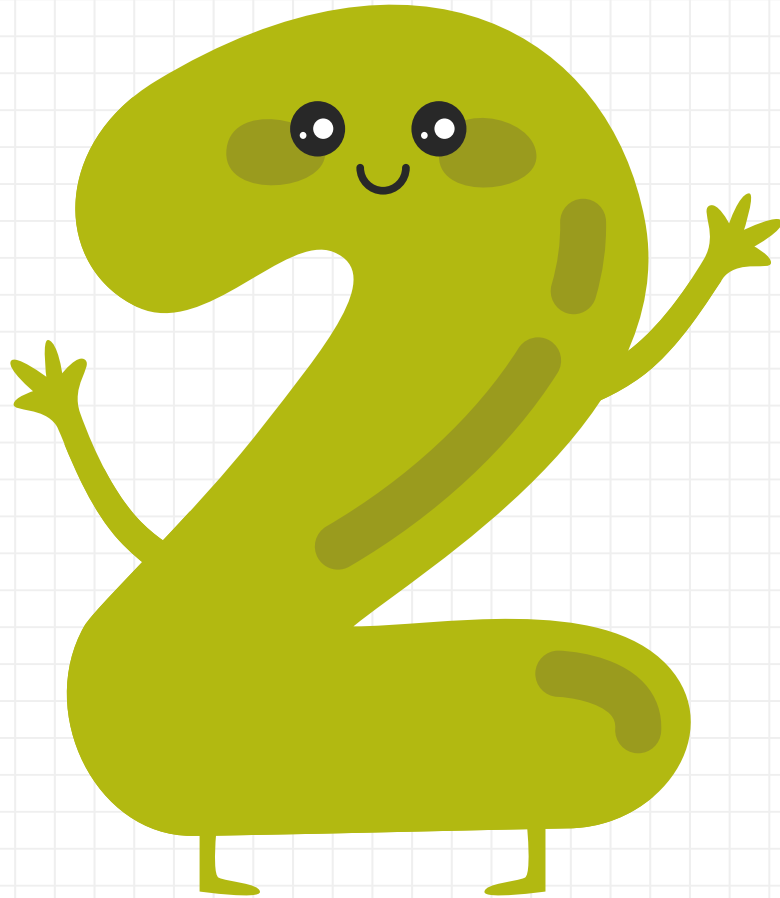


Two mouses, two numbers!

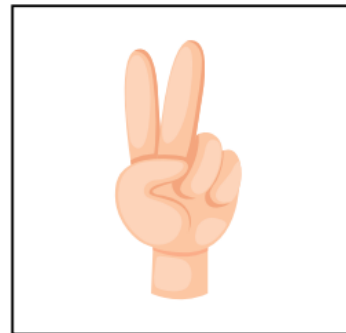
Around the back of the railway, the track makes “twoooo, twoooo, twooooooo”!



Number 2 :



Number 2 :



TWO

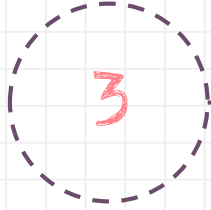
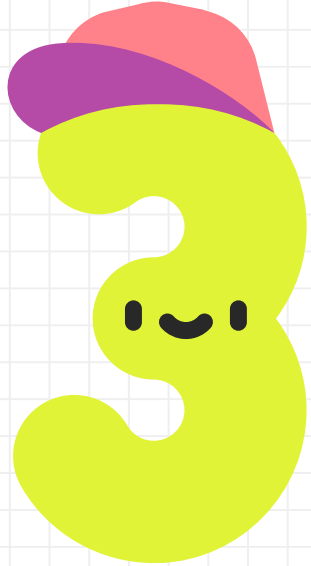
Let's trace and write :

2 2 2 2 2 2 2 2

2 2 2 2 2 2 2 2

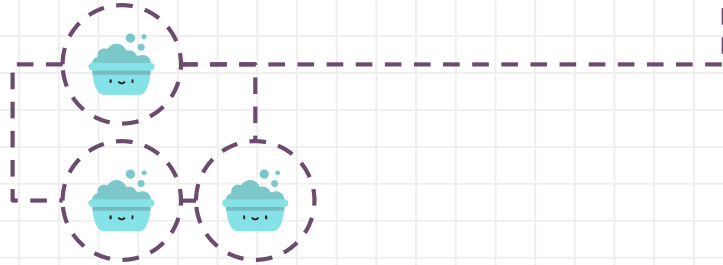
Blank handwriting lines for independent practice.

Here is **number three**



Three baths, three numbers!

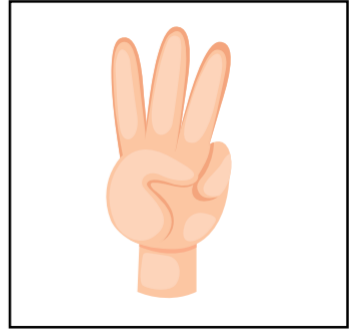
Around the tree, around the tree... This is
the way you make a three!



Number 3 :



Number 2 :



THREE

Let's trace and write :

3

3

3

3

3

3

3

3

3

3

3

3

3

3

3

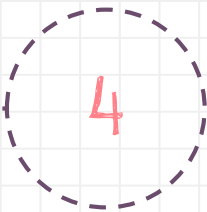
3

3

3

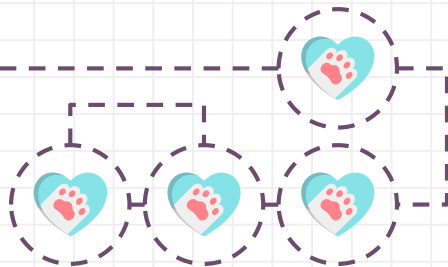
Blank handwriting lines for independent practice, consisting of a solid top line, a dashed middle line, and a solid bottom line.

Here is **number four**



Four paws, four numbers!

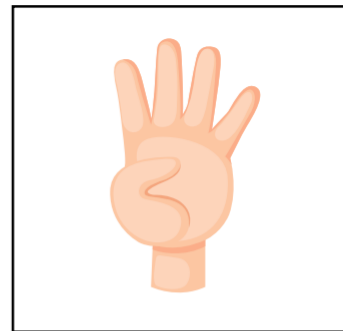
Down and across and down some more!
This is the way you make a four



Number 4 :



Number 4 :



FOUR

Let's trace and write :

4

4

4

4

4

4

4

4

4

4

4

4

4

4

4

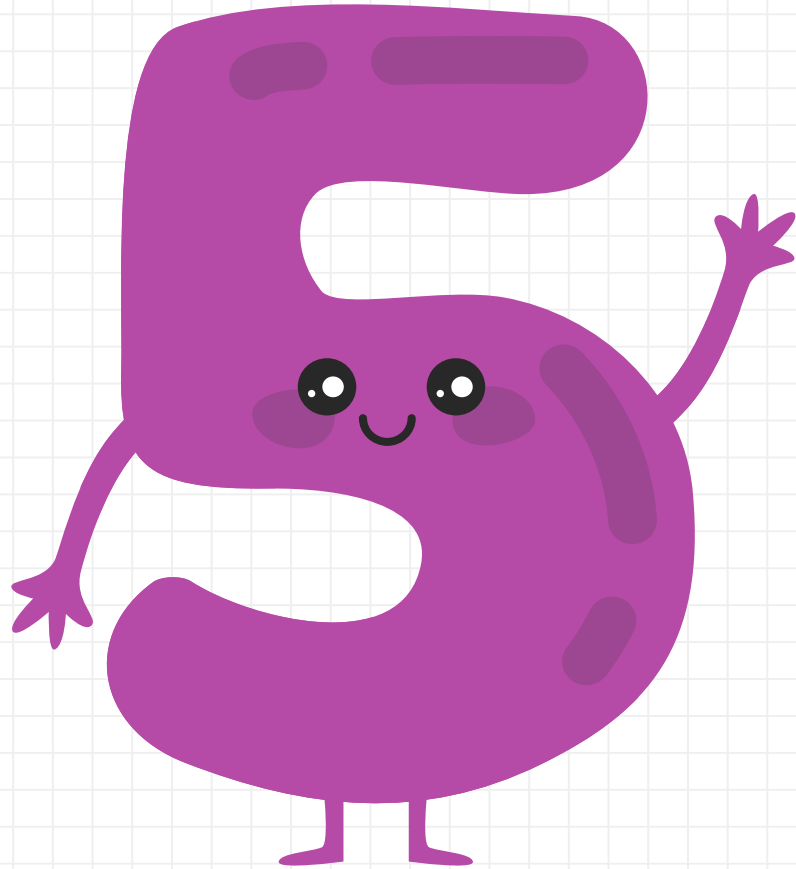
4

4

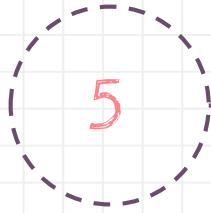
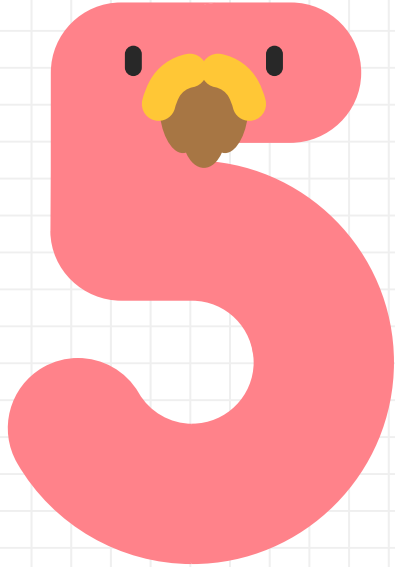
4

Blank handwriting practice lines consisting of a solid top line, a dotted middle line, and a solid bottom line.

Number 5 :

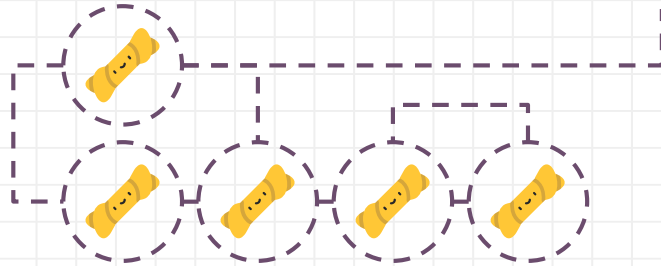


Here is **number five**

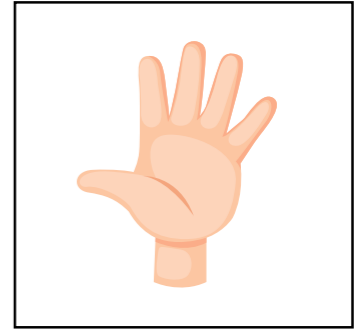


Five treats, five numbers!

Straight neck, big round tummy. Hat on,
five looks funny! :o



Number 5 :



Let's trace and write :

5

5

5

5

5

5

5

5

5

5

5

5

5

5

5

5

Blank handwriting practice lines consisting of a solid top blue line, a dashed orange middle line, and a solid bottom blue line.