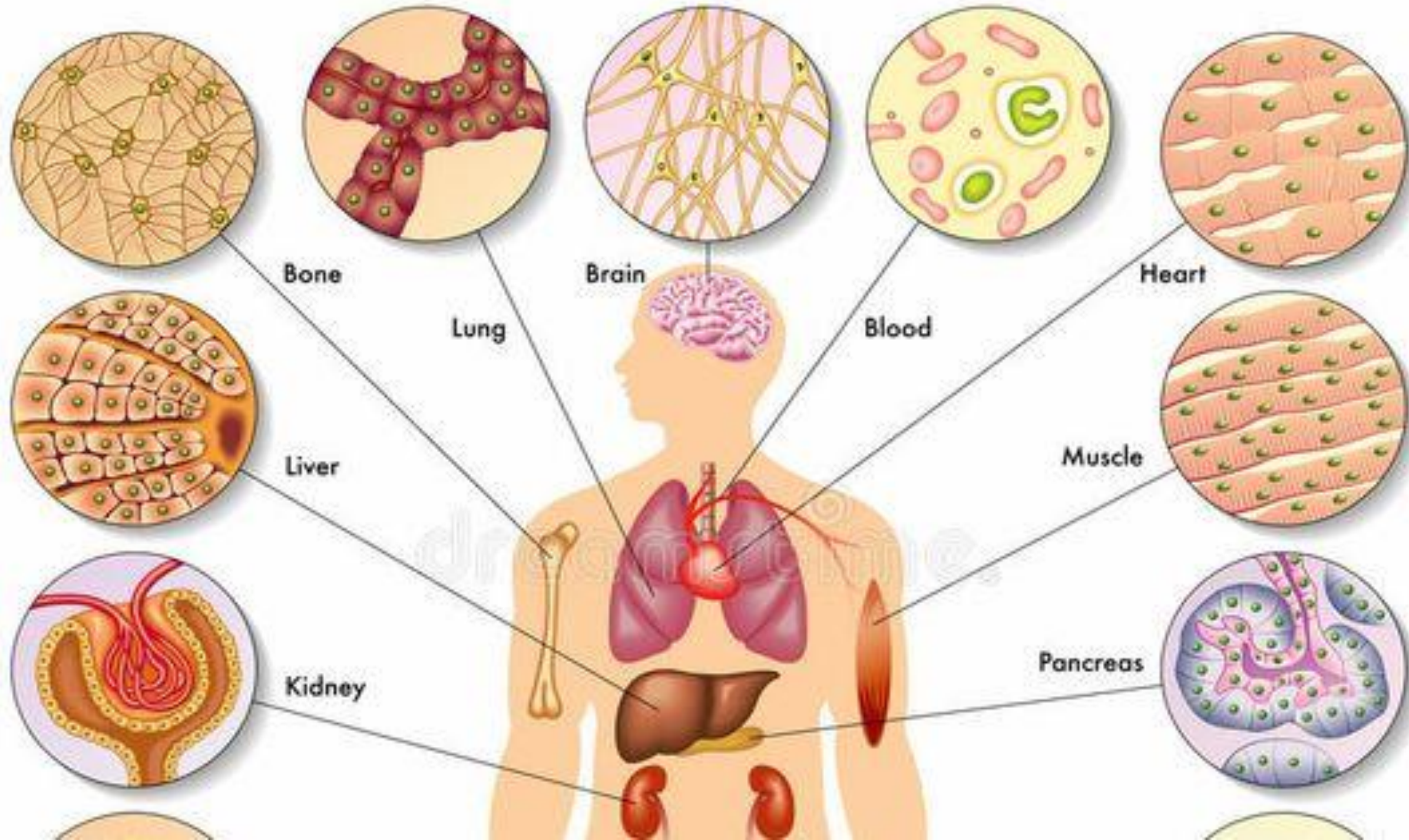
The background of the image is a microscopic view of various cells. The cells are mostly spherical or rounded in shape, with a prominent red nucleus and a blue cytoplasm. Some cells are in the process of dividing, showing multiple nuclei or budding structures. The overall appearance is that of a dense population of living cells, possibly from a tissue or a culture.

Cells are tiny building blocks that make up all living things. They are like the bricks that form a house, but much smaller. Every living organism, from plants and animals to us human, is made up of cells. These cells work together to keep living thing alive and functioning.





Cells have some common features. They are like little bags that hold everything a living thing needs to survive.

Each cell has a special “skin” called the cell membrane, which acts like a fence, keeping the insides safe and protected.

Inside the cell, there is a control center called the nucleus that holds the cells instructions.

Membrane

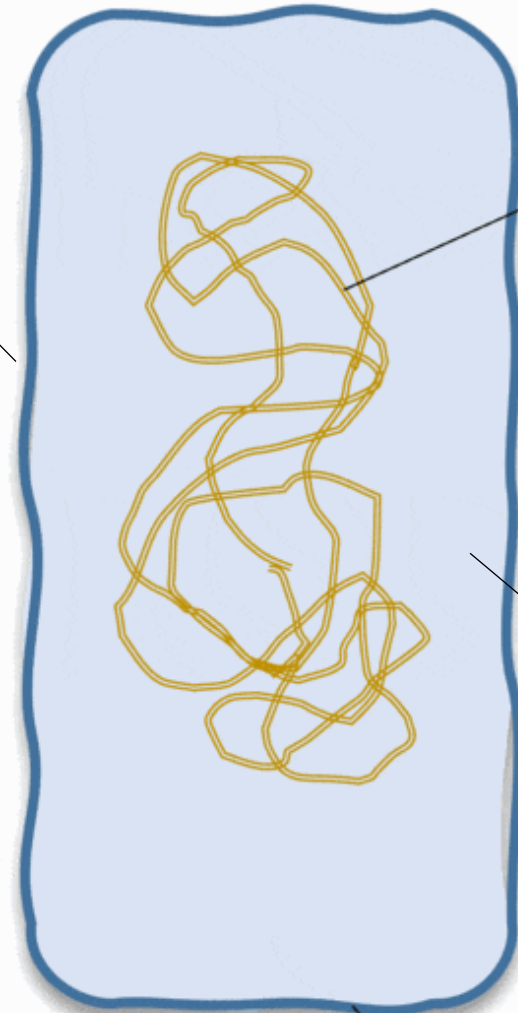
nucleoid

(bacterial chromosome)

cytoplasm



plasmid



bacterial cell

Plant cell

Bacterial cell

In plant cells, a rigid wall surrounds and protects the cell membrane. The wall is made of a woody substance called cellulose. A plant's cell walls make the plant hard enough to grow tall.

