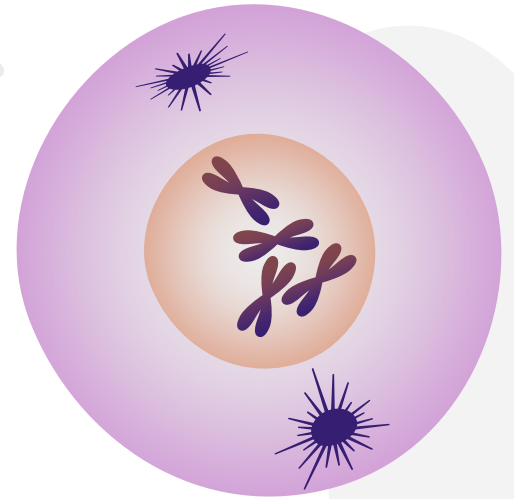
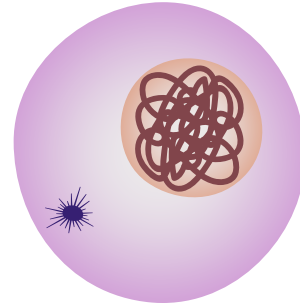
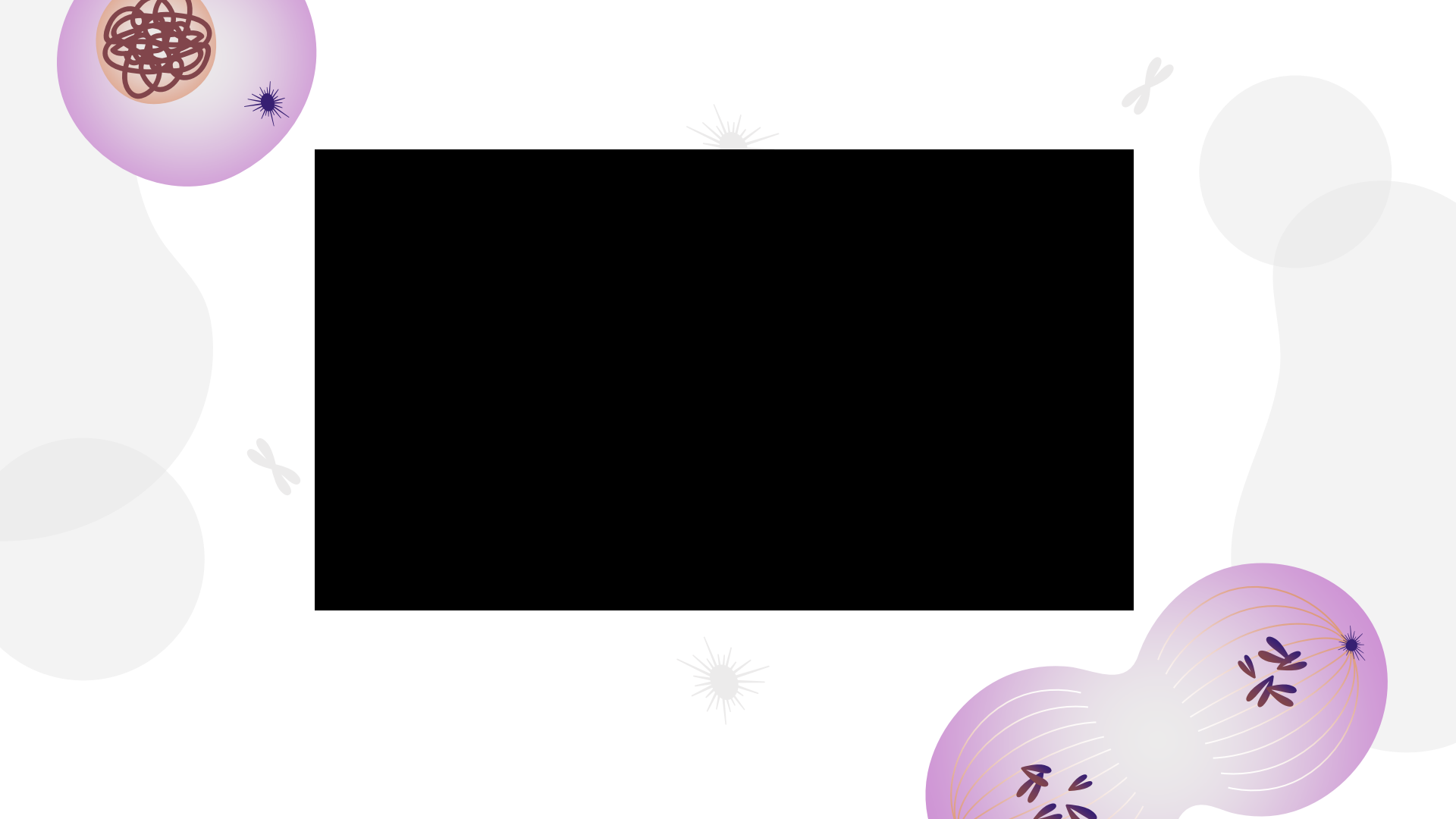
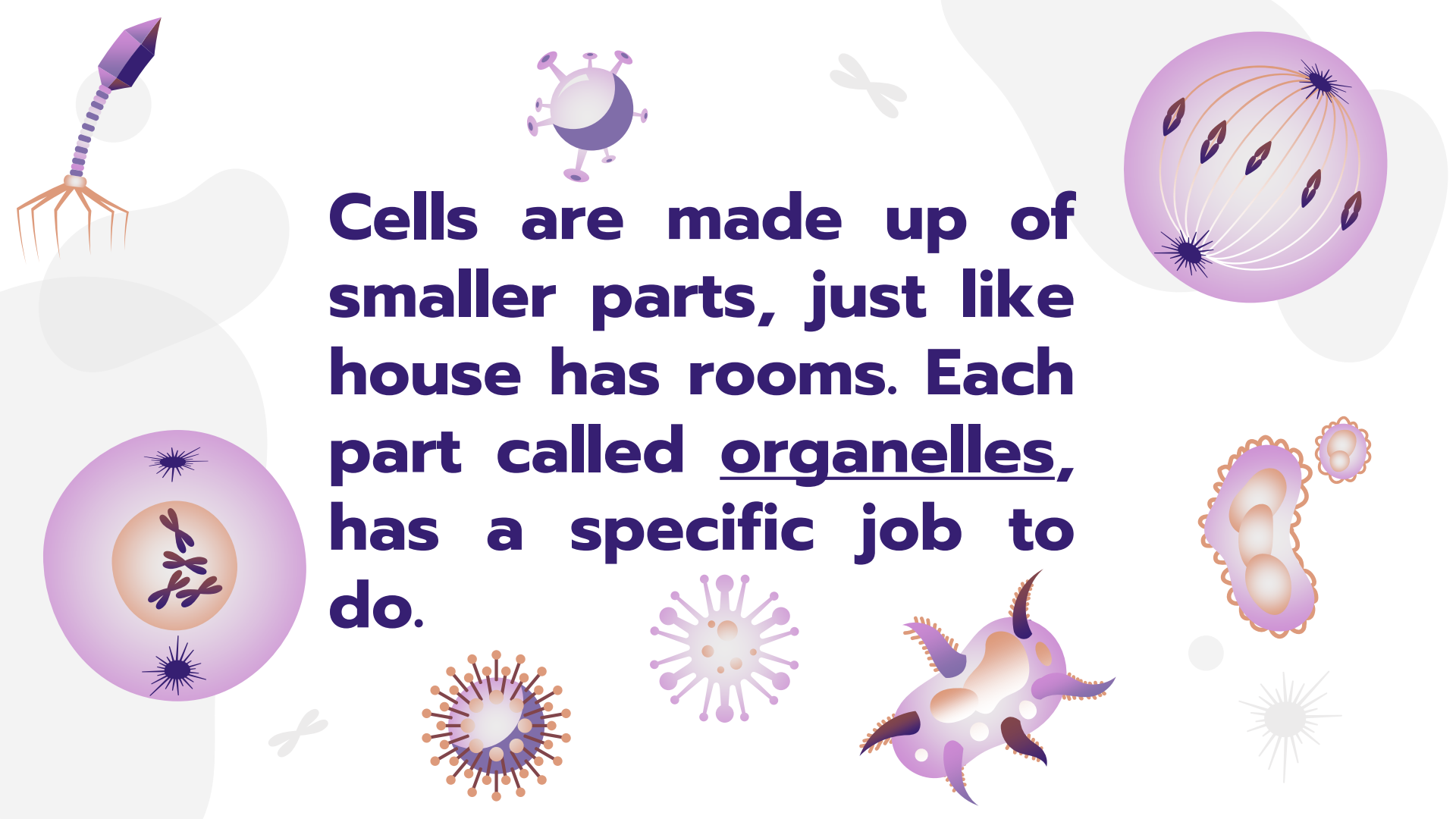


Parts of Cells and Their Functions





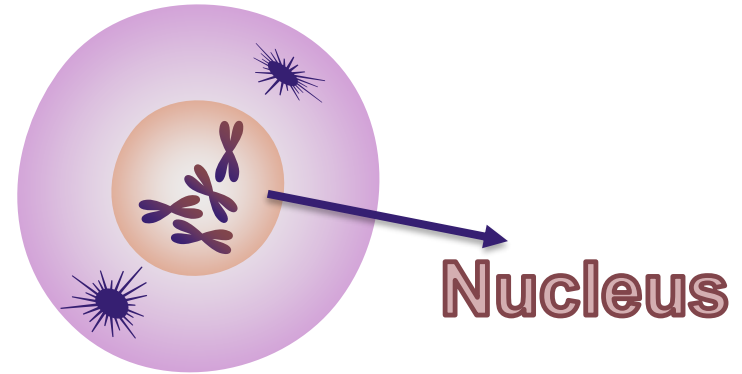


Cells are made up of smaller parts, just like house has rooms. Each part called organelles, has a specific job to do.

Nucleus

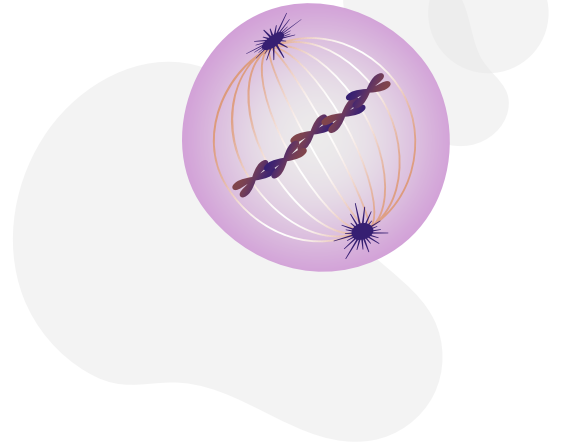
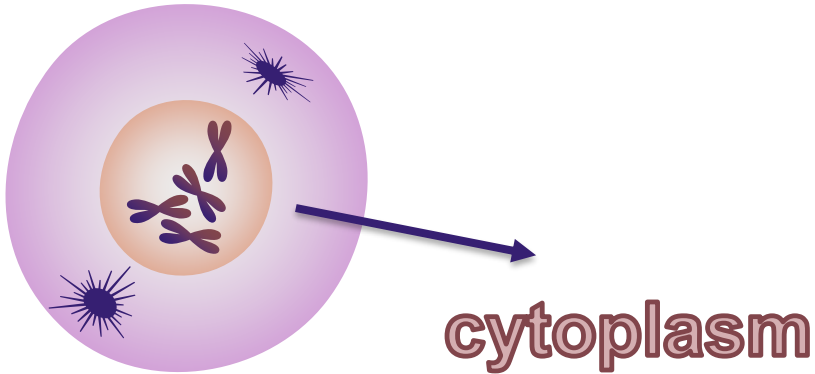
This is like a cell's control center or brain.

It holds the cell's instructions, which tell it what to do and how to grow.



Cytoplasm

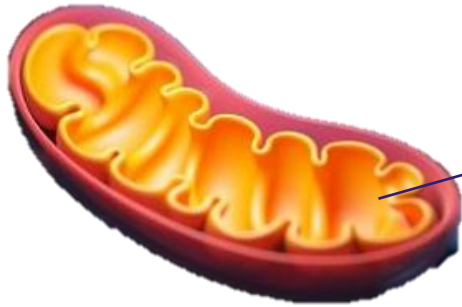
Its like a jelly filling inside the cell that holds all the other parts together.



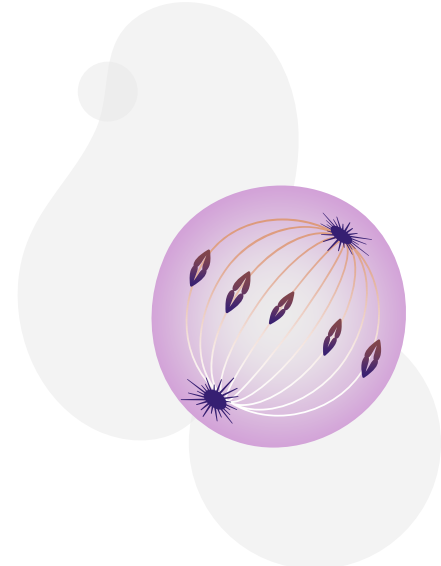
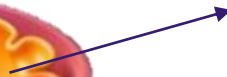
Mitochondria

1. Power house

2. Food \rightarrow energy \rightarrow cells use it to do their work.

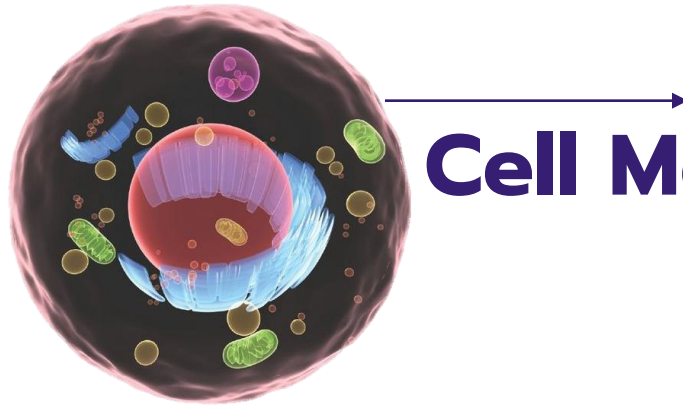


Mitochondria

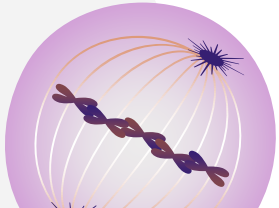


Cell Membrane

It's like a cell's protective fence. It controls what goes in and out of the cell.



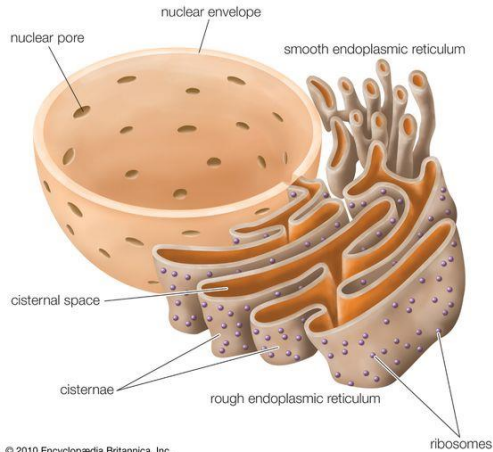
Cell Membrane



Endoplasmic Reticulum (E.R.)

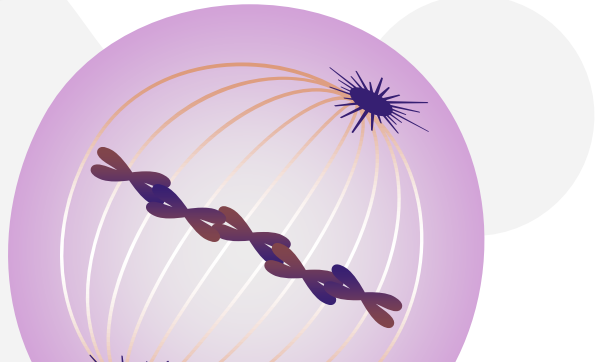
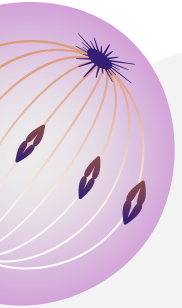
This is like a transport system inside the cell. It helps move things around.

Endoplasmic reticulum



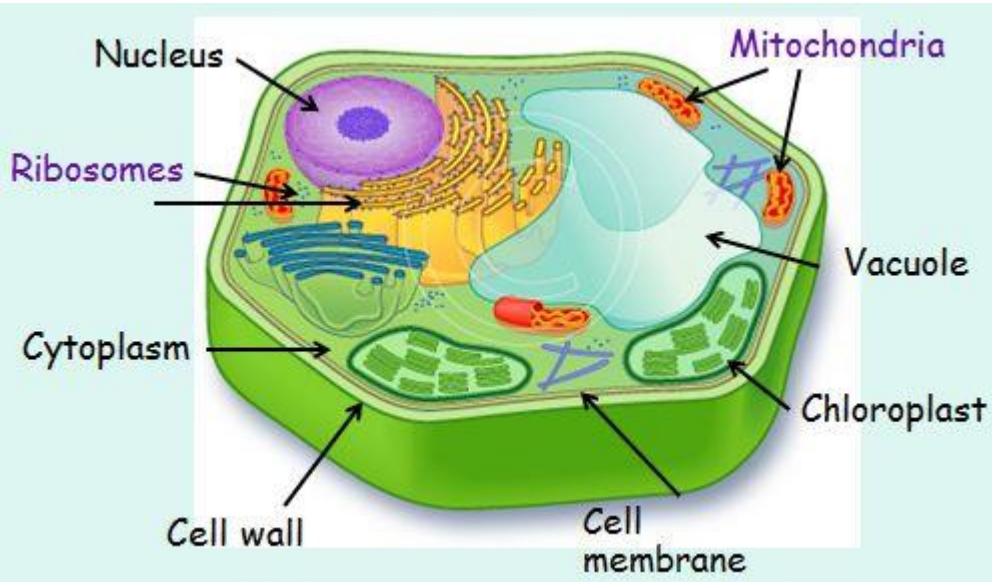
Golgi Apparatus

This part packages and sends out proteins and other materials from the cell.



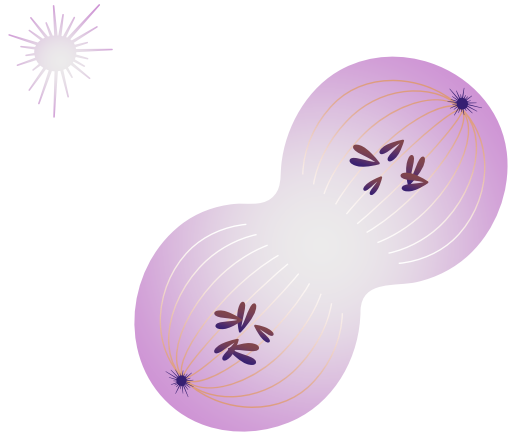
Vacuole

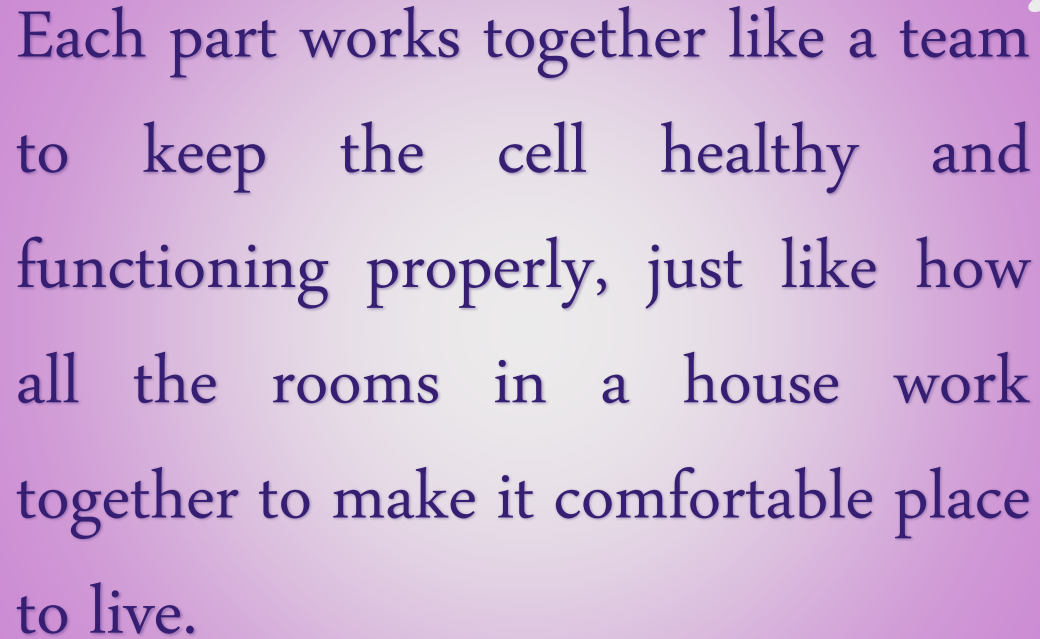
It is like a storage space in the cell.
It holds water, nutrients and waste.



Chloroplast

These help plants make food using sunlight.
This process is called photosynthesis.



A purple monitor graphic with a stand, containing text about cell components. The monitor is centered on the page. The text inside the monitor reads: "Each part works together like a team to keep the cell healthy and functioning properly, just like how all the rooms in a house work together to make it comfortable place to live." There are decorative elements around the monitor: a grey circle to the left, a grey circle to the right, and a grey starburst to the left of the monitor's screen.

Each part works together like a team to keep the cell healthy and functioning properly, just like how all the rooms in a house work together to make it comfortable place to live.

Conclusion