











HELLO

AND

WELCOME



Science project

SANDRA HARO

An underwater photograph of a coral reef. In the foreground, a diver is partially visible, wearing a blue mask and a silver scuba tank. The reef is covered in various types of coral, including branching and table corals. The water is clear and blue. In the background, another diver can be seen. A white rectangular object, possibly a piece of equipment or a marker, is visible on the reef floor. A yellow line is stretched across the reef. The word "Oceanology" is overlaid in a large, bold, yellow font on a blue rounded rectangle in the center of the image.

Oceanology

- **The Southern Ocean surrounds Antarctica, extending from the Antarctic coastline to about 60 degrees south latitude.**



Antarctica



Iceberg



It's the smallest and coldest ocean, characterized by strong winds, icebergs, and extreme conditions.





Penguin

Whale



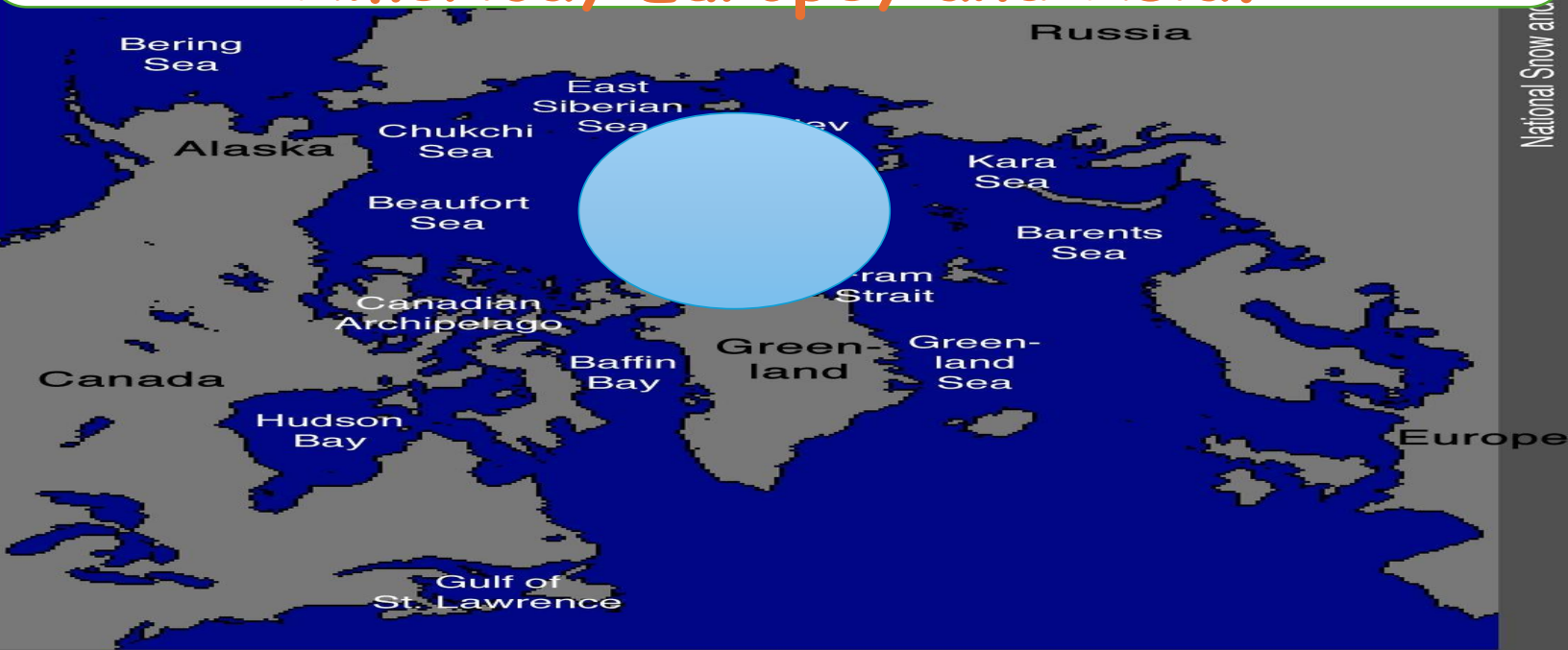
Seal



- **Important Animals: The Southern Ocean is rich in marine life, including various species of seals, penguins, whales (like the blue whale).**



The Arctic Ocean is located around the North Pole, bordered by northern North America, Europe, and Asia.



Sea ice



- It's the smallest and shallowest ocean, covered by sea ice formuch of the year. The Arctic is experiencing rapid climate change, resulting in shrinking icecover.

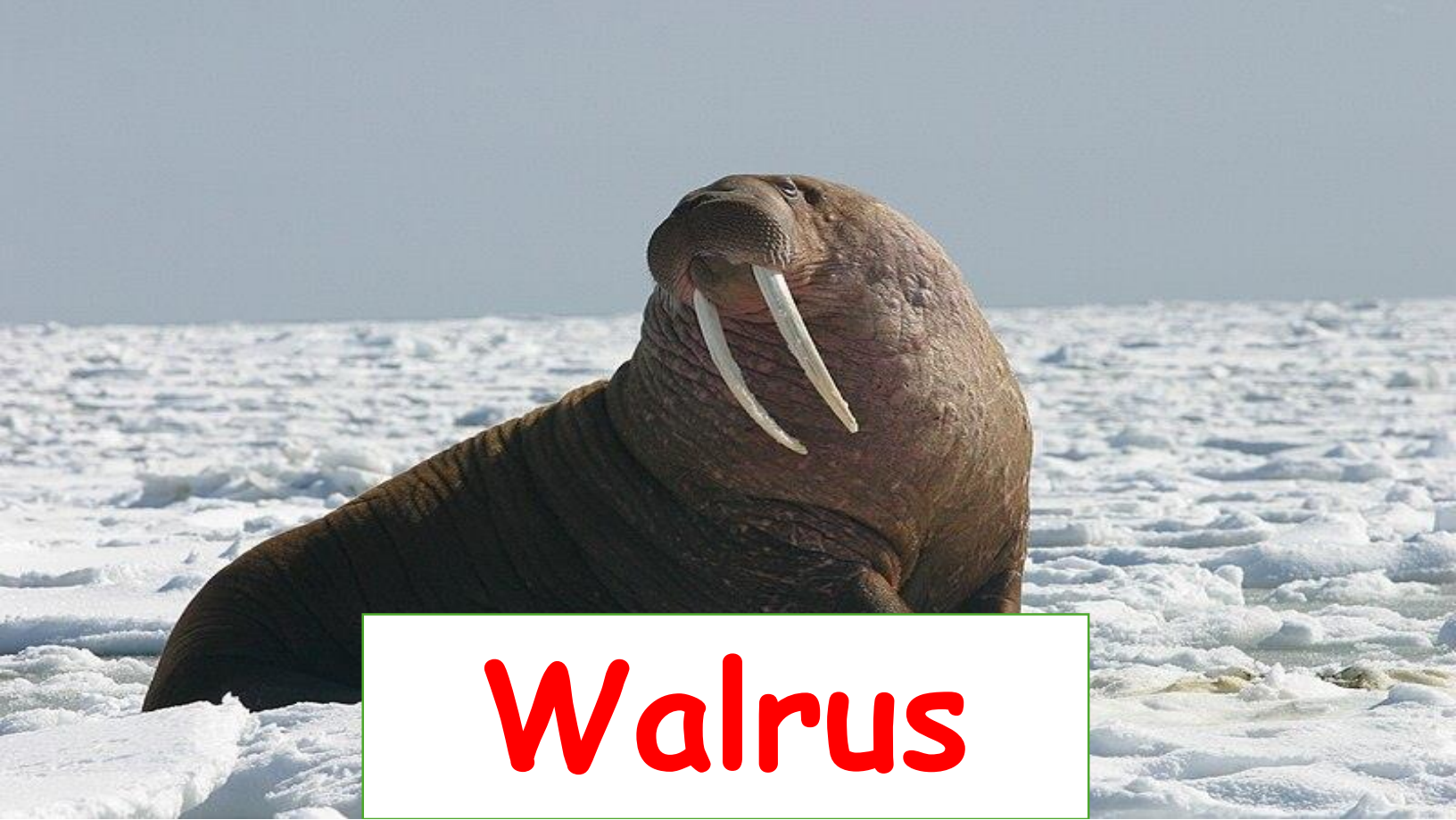




Polar bear



Sea bird



Walrus



- **Important Animals: The Arctic Ocean is home to polar bears, walruses, seals, and various species of whales and seabirds that are adapted to cold environments. It also supports unique ecosystems that exist around the sea ice.**