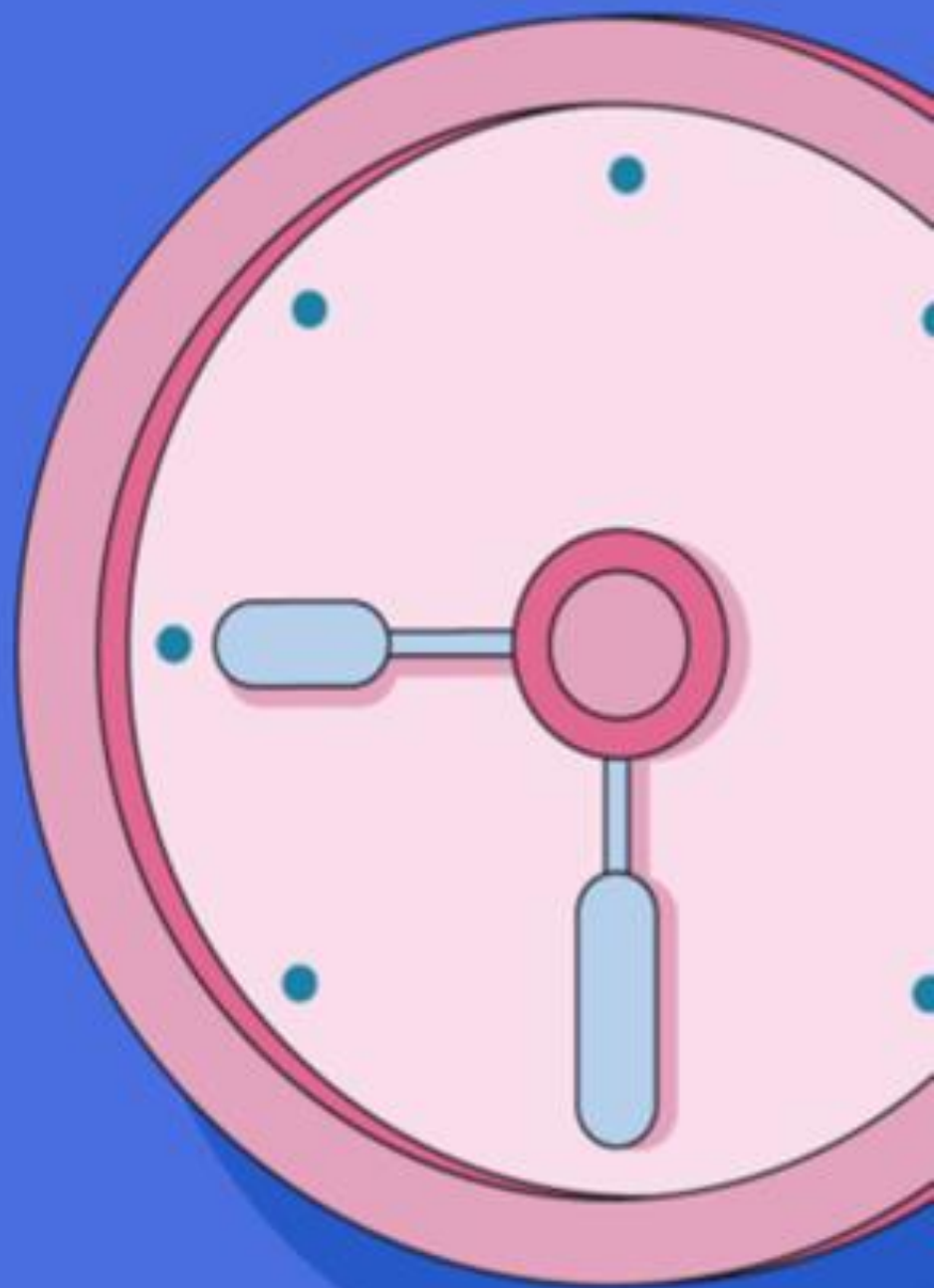




WELCOME

A colorful graphic where the word "WELCOME" is spelled out using seven circular tags. Each tag is a different color and has a white outline. The tags are hanging from a thin, vertical line of the same color as the tag. The colors of the tags are: W (pink), E (red), L (orange), C (purple), O (green), M (teal), and E (blue).

SIMPLE
PRESENT
TENSE





E-LEARNINGENGLISH
ONLINE CLASSES & SELF-STUDY

Present Simple Story



WE USE PRESENT SIMPLE TO TALK ABOUT.

facts



I **live** in Poland.

habits and routines



They **swim** every day.

feeling and emotions



They **like** pizza.

general truth



Sunday **comes** after Saturday.

Simple present positive form

I/you/we/they+
base verb

she/he/it+
verb+s/es/ies

INFINITIVE

play
work

watch
miss

study
try

do
go

have

HE/SHE/IT

plays
works

watches
misses

studies
tries

does
goes

has

Simple present negative form

I/you/we/they+
don't+ base verb

she/he/it+ **doesn't**+
base verb

| | | | |
|----------|------|---|---------------|
| NEGATIVE | I | } | do not work |
| | You | | don't work |
| | He | } | does not work |
| | She | | doesn't work |
| | It | | |
| | We | } | do not work |
| | They | | don't work |

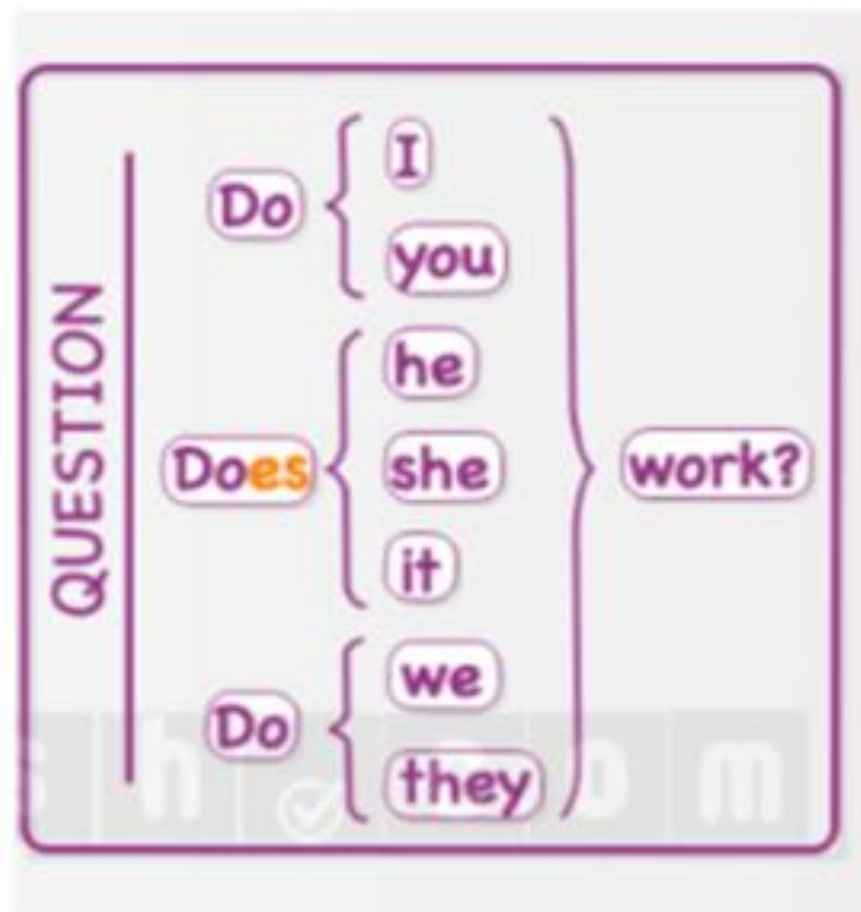
Simple present question forms

Wh questions+ do+
I/you/we/they+ base verb?

Where do you go?
I go to the cinema.

Wh questions+ does+ she/he/it+
base verb?

What does she do?
She washes the dishes.



**PRESENT
CONTINUOUS**

+TEST

PRESENT CONTINUOUS

| Pronoun | Statement | Negation | Question |
|-----------|-----------------------------|---------------------------------|------------------------------|
| I | I <u>am</u> working | I <u>am not</u> working | <u>Am</u> I working? |
| You | You <u>are</u> working | You <u>are not</u> working | <u>Are</u> you working? |
| He/She/It | He/She/It <u>is</u> working | He/She/It <u>is not</u> working | <u>Is</u> he/she/it working? |
| We | We <u>are</u> working | We <u>are not</u> working | <u>Are</u> we working? |
| They | They <u>are</u> working | They <u>are not</u> working | <u>Are</u> they working? |

2 Complete the sentences with the present simple or continuous form of the verbs in brackets.

- 1 I get (get) home at five o'clock every day.
- 2 Mum is working (work) late this week.
- 3 Look at Dan. He isn't concentrating (not concentrate).
- 4 Are you doing (do) anything interesting next weekend?
- 5 She plays (play) the guitar and the piano.
- 6 He always goes (go) swimming on Saturdays.

Present simple or present continuous?

3 Look at Exercises 1 and 2. Are these time words and phrases used with the present simple (PS) or present continuous (PC)?

at the moment / right now *PC*

never, sometimes, always **ps**

every day/week/year **ps**

this month/term/week

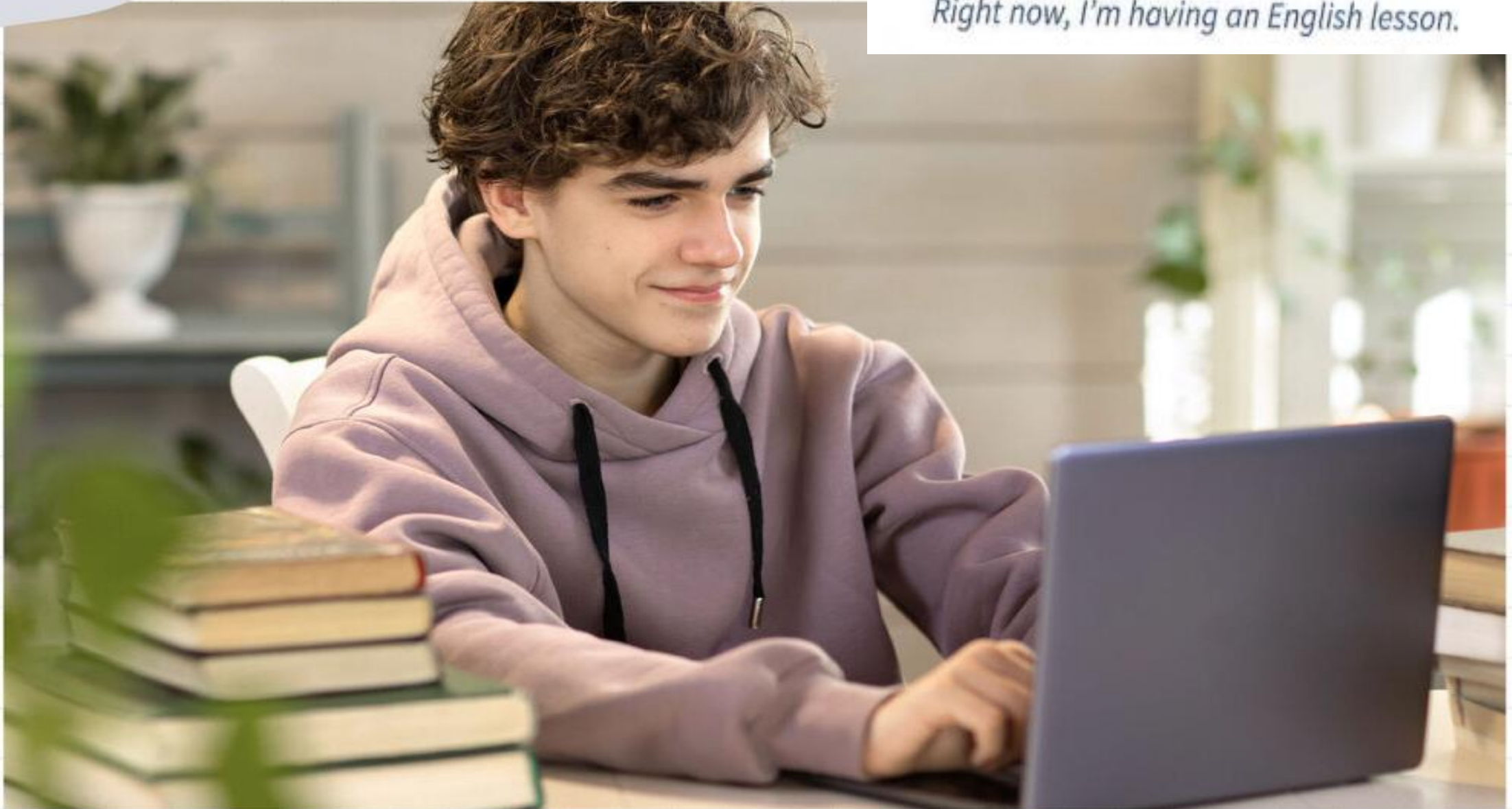
later, tomorrow, tonight

on Saturdays, at weekends

next week/weekend/month

4 Write six sentences about you. Use the time words and phrases in Exercise 3.

Right now, I'm having an English lesson.





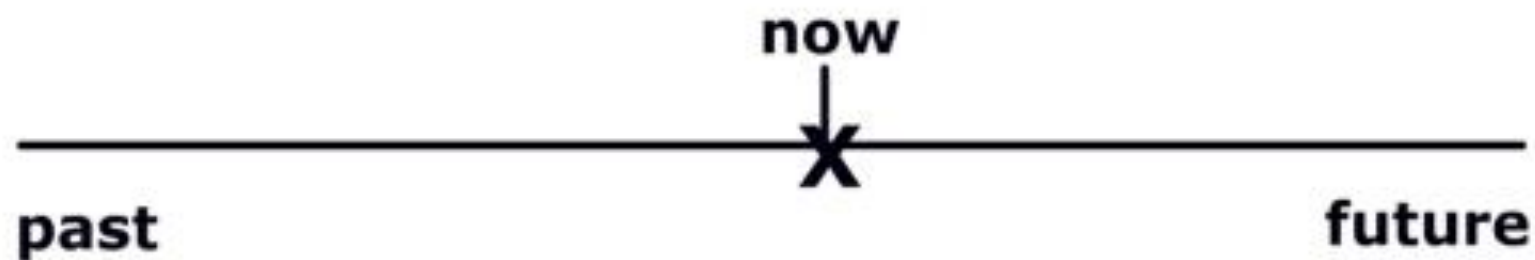
Present Simple

VS

Present Continuous

Present Simple 1

I live here.



Present Continuous

I'm reading a book.



PRESENT SIMPLE TENSE vs PRESENT CONTINUOUS TENSE

Present Simple

General truths.

It rarely rains in the desert.

Present habits.

Marsha goes to dance club every Thursday.

Timetable events.

The plane to London takes off at 6:30 a.m.

Permanent states.

He works at a hotel.

Present Continuous

Actions happening now.

She is reading a newspaper upstairs.

Annoying habits (+ always).

She is always singing in the shower.

Future arrangements.

She is getting married on 3 November.

Temporary states.

She is working at the hotel until next week.

5 Read the information about the verbs. Check the meaning of the verbs you don't know.

We don't use some verbs in continuous forms. These verbs are called **stative verbs** and include: *believe, hate, know, like, love, mean, need, own, prefer, understand, want.*

I don't understand this question.

NOT *I'm not understanding this question.*

Stative Verbs

are also called **state** or **state-of-being verbs** and they involve



sense



emotions



condition



possession



thought

6 Complete the sentences with the positive or negative form of the verbs in Exercise 5. Sometimes more than one answer is possible.

0 My uncle owns three cars.

1 Ruby's very friendly. We really _____ her.

2 I _____ how old he is. He looks about 14.

3 What _____ this word _____?

4 I'm feeling miserable today. I _____ cold weather.

5 You're speaking too quickly and I _____ you.

7 Choose the correct form of the verbs.



- 1 We *have* / *'re having* problems with the computers at the moment.
- 2 *I need* / *'m needing* some new shoes.
- 3 I *write* / *'m writing* to you about a trip we are planning in November.
- 4 Tonight she *goes* / *'s going* to the cinema with some friends.
- 5 This term I *have* / *'m having* some extra maths lessons.
- 6 I *never forget* / *'m never forgetting* my homework.



Prefix



a word part added in front of
a base word to change the meaning

| Prefix | Meaning | Examples |
|--------|---------------------|-----------|
| re- | again | rewrite |
| un- | not | unkind |
| pre- | before | premade |
| dis- | not, opposite of | dishonest |
| im- | not, opposite of | impolite |
| non- | not | nonsense |
| mis- | wrong, bad | misbehave |

What is prefix?

1 Read the examples. Then write the opposites of the adjectives, 1-12.



I'm finding coding **impossible** at the moment!

Lucas's room is always really **untidy**.

I'm quite **independent**.

1 kind **2** friendly **3** patient

4 expensive **5** known **6** polite

7 visible **8** healthy **9** well

10 fair **11** lucky **12** correct

1. UNKIND

2. UNFRIENDLY

3. IMPATIENT

4. INEXPENSIVE

5. UNKNOWN

6. IMPOLITE

7. INVISIBLE

8. UNHEALTHY

9. UNWELL

10. UNFAIR

11. UNLUCKY

12. INCORRECT

2 Agree with these sentences. Use an adjective from Exercise 1 or its opposite.

- 0 A:** I didn't recognise any of the actors in that film.
B: They were all unknown, I think.
- 1 A:** Dad never waits for me!
B: You're right. He's very impatient.
- 2 A:** Mum's still in bed!
B: I know. She's feeling really unwell.
- 3 A:** It's important to wear bright clothing on a bike at night.
B: Yes, you need to be visible to drivers.
- 4 A:** We have to be home at 10.30. That's so early!
B: Yeah. It's really unfair.
- 5 A:** I can't believe you found your phone!
B: I know. I'm so lucky.
- 6 A:** The last question in the homework was hard!
B: Yes! I got the same answer as you, but Mrs Thomas said it was incorrect.