



a

a great deal of

an

a few

a large number of

a lot of

Quantifiers

a number of

no

any

many

a little

plenty of

much

several of

lots of

none

MUCH

+ uncountable noun

I don't have much milk.

There isn't much left.

MANY

+ countable noun

I don't have many friends.

There aren't too many people here.

A LOT OF

+ uncountable noun
+ plural countable noun

I have a lot of milk in the refrigerator.

There are a lot of people outside.

many, much + negative sentences, questions

a lot of + positive sentences

many, much can also be used in positive sentences - but it's less common

GRAMMAR

*some/any, much/many, a lot of,
a few / a little*

1 Read the examples. Then complete the rules with *some* or *any*.

- 1** *Some* people drive cars.
- 2** The Uno doesn't use *any* petrol.
- 3** Have you got *any* ideas?

We use:

- a** *some* before nouns in positive sentences.
- b** *any* before nouns in negative sentences and in questions.

2 Complete the sentences with *some* or *any*.

1 Do you need **any** help with the rubbish?

2 I like **some** graffiti but not all of it.

3 There's **some** heavy traffic on the motorway.

4 Is there **any** information about bus times?

5 There isn't **any** electricity at the moment.
I think there's a power cut.

6 I've got **some** rubbish here. Where can I put it?

3 Read the examples. Then complete the rules with the **words**.



- 1 Beijing is like **a lot of** big cities around the world.
- 2 The city **has** **a lot of** traffic.
- 3 **A lot of** people ride scooters.
- 4 Scooters don't need **much** petrol.
- 5 When Ann was young, she only had **a few** toys.
- 6 **Many** people don't have access to electricity.
- 7 Ann's torch only produced **a little** light.

- a We use *many*, **much**..... and **A lot of**..... to talk about large amounts.
- b We don't usually use *much* or *many* in positive sentences: *There is ~~much~~ a lot of time.*
- c We use **A few**..... and **A little**..... to talk about small amounts.
- d We don't use *a few* or *a little* in negative sentences: *He hasn't got ~~a little~~ much money.*

4. Look at the underlined nouns in the examples in exercise 3. Are they countable or uncountable?

5 Complete the table with *a lot of*, *a little* and *much*.

Countable nouns	Uncountable nouns
There aren't many cities.	There isn't ¹ much water.
There are a lot of scooters.	There's ² A lot of traffic.
There are a few people.	There's ³ A little petrol.

COUNTABLE NOUNS



UNCOUNTABLE NOUNS



6 Choose the correct words.



1 **A:** Do you like living in the country?

B: Mostly. There are *a few* / *a little* bad things.
There isn't *many* / *much* entertainment.

2 **A:** I got *much* / *a lot of* tips from my aunt about visiting the UK.

B: My brother gave me *a little* / *a few* information about *a* / *some* good things to see in the UK.

3 **A:** Have you got *a few* / *some* minutes? I'm doing a questionnaire on pollution.

B: I'm sorry. I haven't got *much* / *many* time. Are there *many* / *much* questions?

4 **A:** Do you have *some* / *any* problems with crime?

B: There's *a little* / *a few* graffiti, but not really.



7 Think about your perfect place to live and complete the sentences. Compare your ideas.

- 1** My perfect place to live has got *a lot of / a few* ...
- 2** There are *some / a lot of* ...
- 3** There aren't *any / a lot of* ...
- 4** It hasn't got *much / many* ...
- 5** There's only *a little* ...

COMPOUND NOUNS



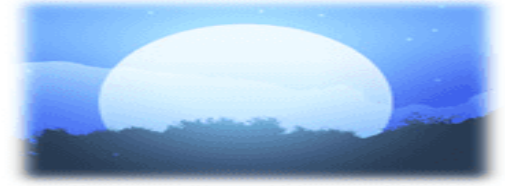
Moon

+



Light

=



Moonlight



Key

+



Hole

=



Keyhole



Pan

+



Cake

=



Pancake

VOCABULARY

Compounds: noun + noun

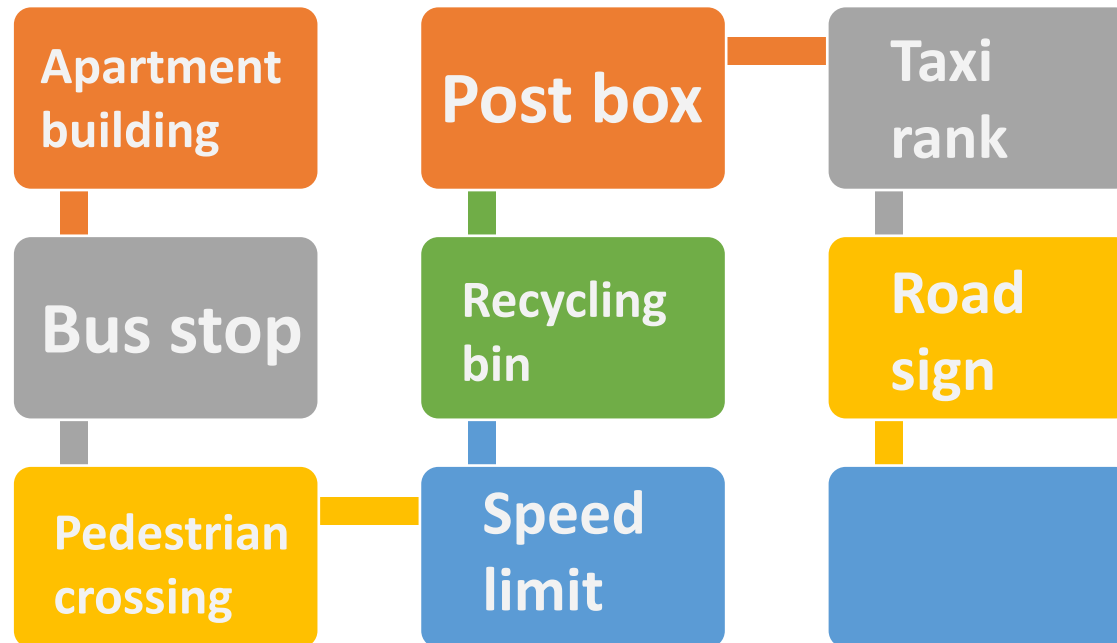
1 Make a word from A and B for each photo 1-8 below.

EP

A apartment bus pedestrian post
recycling speed taxi road

B bin box building crossing
limit rank sign stop

1 apartment building



2 Complete the sentences with the correct compound from Exercise 1.

- 1 There's a lot of people at the Maybe we should catch a bus instead.
- 2 What's the on motorways?
- 3 Can you take this letter to the for me?
- 4 I live on the fourth floor of that
- 5 It's compulsory for cars to stop at a
- 6 Is this your? Is it OK to put plastic in it?
- 7 Let's meet at the There are lots that go into the centre from there.
- 8 The says turn right.

3  Work with a partner. Turn to page 121.

1. Taxi rank
2. speed limit
3. post box
4. apartment building
5. pedestrian crossing
6. recycling bin
7. bus stop
8. road sign

3 Ask and answer the questions with a partner.

- 1** Where's the nearest post box to your home?
- 2** What's the speed limit near your school? Is it too high?
- 3** How often do cars stop at pedestrian crossings?
- 4** What do you do while you are waiting at bus stops?
- 5** How many recycling bins are there in your school?
- 6** How many different types of road sign can you think of?

