

The PENGUINS of MADAGASCAR



Popcorn Panic





zookeeper



Bit on the nose!

- If a teacher says, "**You must study or you will fail,**" that is "**on the nose**" because it is very direct and not creative.
- In a movie, if a character **is sad** and says, "**I am sad,**" it is "**on the nose**" because we can already see they are sad.
- It's like saying, "You don't need to say it so directly."

outstanding



Very good or excellent.

regurgitated



It means to bring food back up from the stomach into the mouth.

Get rid of something.



remove or throw away



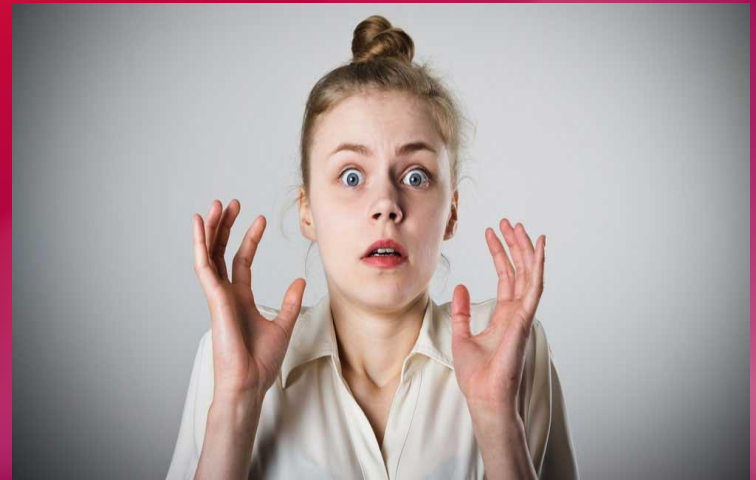
being in Charge of



Be responsible for or to be the leader of something.

Pre-viewing task

Guess the story of this episode by using these two words :
'Popcorn' and 'Panic'.





While-viewing task

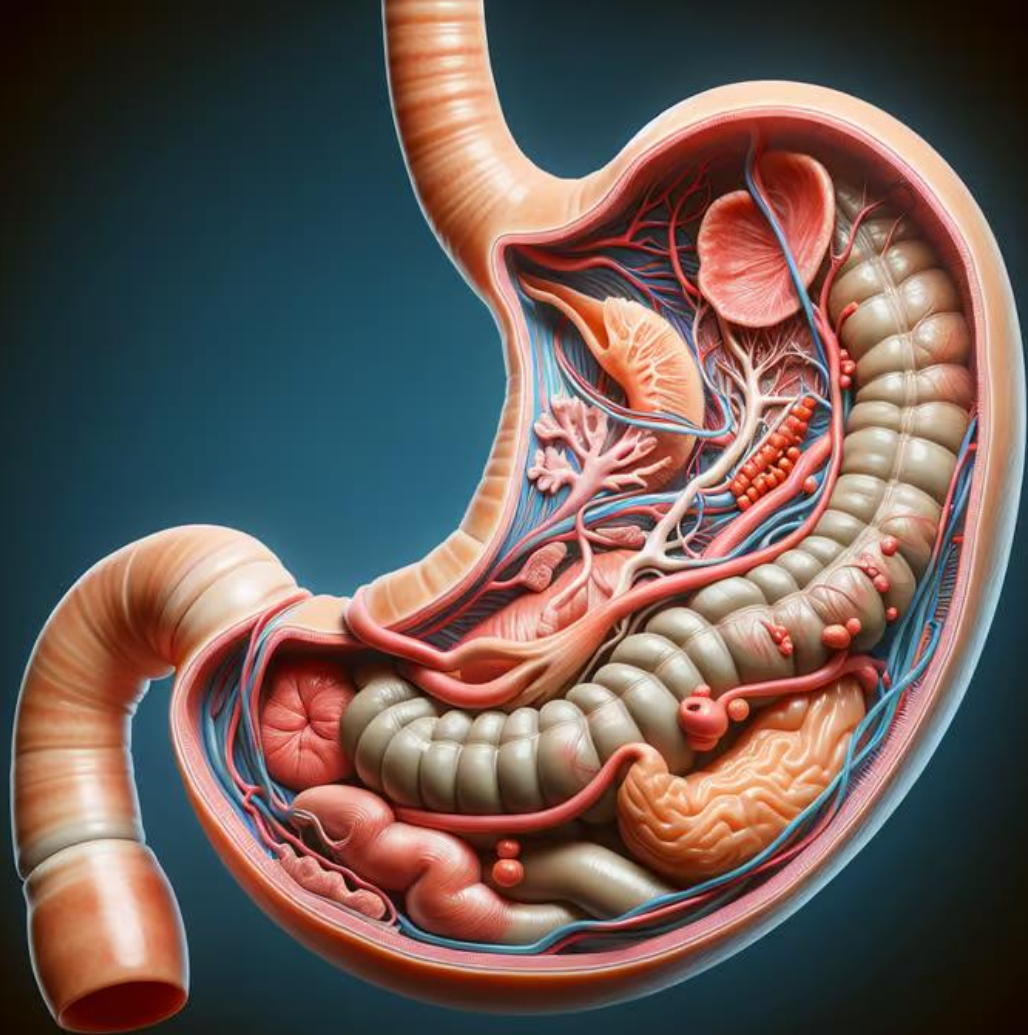
1. What do the characters want to get?
2. Who is in charge of the team?
3. Why does Zookeeper Alice not want people to feed the animals?

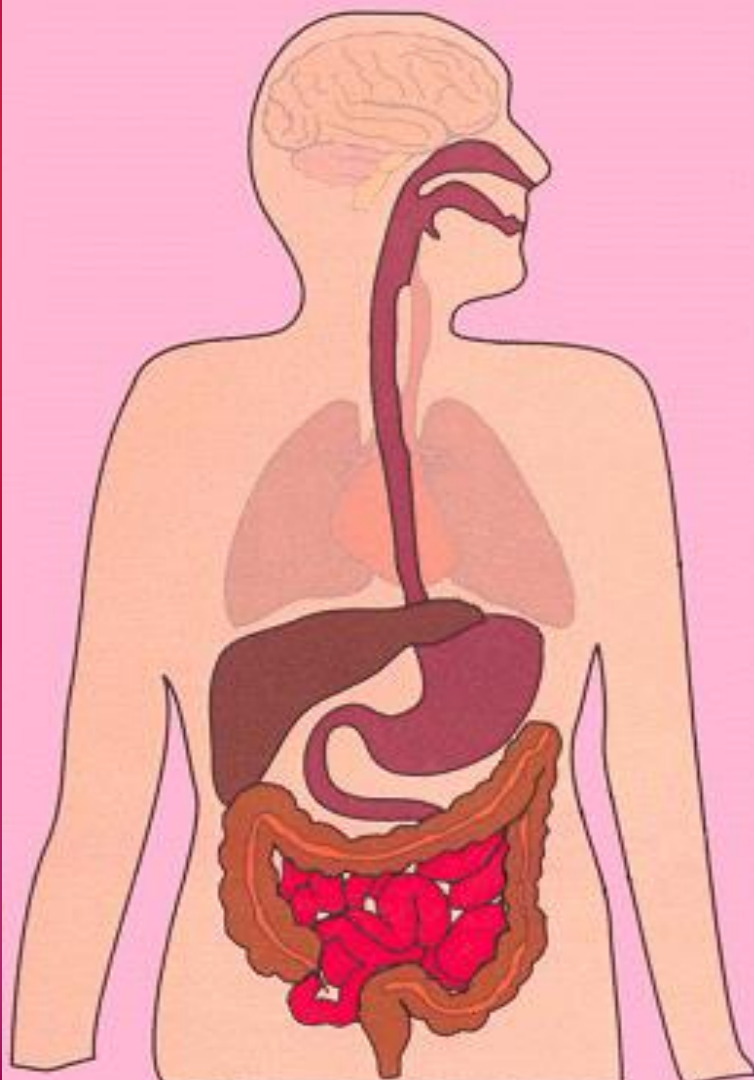


2:00

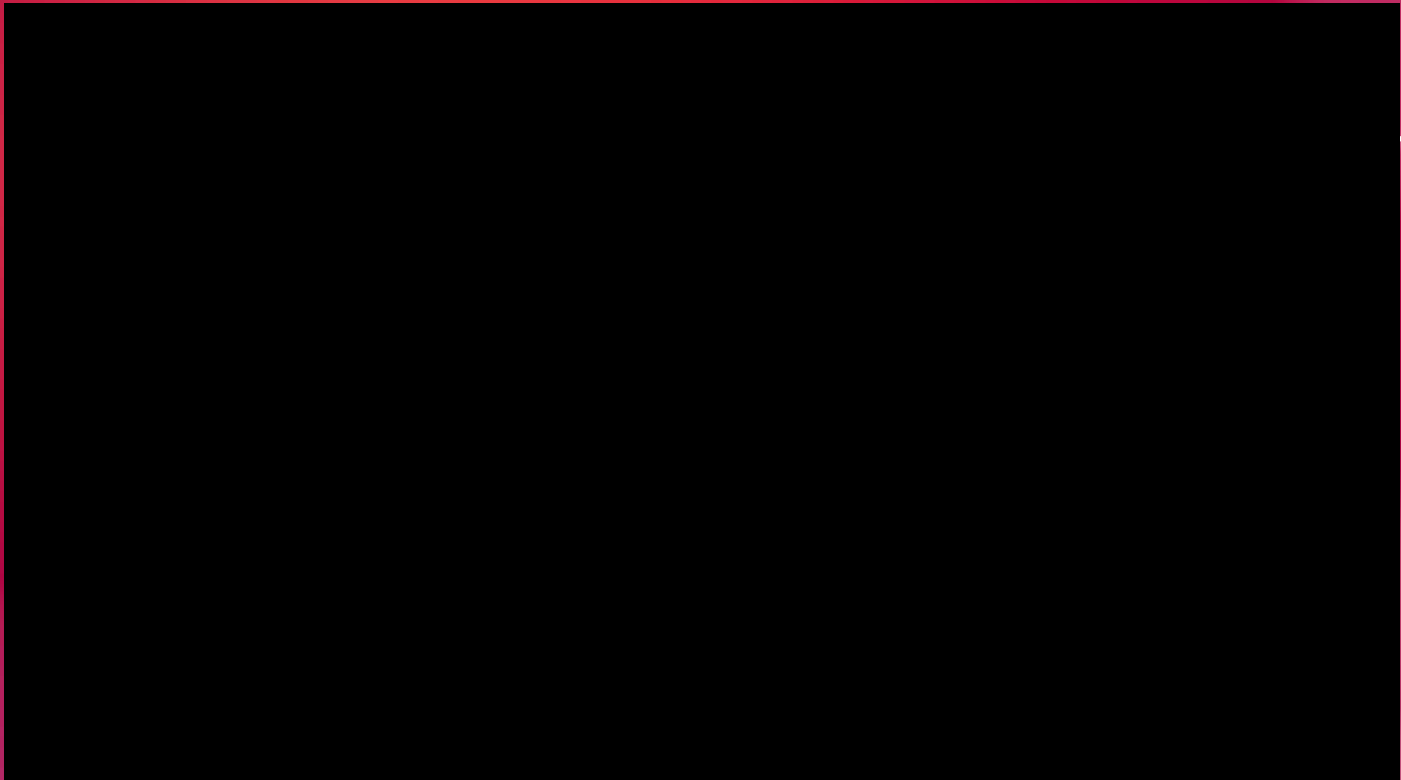


stomach(n)





digest (v)
digestion (n)



Attack-stack men!

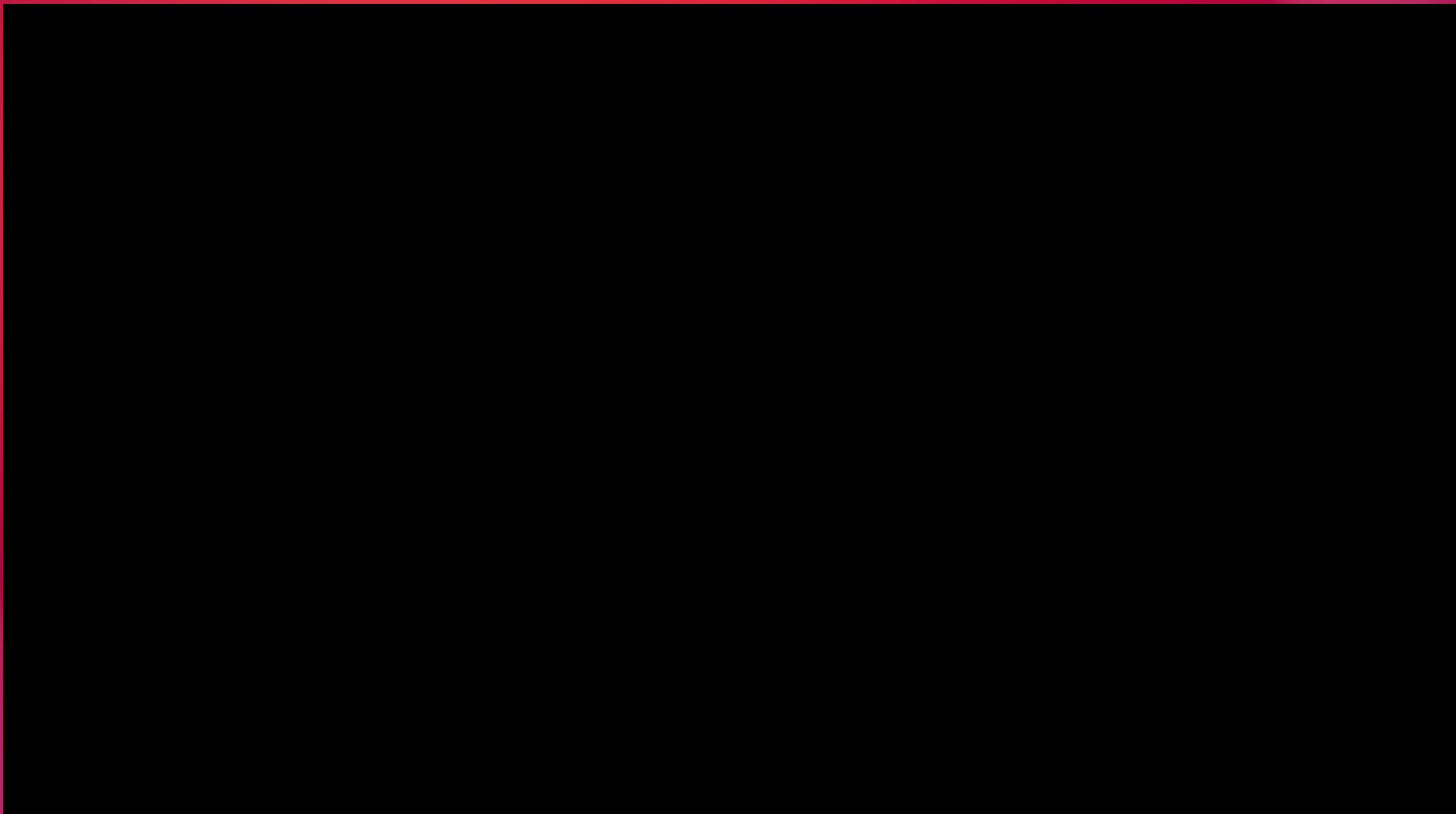


flightless bird-type creatures



flightless bird-type creatures





Finders keepers!



hatch(v)



They need to be hatched!



earthquake

Post-viewing task :

- 1- Do you know what is the process of making popcorn?
- 2- Have you ever made popcorn?
- 3- How did King Julian want to hatch the popcorn?

03:00



Follow-up task

Watch the episode once again at home and put T or F for each sentence.

- 1-The zookeeper didn't let the kid to feed the animal.
- 2- The penguin didn't know how to make the popcorn.
- 3- King Julian was the first person who found the popcorn.
- 4- People were allowed to feed the animal in the zoo.