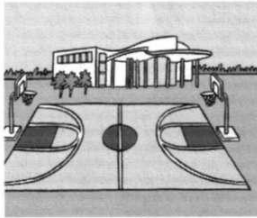
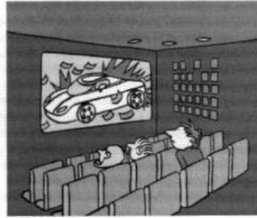


## VOCABULARY ■ Places in a town

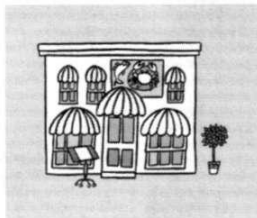
- 1 ★ Look at the pictures and choose the correct words.



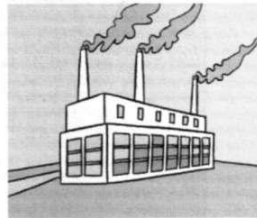
sports centre / shopping centre



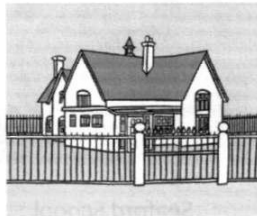
1 café / cinema



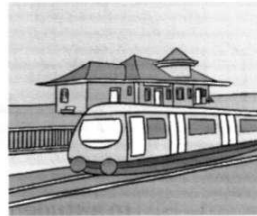
2 restaurant / shop



3 factory / hospital



4 car park / school



5 train station / library

- 2 ★★ Complete the words in the sentences.

She's got a very bad leg. She's in h o s p i t a l.

- 1 My dog loves swimming. He's in the r \_\_\_\_\_.
- 2 They're o \_\_\_\_\_. They aren't shops.
- 3 We haven't got any milk. We're at the s \_\_\_\_\_.
- 4 He's interested in Picasso. He's at the a \_\_ g \_\_\_\_\_.
- 5 We're in my f \_\_\_\_\_. It's near my school.
- 6 The b \_\_ s \_\_\_\_\_ is in town.
- 7 There aren't any cars in the c \_\_ p \_\_\_\_.
- 8 The s \_\_\_\_\_ c \_\_\_\_\_ is near the train station.

- 3 ★★ Look at the picture. Write four more sentences about places you can see and four sentences about places you can't see.



There's a café.

- 1 \_\_\_\_\_
- 2 \_\_\_\_\_
- 3 \_\_\_\_\_
- 4 \_\_\_\_\_
- 5 \_\_\_\_\_
- 6 \_\_\_\_\_
- 7 \_\_\_\_\_
- 8 \_\_\_\_\_

- 4 ★★★ Complete the sentences about your town.

My town has got \_\_\_\_\_ a bus station \_\_\_\_\_.

- 1 My house is near \_\_\_\_\_.
- 2 My school is next to \_\_\_\_\_.
- 3 There's a \_\_\_\_\_ in my town.
- 4 There isn't a \_\_\_\_\_.
- 5 There aren't any \_\_\_\_\_.
- 6 There are some \_\_\_\_\_.
- 7 My mum likes the library, but I prefer \_\_\_\_\_.
- 8 The shops \_\_\_\_\_.