

architecture



Watch movie

architect





column

pillar



column



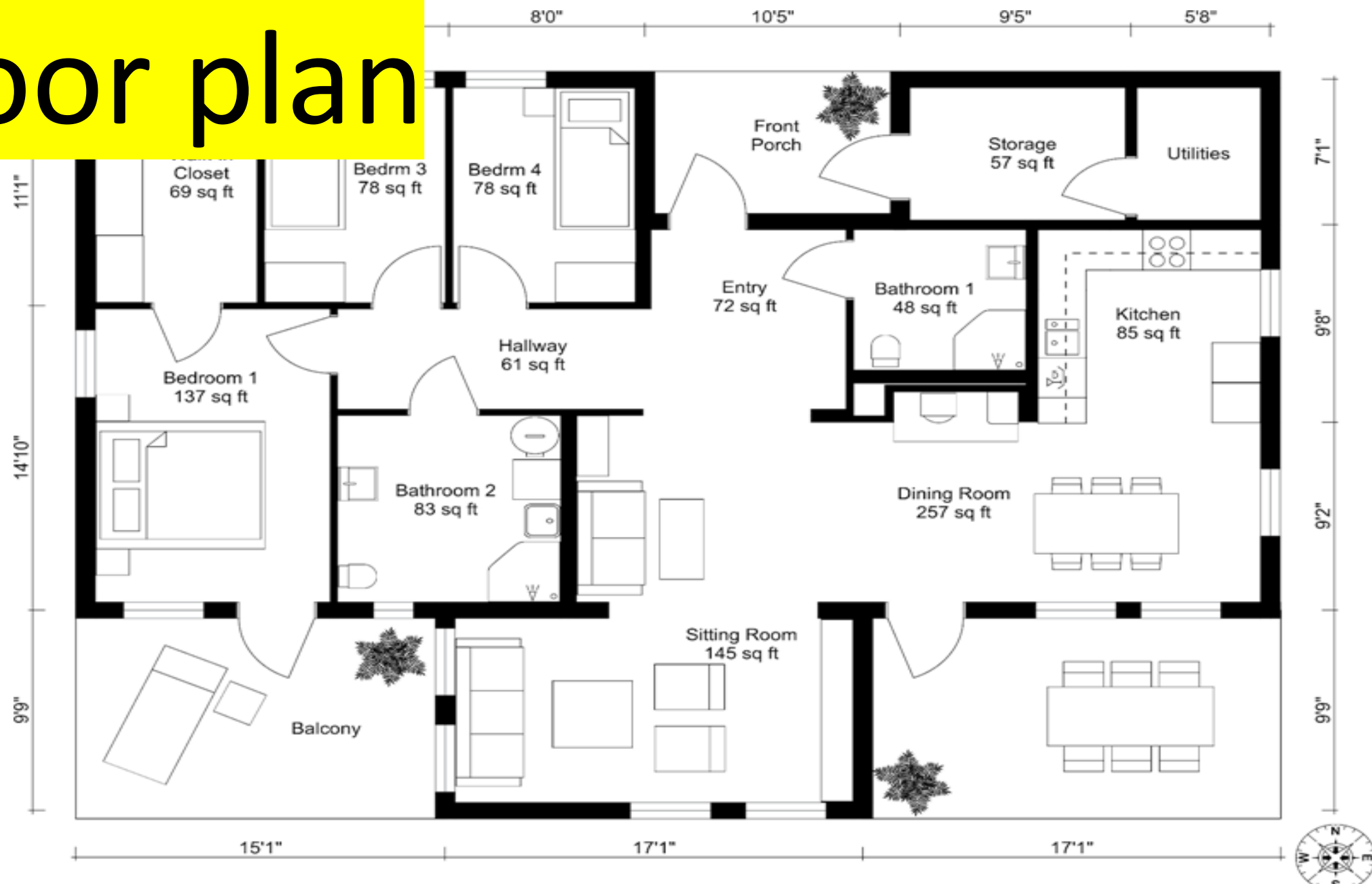
dome



arch



floor plan



foundation





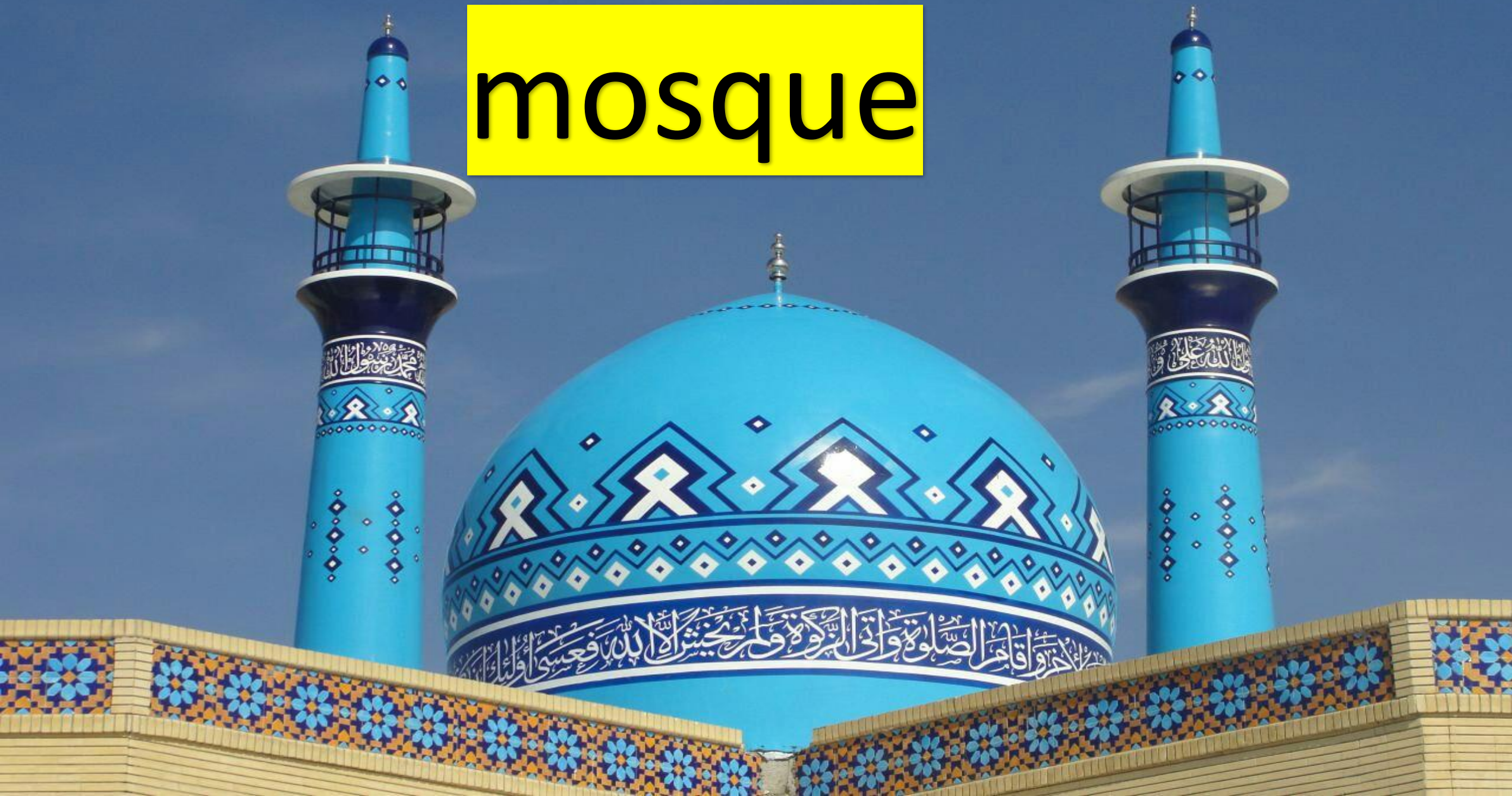
Window frame



staircase



mosque



church



temple



apartment



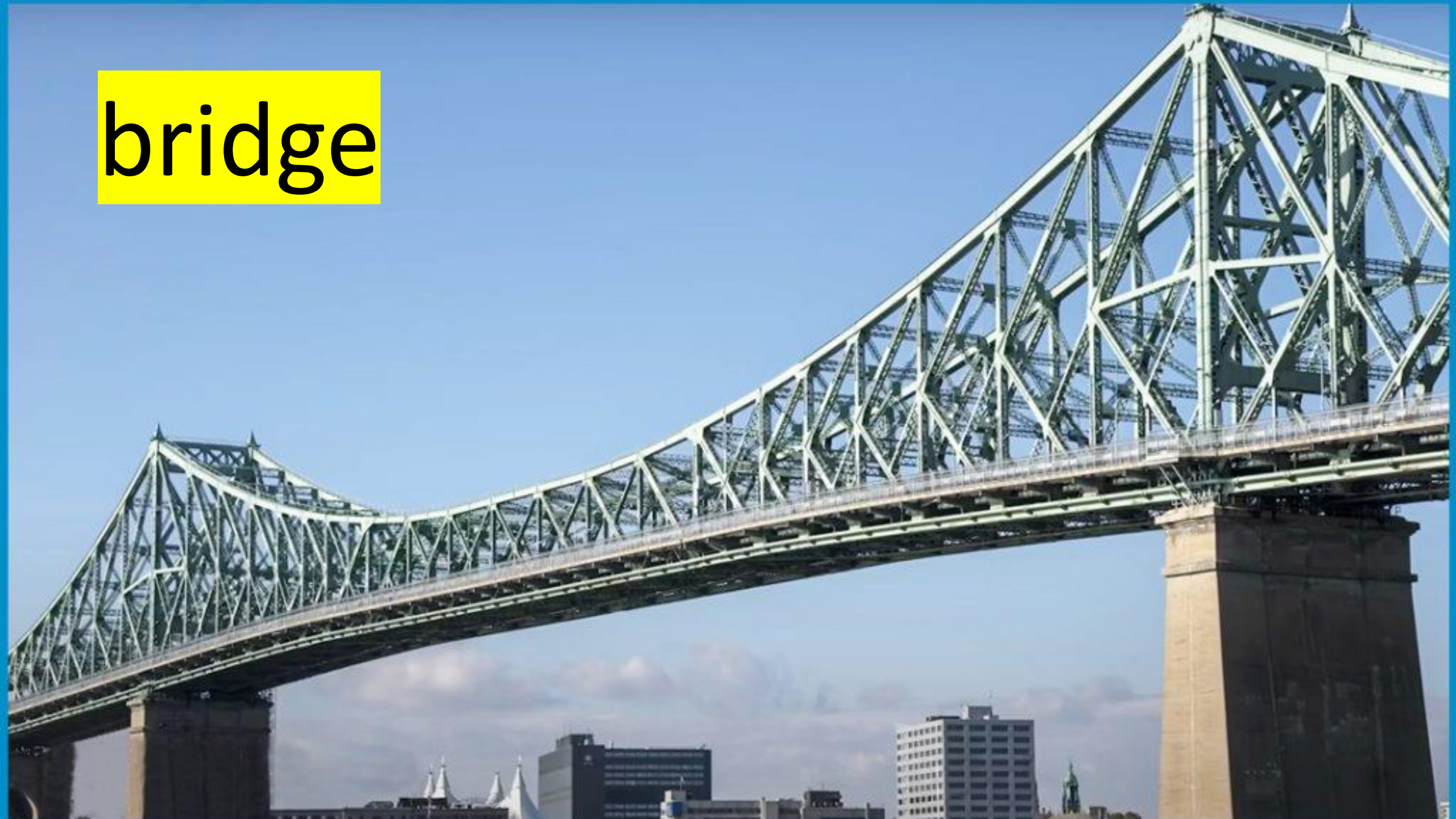
tower



skyscraper



bridge



hospital



stadium



tomb



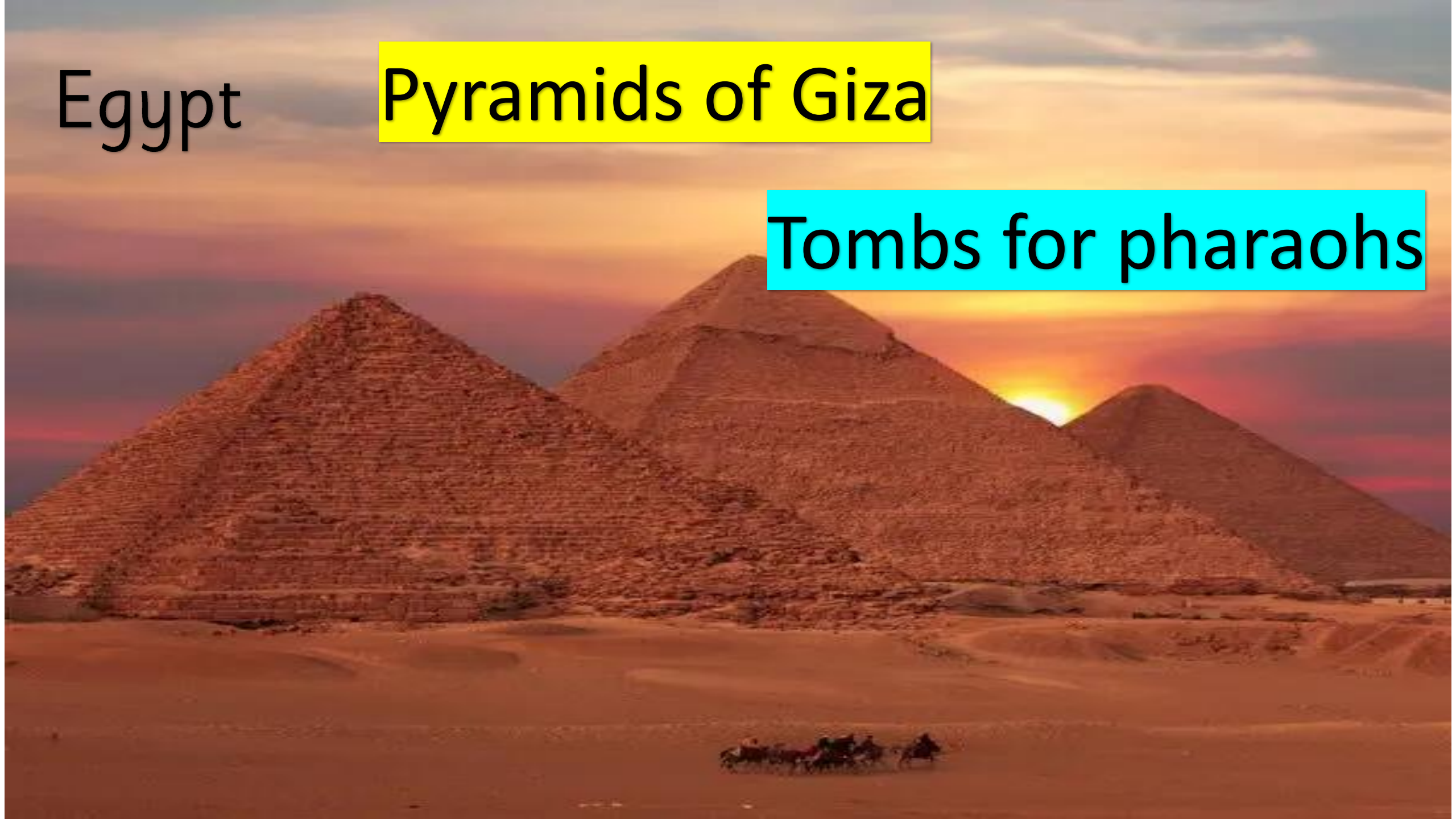
Watch movie



Egypt

Pyramids of Giza

Tombs for pharaohs



Mesopotamia

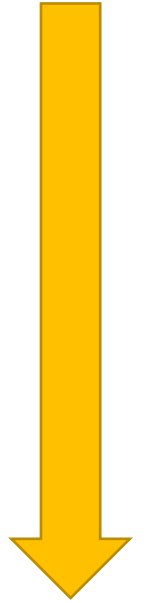
ziggurats

Temples shaped like steps



Greece

Parthenon



temple with tall columns

Rome

Colosseum

Arena for shows and games



Iran -Persia

Persepolis



Royal city with grand columns and carving

China

Great wall



Defense structure

Maya

Pyramids and palace in Latin America



Hand tools



animal power




human labor



stone





mud brick

wood



clay






ramp



pulley

A photograph of a complex scaffolding system made of metal poles and cross-braces, surrounding a building under construction. The poles are painted with yellow and green safety markings. The background shows a clear sky and the building's facade.

scaffolding

How they were built without machines?

People used

- Hand tools
- Animals power
- Human labor

Material were local : stone – mud brick -Wood and clay

They invented clever solutions like :

Ramps – pulleys-scaffolding

Watch movie



What is

Modern architecture

The style of buildings built mostly in the last 100 years.

Architects today try to make building that are beautiful” Useful, and sometimes surprising.

Modern architecture

```
graph TD; A[Modern architecture] --> B[New ideas]; A --> C[Simple shapes]; A --> D[Open spaces]; A --> E[Eco friendly];
```

New ideas

Simple shapes

Open spaces

Eco friendly

Architects today try to make building that are
beautiful” Useful, and sometimes surprising.



Burj Khalifa

(UAE)

Tallest skyscraper in the world



The Shard (Uk)

Glass tower that looks like a sharp crystal

Sydney Opera House (Australia)

White “sail” shapes on the water



The image shows the Fallingwater house, a famous modernist residence designed by Frank Lloyd Wright. The house is built over a waterfall in a dense, green forest. The building features multiple levels with cantilevered balconies and large windows that offer views of the surrounding nature. The architecture is integrated with the natural environment, with stone and concrete materials used in its construction. The waterfall flows over rocks directly beneath the house, creating a misty spray of water. The surrounding forest is lush with green trees and foliage, creating a serene and natural setting for the building.

Falling water

(USA)

A house built over a waterfall.

Heydar Aliyev Center

(Azerbaijan)



Flowing – wavy shapes with no straight lines

Useful vocabulary for introducing Modern Architecture

Skyscraper: Very tall city building

- Steel / Glass / Concrete

strong modern materials

- **Minimalist**- very simple design
- **Innovation** a new and smart idea
- **Open-plan** big rooms without walls
- **Green building** designed to protect the environment
- **Curved / Asymmetrical /**
Transparent fun words for shapes and looks

- **Minimalist** - very simple design



- **Innovation** a new and smart idea



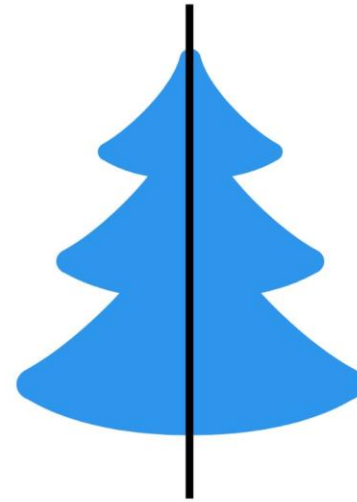
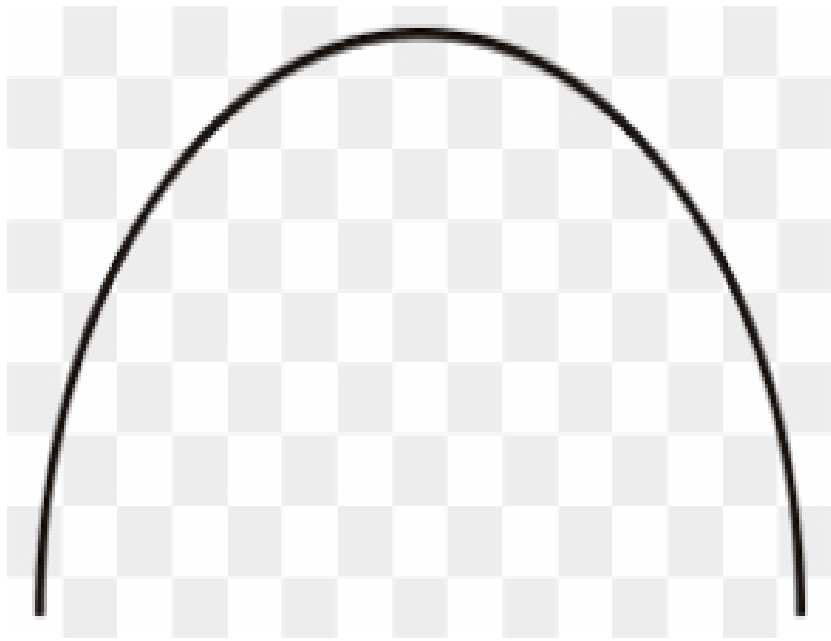
- **Open-plan** big rooms without walls



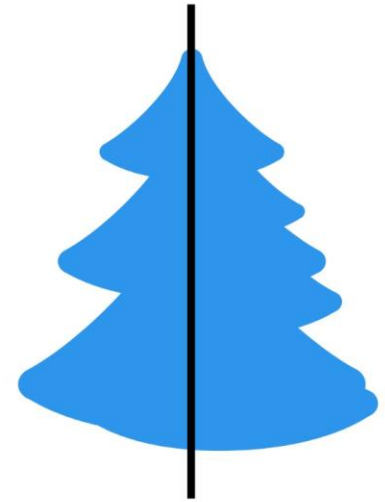
- **Green building** designed to protect the environment



- **Curved / Asymmetrical** / Transparent fun words for shapes and looks



Symmetrical



Asymmetrical

