

IN THE NAME OF GOD

SASSAN FAKHIMI

Press Esc to exit full screen



A
**Strong currents.
No swimming.**

B
**Poison, external
use only.**

C
Emergency exit

D
**Radioactive
hazard**

What are these warnings?



Which one is a crime?

Drinking in public

Wearing shorts and sandals in public

Bank robbery

Smoking

Hacking

Installing a virus on a PC

Dancing in public

Crime



Who thinks downloading games illegally is not a problem?

It's like an invisible crime. You can't see the victim. That's why many people don't feel bad about it. **Joe**

It's the same as stealing from a shop. It's simply dishonest and unacceptable. **Samantha**

You're very unlikely to get caught. That's why people do it. **Harry**

DVDs and computer games are so expensive. It's unsurprising that people download them illegally. But it's unfair on the small, independent companies. **Mark**

I have no sympathy for the big film and music companies – they make a lot of money, so I think illegal downloading is OK. **Hannah**

Who likes Kale-Pache?

I don't like it.

I dislike it.





Is it possible that Tom Cruise go into the plane?

No it's not possible.

No it's impossible.

Drink
Drank
Drunk

Is drink a regular verb
and supporting “ed”?

No. it is not regular.

No. it is irregular.



Is Pinocchio honest?

No. he is not honest

No. he is dishonest

0:37

✓ 0

Press to exit full screen

Choose the correct prefix. The
black sofa is very _____ comfortable.

A

un

B

dis

C

im

D

re



PREFIXES

WHAT ARE PREFIXES?

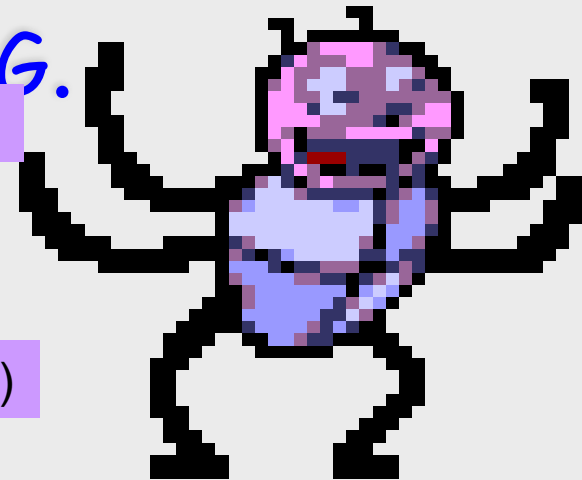
- A PREFIX IS A GROUP OF LETTERS WE ADD TO THE FRONT OF A WORD.
- PREFIXES CHANGE THE MEANING OR

PURPOSE OF THE WORD F.G.

How has the word meaning been altered?

UNKNOWN - UNKNOWN

The word has become its opposite meaning (antonym)



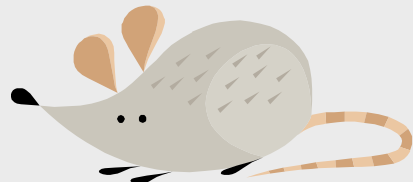
THE PREFIX 'UN'

- MY MUM WAS ~~UN~~WELL AT THE WEEKEND WITH A BAD COLD.



THE PREFIX 'UN'

- JERRY SEEMED
UNHAPPY THAT THE
CAT WAS BY HIS
HOLE.



THE PREFIX 'DIS'

- SALLY
DISAGREED
WITH TOM
OVER WHO
THREW THE
SNOWBALL.

How has the word meaning been altered with this prefix?

agree-----disagree



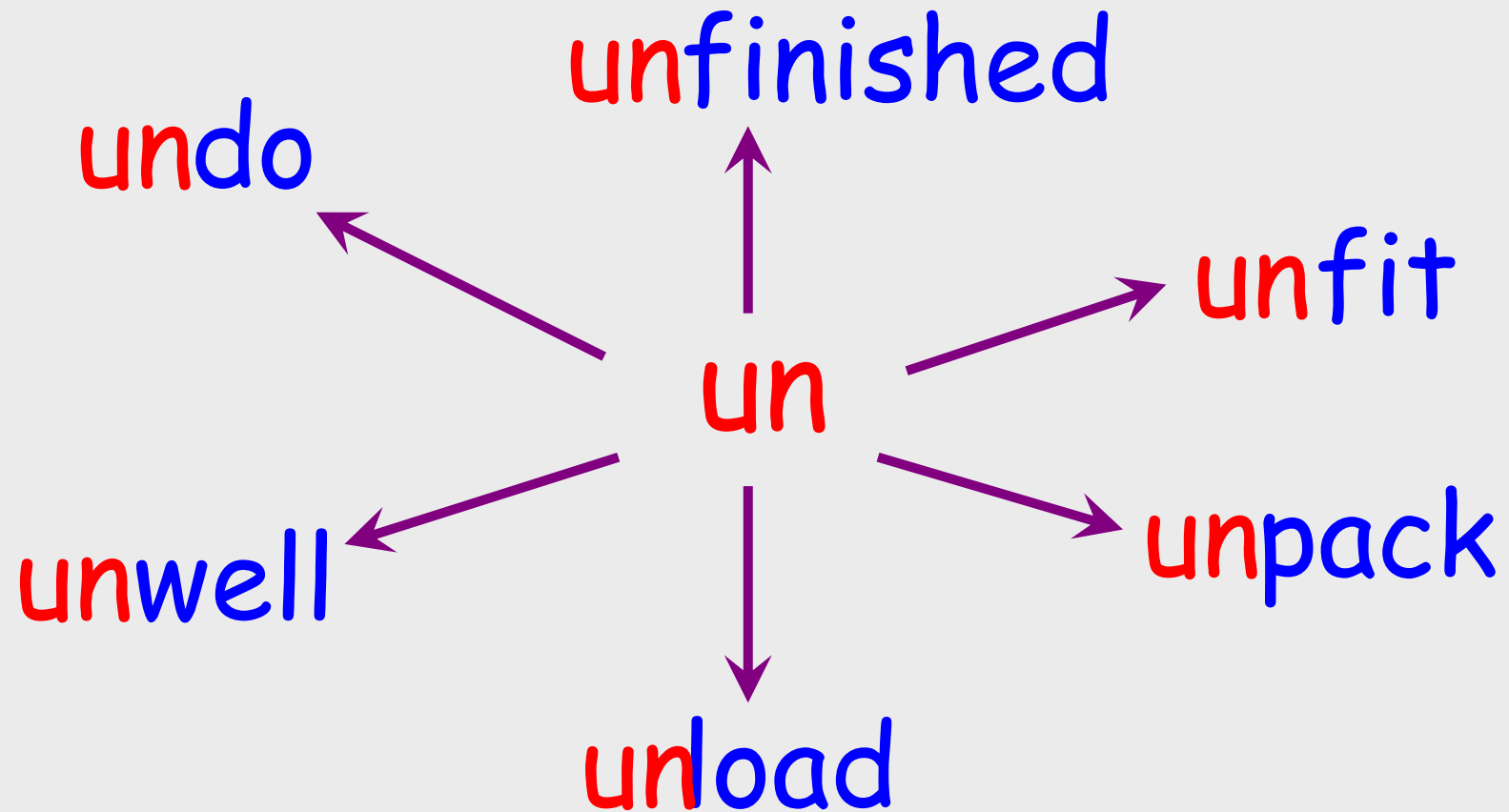
Again the word has become an antonym (opposite) of the root word.

THE PREFIX 'DIS'

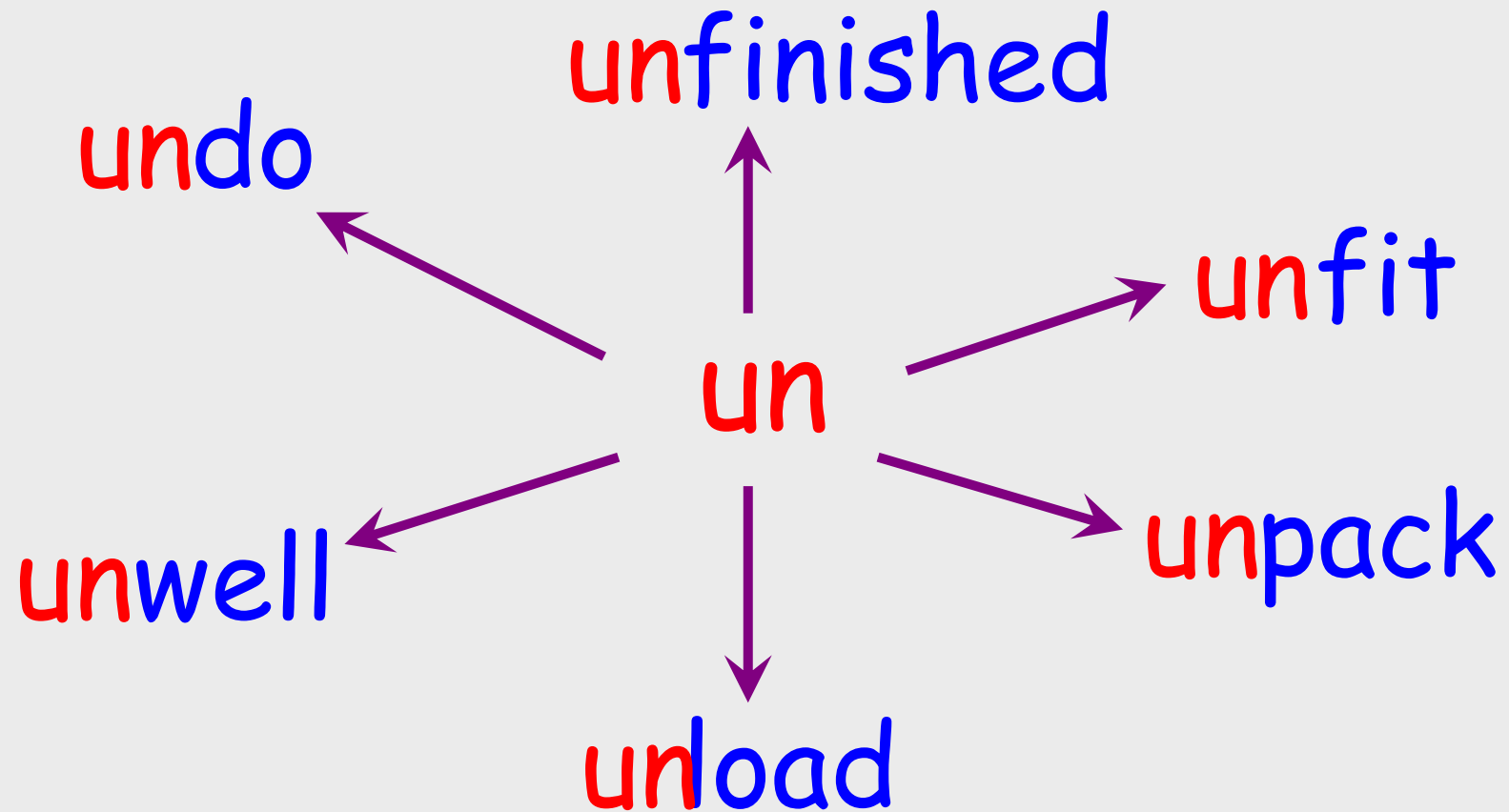
- ~~CAN YOU~~
DISABLE THE
ALARM?



ADD THE PREFIX 'UN' TO
THESE ROOT WORDS!



ADD THE PREFIX 'UN' TO
THESE ROOT WORDS!



Is it 'un' or 'dis'?

unfit unwell discharge
uncover
disagree disobey
disappear
disbelief disapprove

acceptable _____ unacceptable _____

dependent _____ independent _____

fair _____ unfair _____

honest _____ dishonest _____

legal _____ illegal _____

likely _____ unlikely _____

surprising _____ unsurprising _____

visible _____ invisible _____

Use your dictionary and find the word

Loyal

loyal /'ləɪəl/ *adj* [used about a person] not changing in your friendship or beliefs: **a loyal friend/supporter** SYN **faithful** OPP **disloyal** ▶ **loyally** *adv* ▶ **loyalty** /'ləɪəlti/ *noun* [C,U] (*pl* **loyalties**)

Rewrite the sentences in
the **negative** way

1 Her bedroom is in a mess. (tidy)

Her bedroom is untidy.

That answer is incorrect.

2 That answer is wrong.

It's unkind

to tease your little sister. (kind)

3 He was very impolite to me!

4 Don't use that old microwave. (safe)

It's unsafe.

5 I'm dissatisfied with

my exam results. (satisfied)

6 That story is unbelievable.

7 This exercise is impossible!

Complete the sentences with the opposite adjectives.

- 1 Is your handwriting legible or **illegible** _____ ?
- 2 Are you generally honest or **dishonest** _____ ?
- 3 Do you think teenagers are generally responsible or **irresponsible** _____ ?
- 4 Are you generally patient or **impatient** _____ ?
- 5 Is smoking in public places legal or **illegal** _____ in your country?
- 6 Do you think that reversing climate change is possible or **impossible** _____ ?

Ask your partners

Is your handwriting legible or illegible?

My handwriting is legible.

Are you honest or
dishonest?

Is drinking 2litre of coffee
possible or impossible?

*certain – uncertain patient – impatient
honest – dishonest responsible – irresponsible*