



Ask for and give directions

Excuse me. How do I get to the river from here?

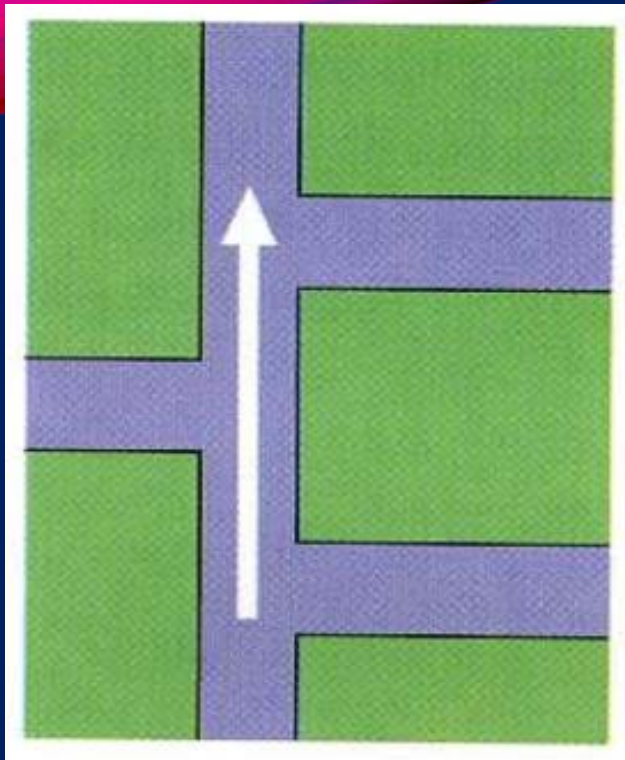
Excuse me. Do you know the way to the railway station?

Excuse me. Is there a hotel near here?

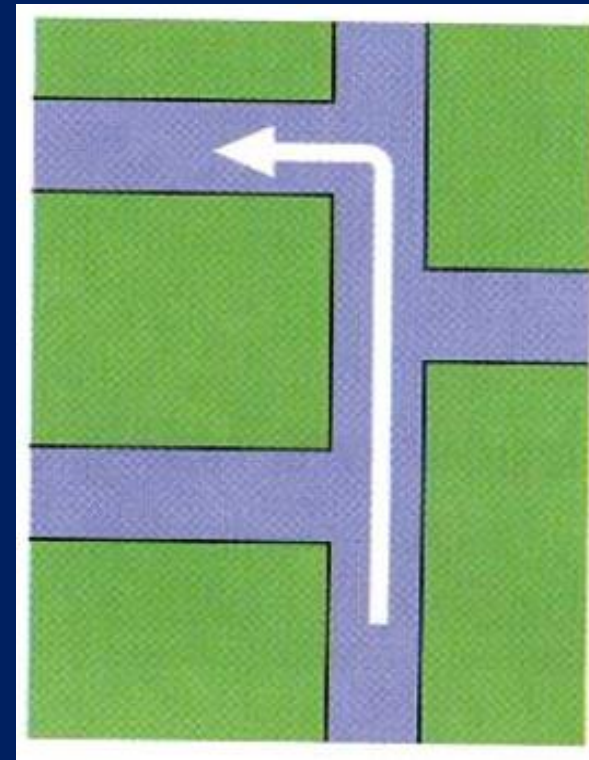
spotlight *Excuse me...*

It is polite to say **excuse me** to someone you don't know when you ask them a question.

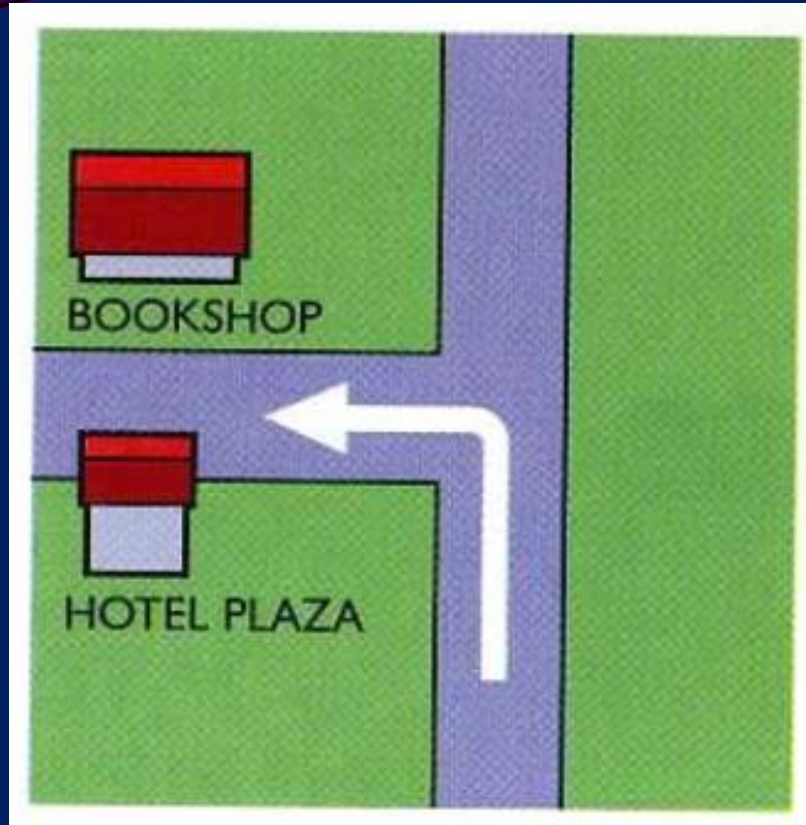




*Go straight on. Or
just keep going.*

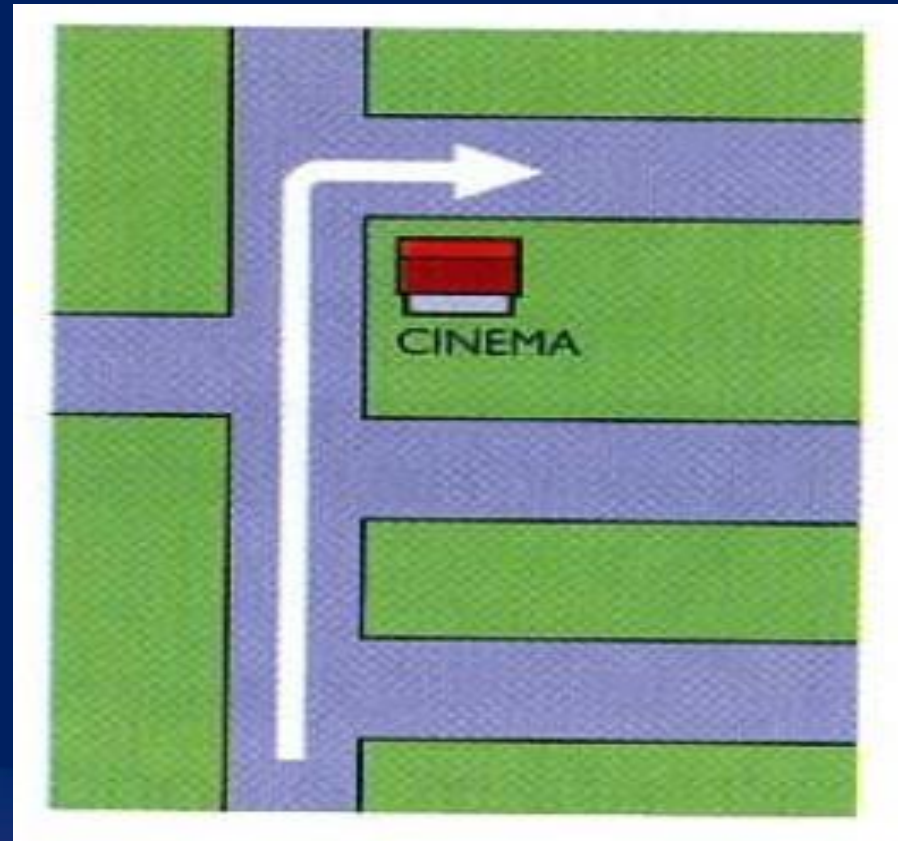


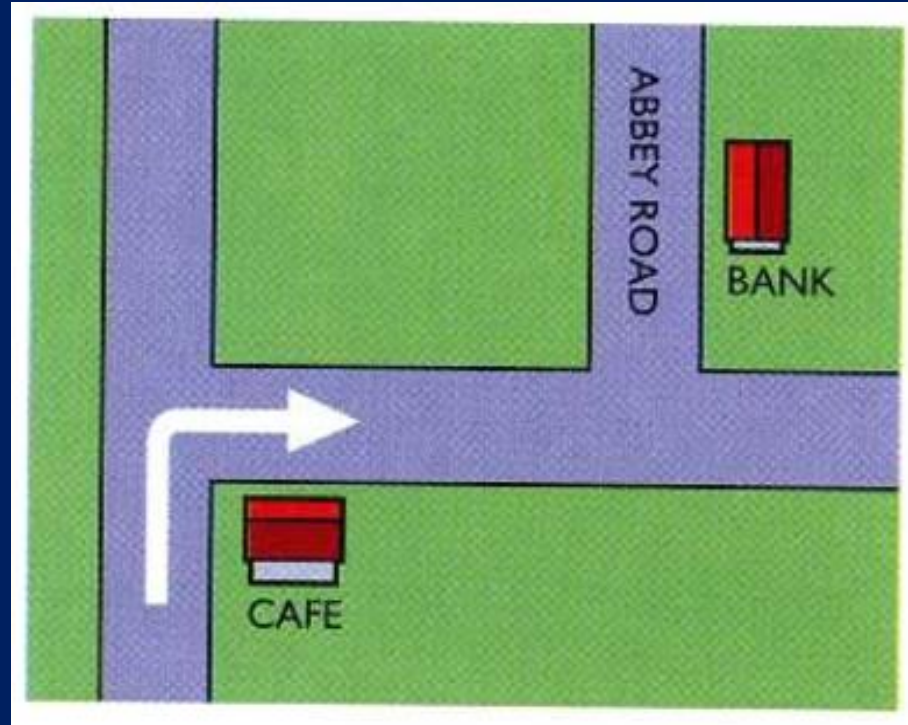
*Go along and take the
second turning on the left.*



*Go along and turn left.
The bookshop is opposite the Hotel Plaza.*

*It's the third turning on the right.
There's a cinema on the corner.*





Turn right at the café, then left into Abbey Road, and the bank is on your right.

Thanks very much.




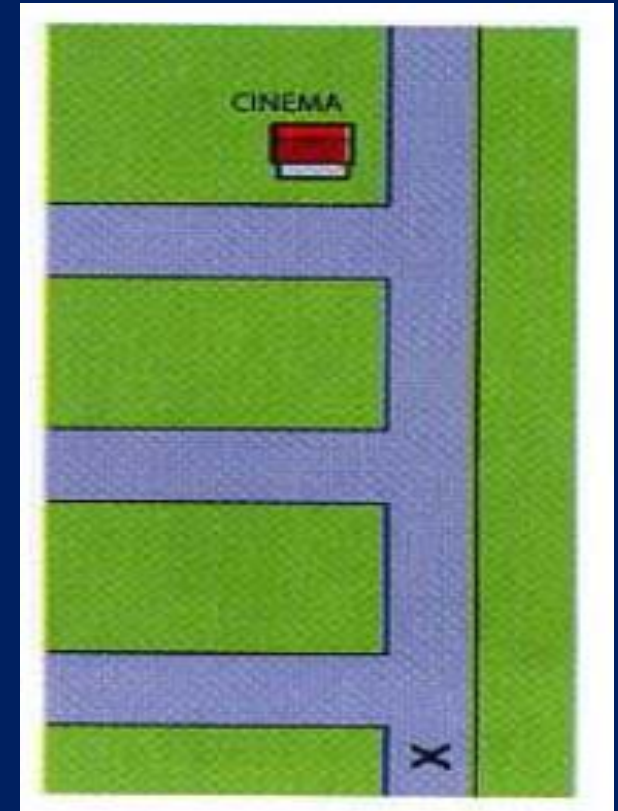
Exercise

1. turn / and / go / right / here / along

Go along here and turn right.

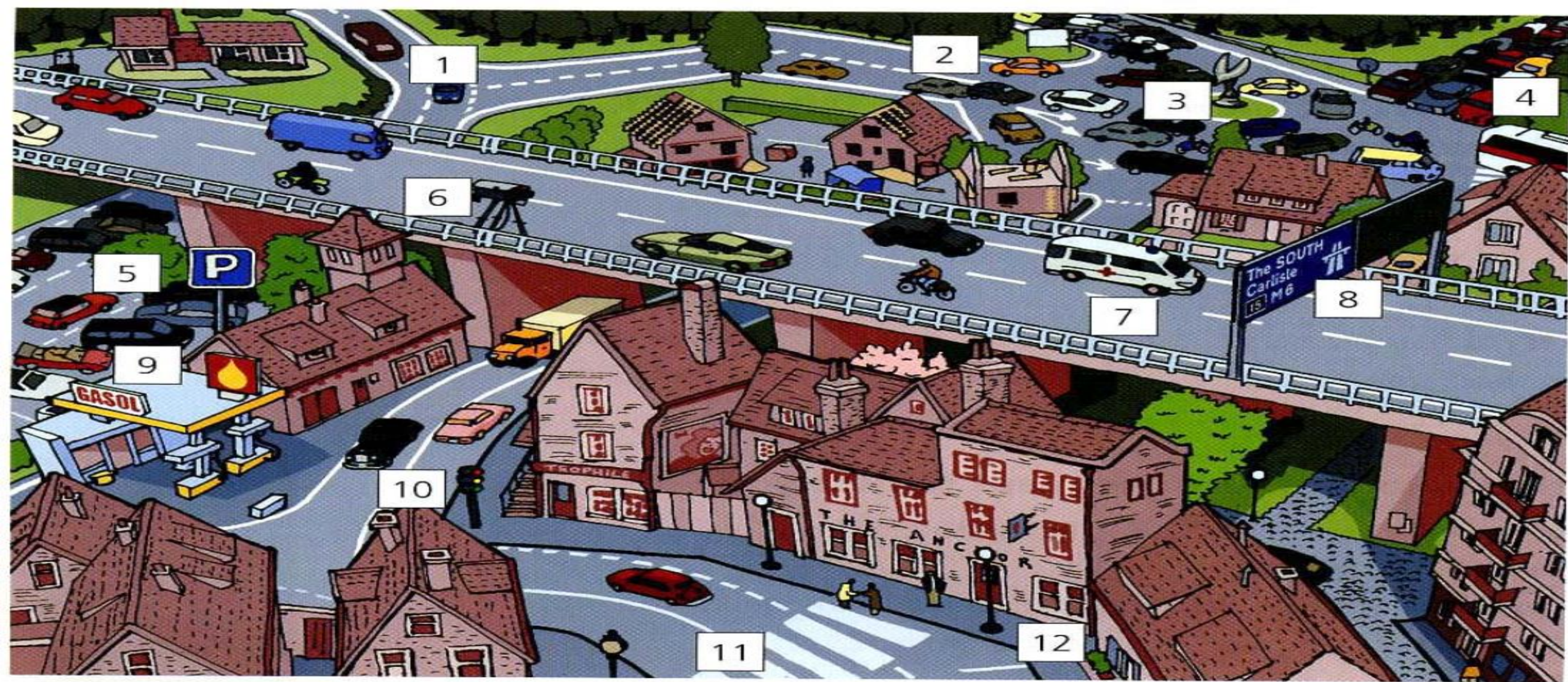
2. turn (left or right)

1 A Excuse  me . How do I (1) _____ to
the cinema from here?





Roads and traffic



1 junction

2 traffic U

3 roundabout

4 traffic jam

5 car park

6 speed camera

7 main road

8 road sign

9 petrol station

10 traffic light(s)

11 pedestrian crossing

12 pavement

Exercise

1. traffic park / light

2. You can go- The traffic*light* green.

