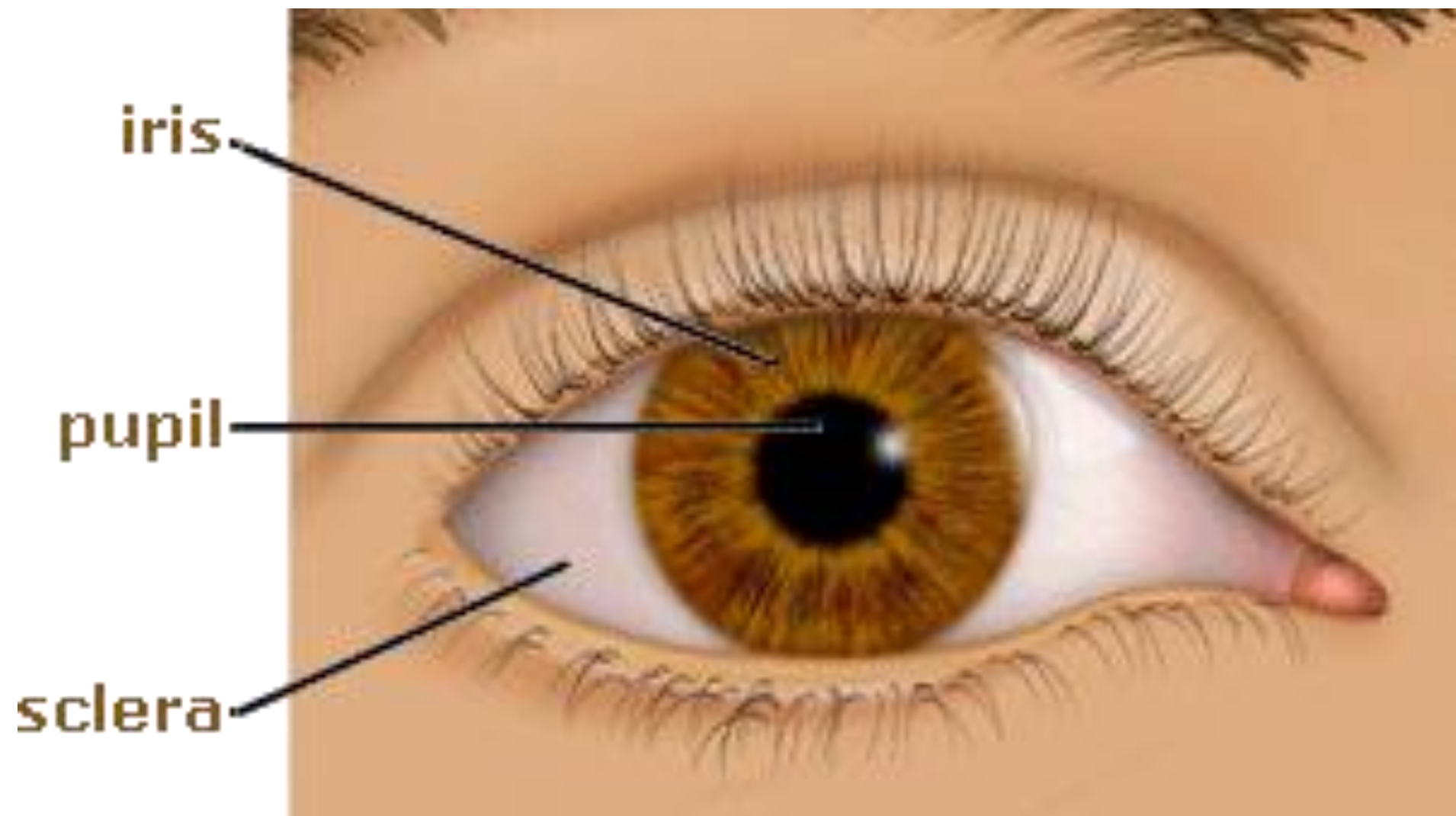
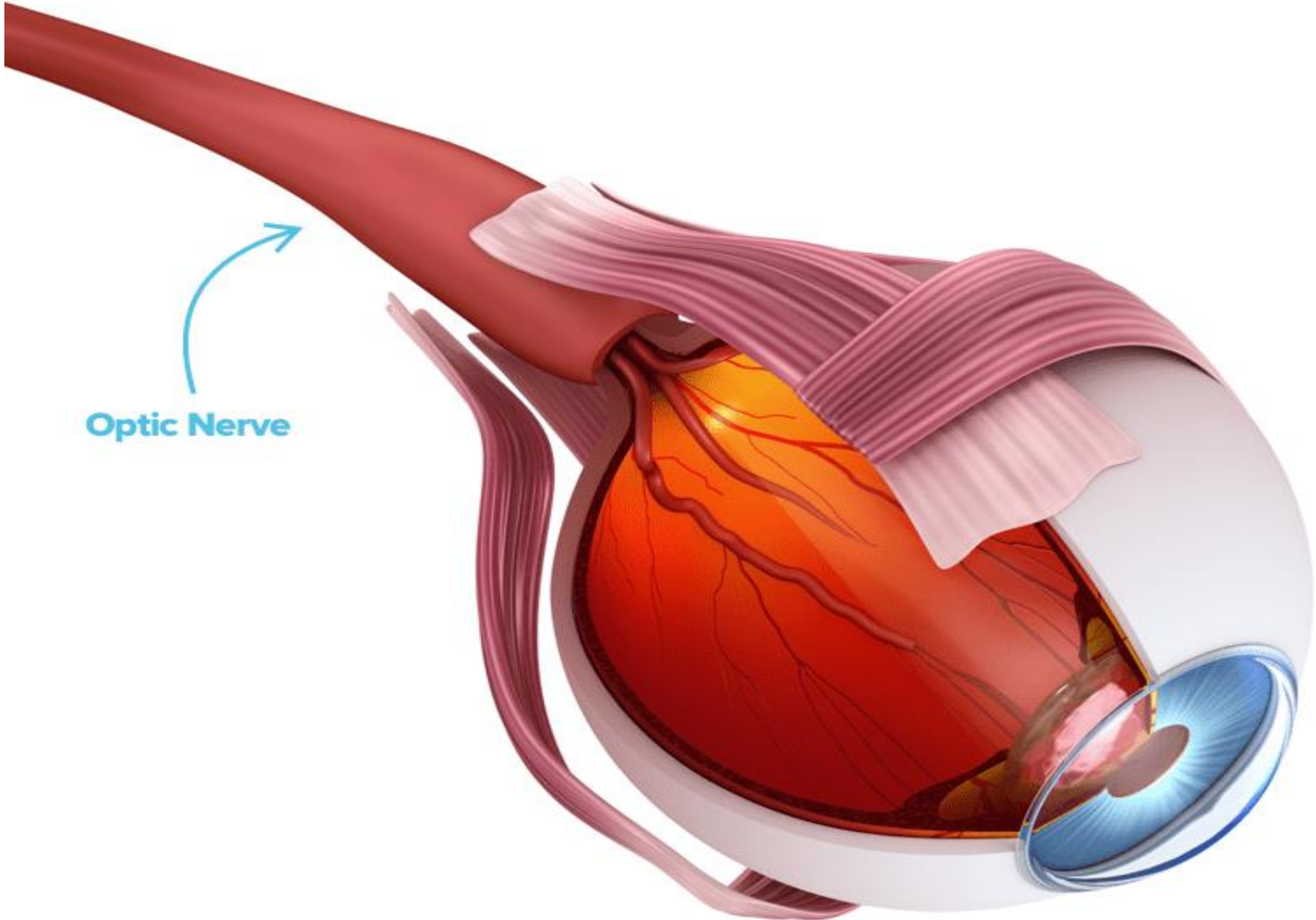
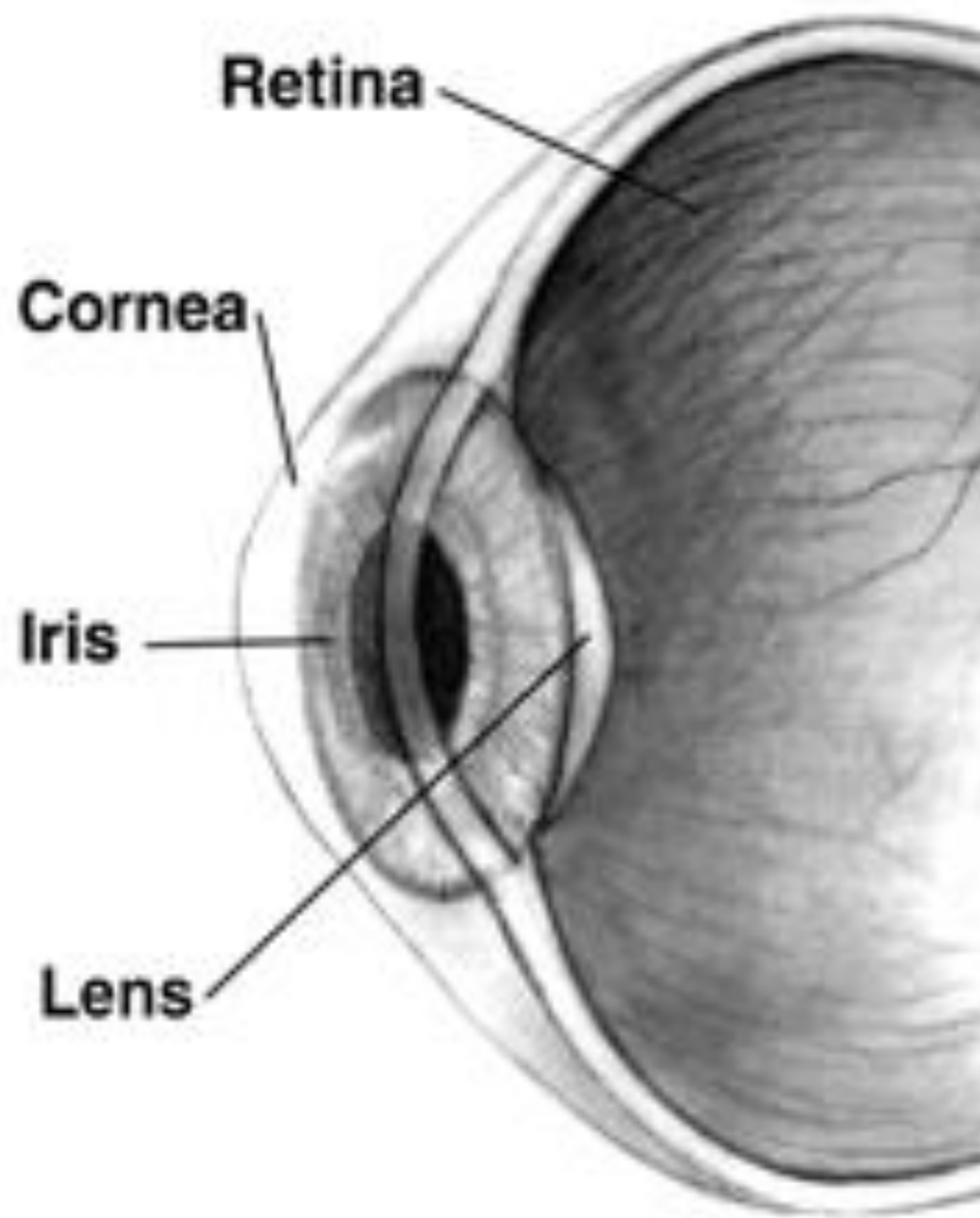


cornea





Optic Nerve



1. **Cornea:** The cornea is like a clear window at the front of your eye. It helps to focus light onto the inside of your eye.
2. **Iris:** The iris is the colored part of your eye. It's like the curtain of the eye. It can open and close to control how much light enters the eye.
3. **Pupil:** The pupil is the black spot in the middle of your eye. It's a small hole that can get bigger or smaller to let in more or less light.
4. **Lens:** The lens is behind the pupil. It's like a little magnifying glass that helps to focus the light on the back of the eye.
5. **Retina:** The retina is at the back of your eye. It's like a screen that collects the light and turns it into signals that go to your brain.
6. **Optic Nerve:** The optic nerve is like a cable that carries those signals from the retina to your brain so you can see and understand what you're looking at.
7. **Sclera:** The sclera is the white part of your eye. It's like the protective outer covering of your eye.