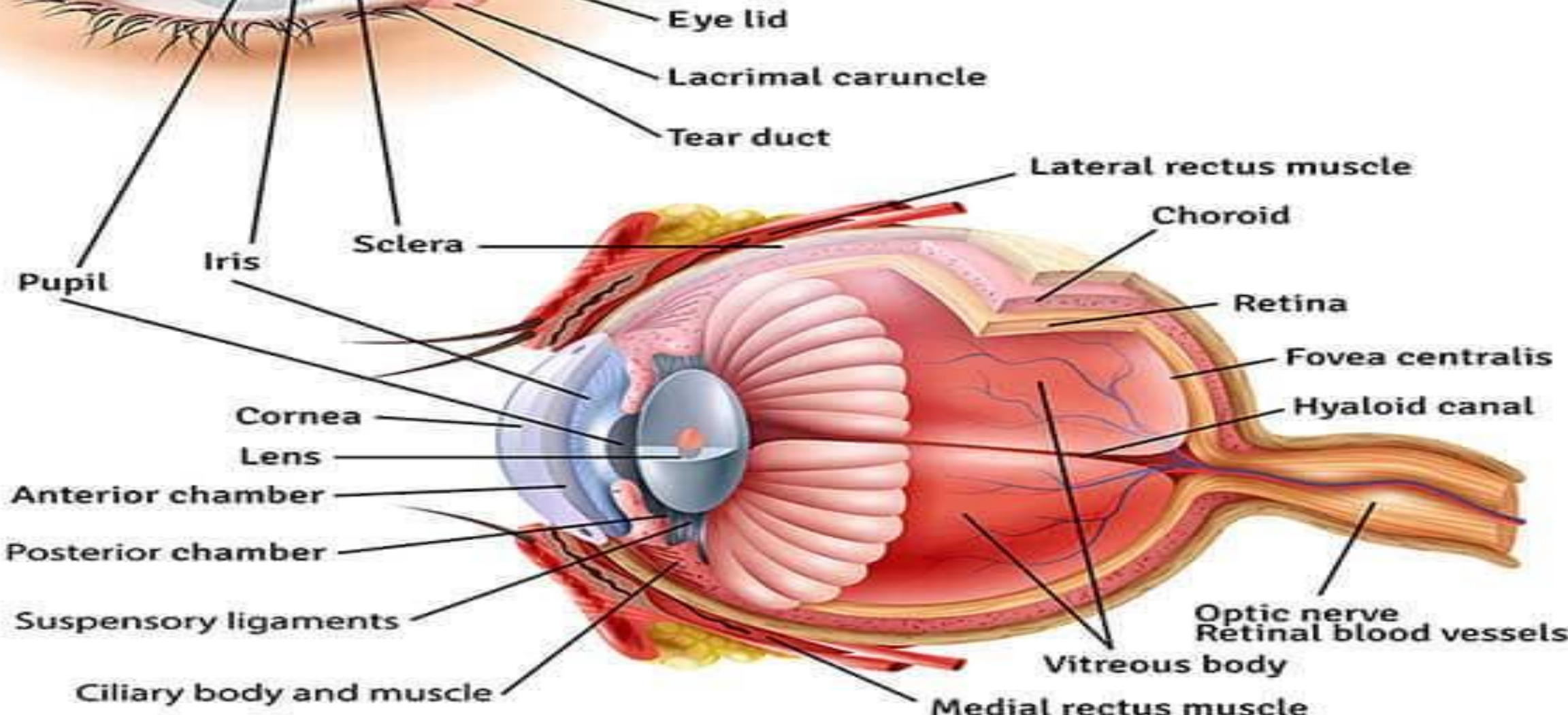


Scientific project 2

eye anatomy

Right Eye

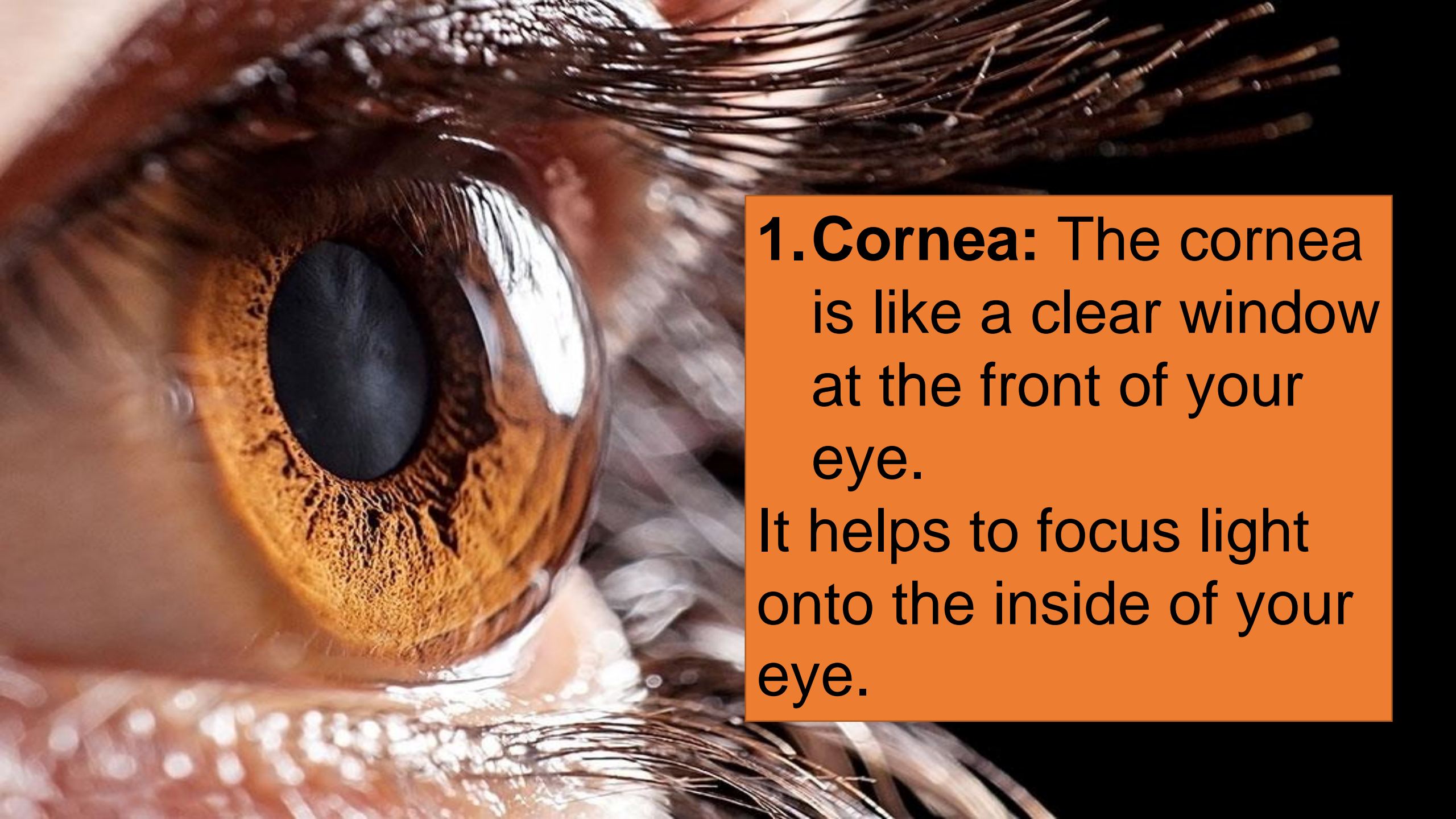
(viewed from above)





PEEK
a
BOO

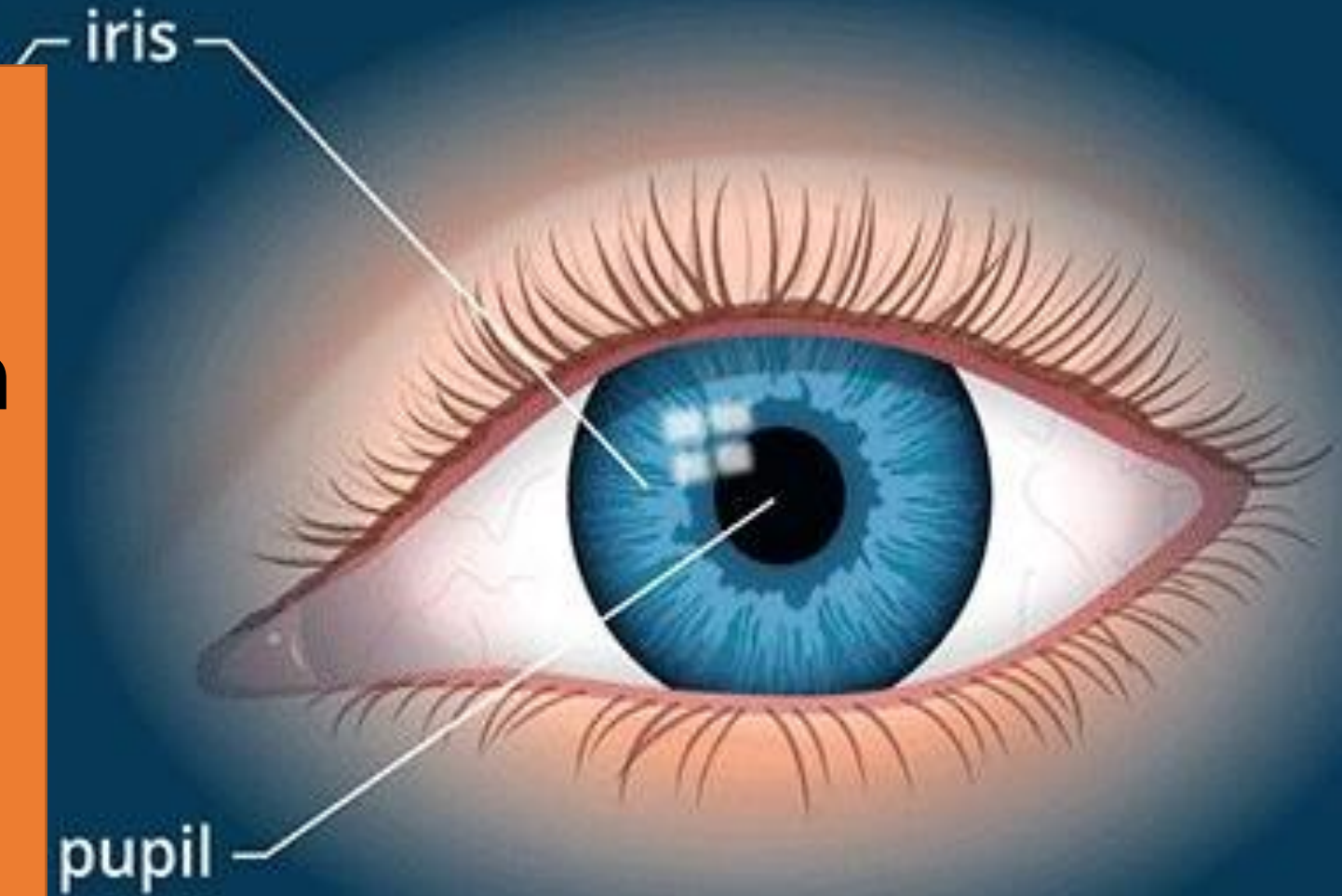
The image features a central logo on a bright yellow background with a sunburst pattern. The logo consists of the words "PEEK", "a", and "BOO" in a white, bubbly, 3D-style font. "PEEK" is on the top line, "a" is a small lowercase letter on the second line, and "BOO" is on the third line. The text is contained within a red, irregular, cloud-like shape that has a slight gradient and a drop shadow.



1. Cornea: The cornea is like a clear window at the front of your eye.

It helps to focus light onto the inside of your eye.

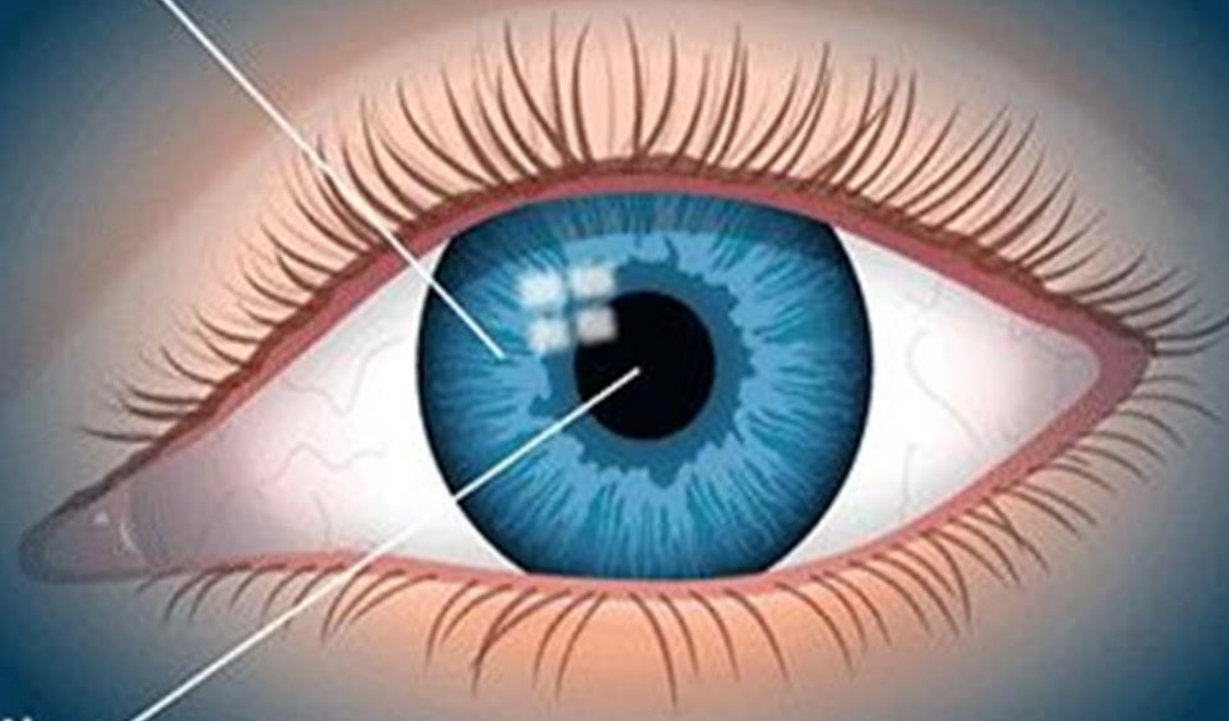
2. Iris: The iris is the colored part of your eye. It's like the curtain of the eye. It can open and close to control how much light enters the eye.



3. Pupil: The pupil is the black spot in the middle of your eye. It's a small hole that can get bigger or smaller to let in more or less light.

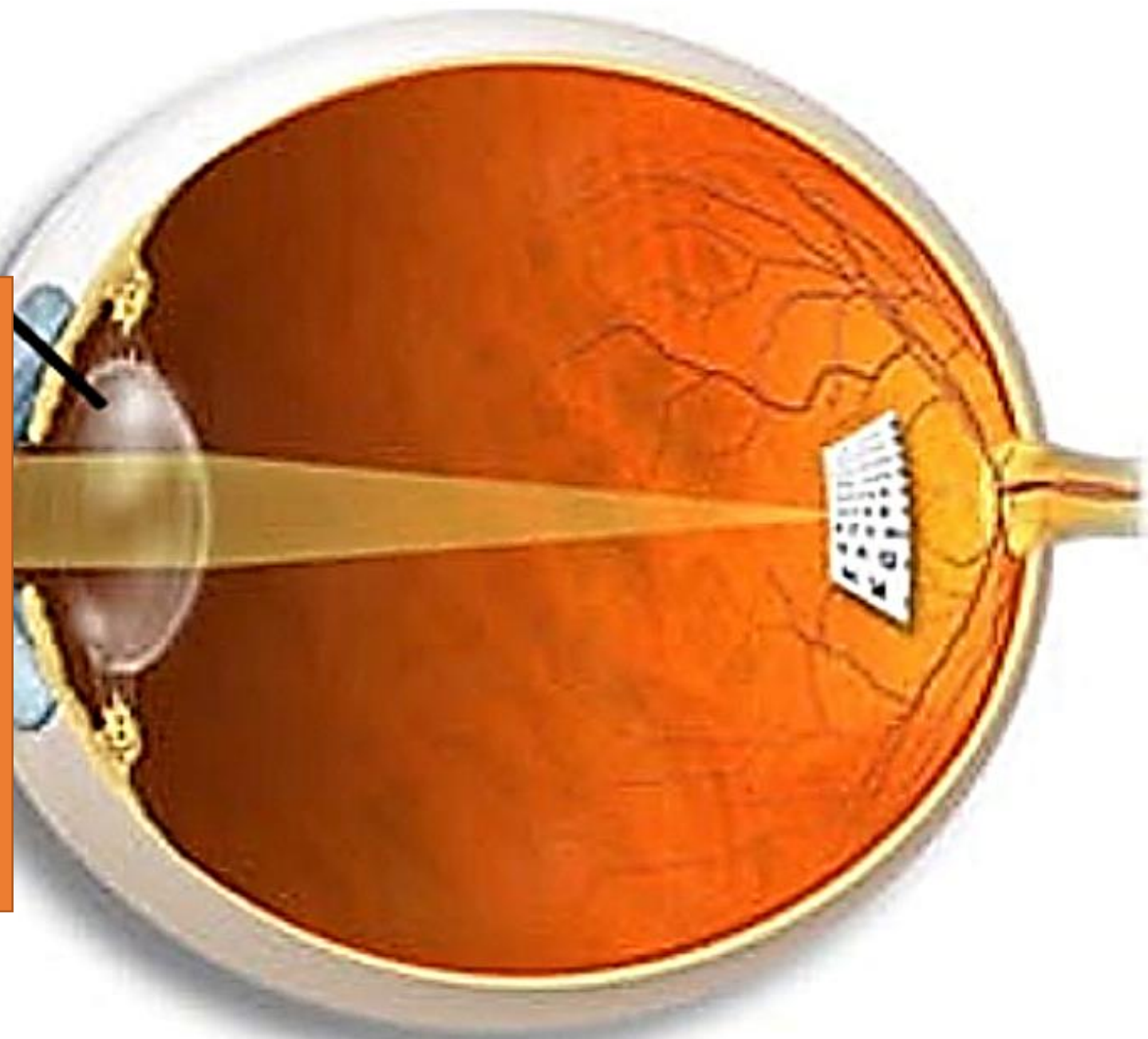
iris

pupil

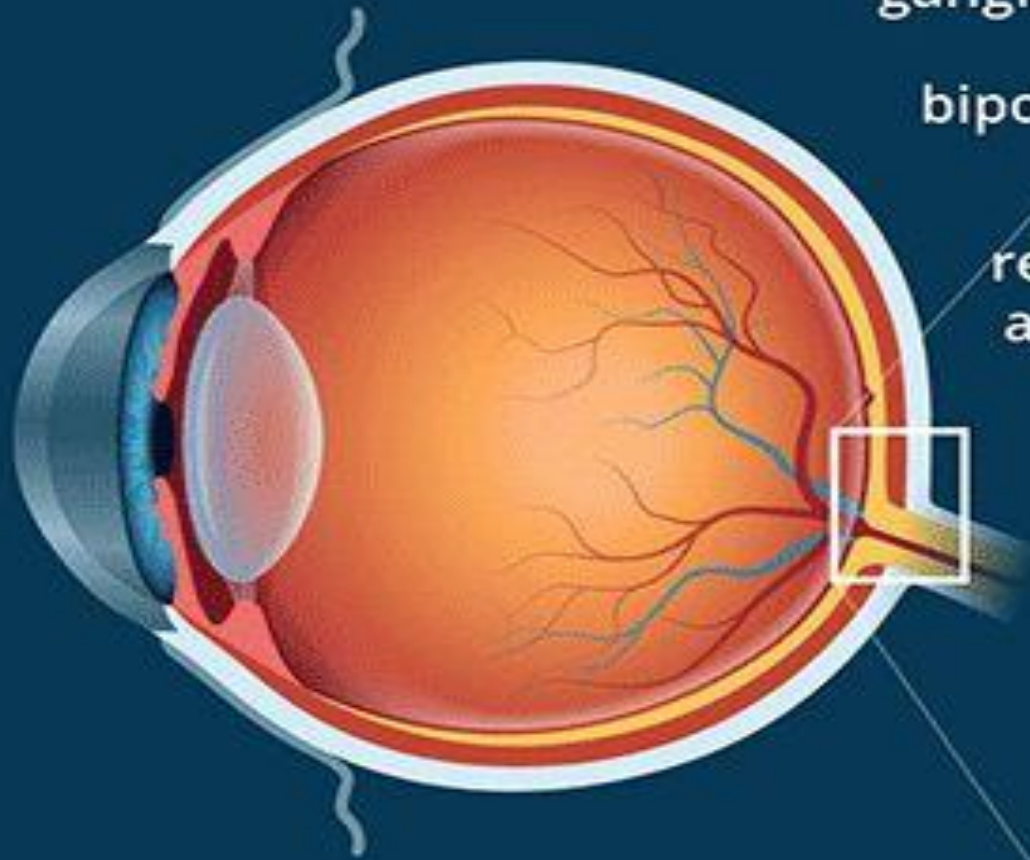


4. **Lens:** The lens is behind the pupil. It's like a little magnifying glass that helps to focus the light on the back of the eye.

LENS



Retina



ganglion cell

bipolar

retinal artery

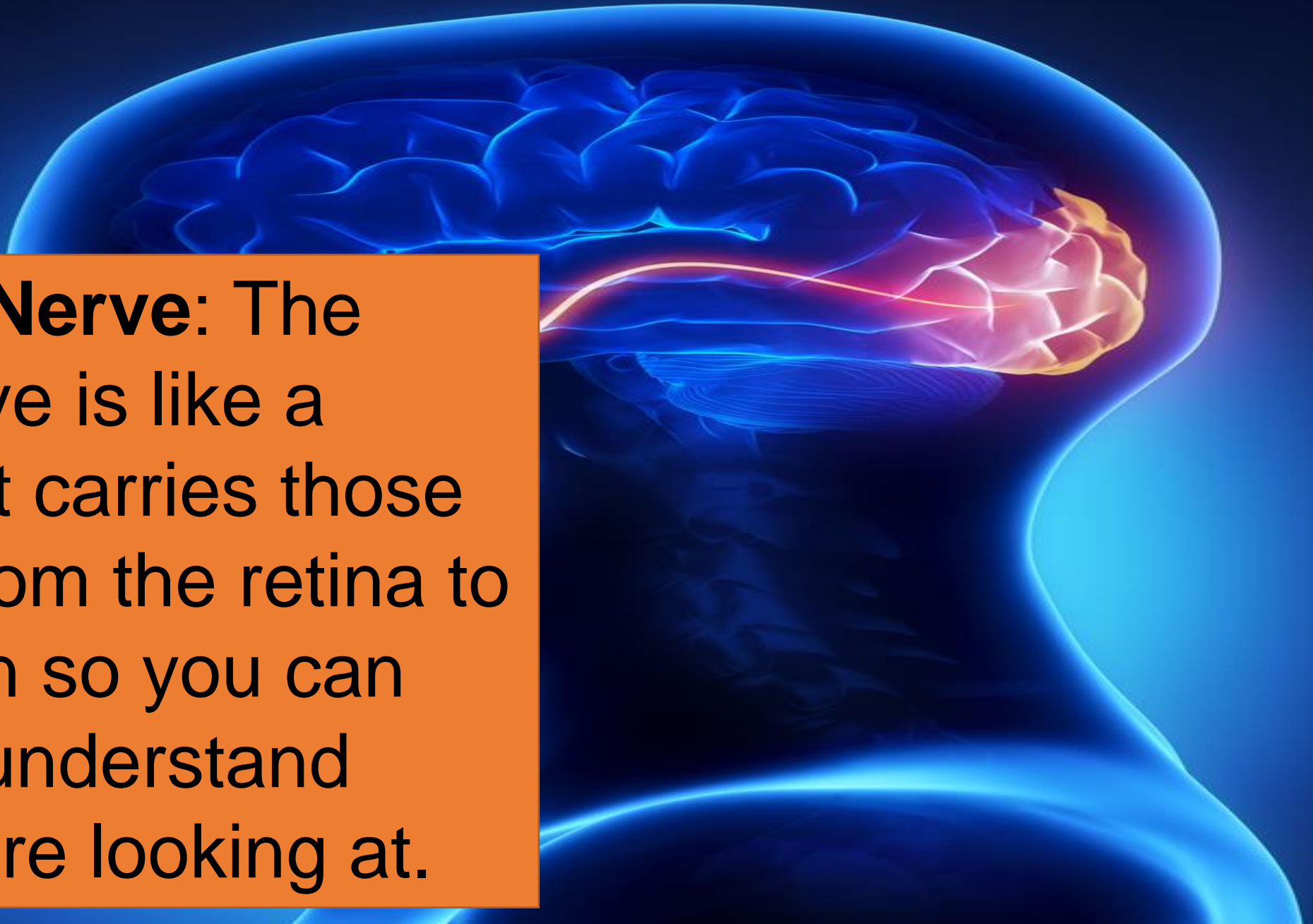
cone

rod

5. Retina: The retina is at the back of your eye. It's like a screen that collects the light and turns it into signals that go to your brain.

retinal pigment epithelium (RPE)

6. Optic Nerve: The optic nerve is like a cable that carries those signals from the retina to your brain so you can see and understand what you're looking at.





7. Sclera: The sclera is the white part of your eye. It's like the protective outer covering of your eye.