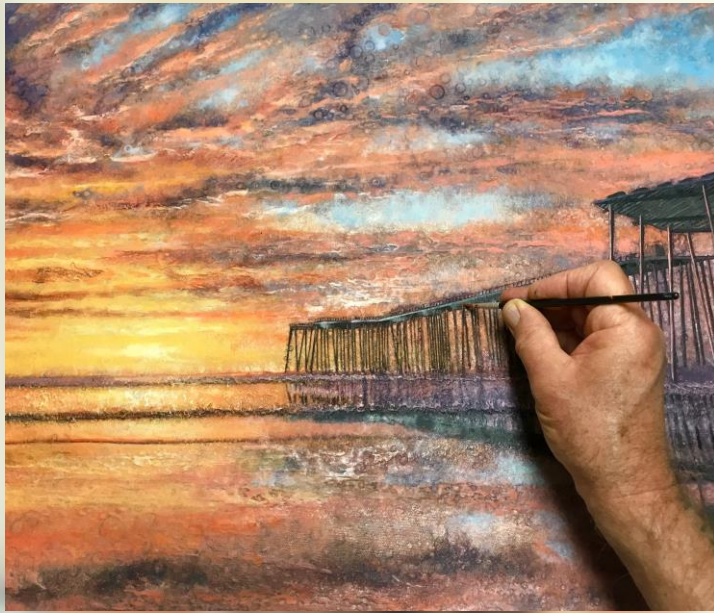


What time do you start the school in the morning?

What time do you finish school in the afternoon?

Which days of the week are you at school?

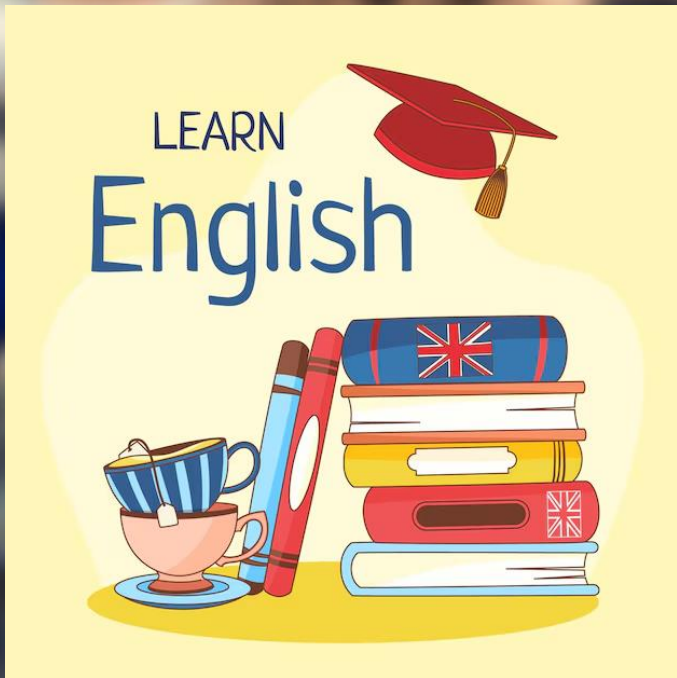
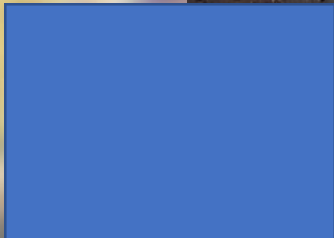




art



PE



English



history



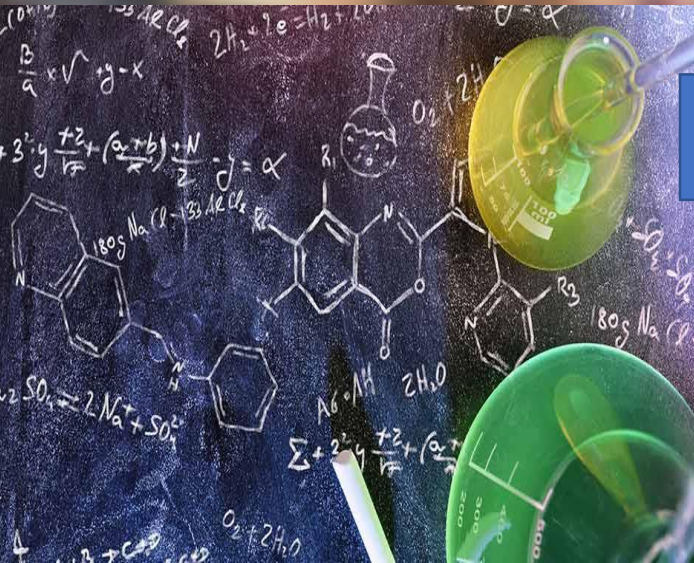
IT



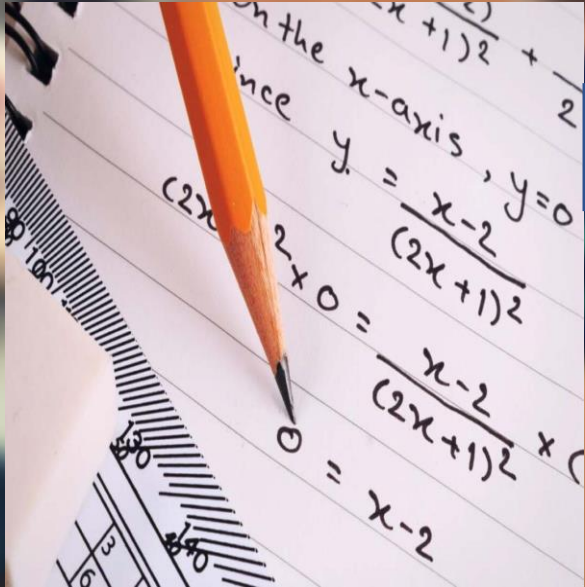
French



music



science



math



geography

8

AT SCHOOL



1 Match the school subjects to the pictures A-J.

EP

art	English	French	geography
history	IT	maths	music
PE	science		



71 Listen and check. Then repeat.

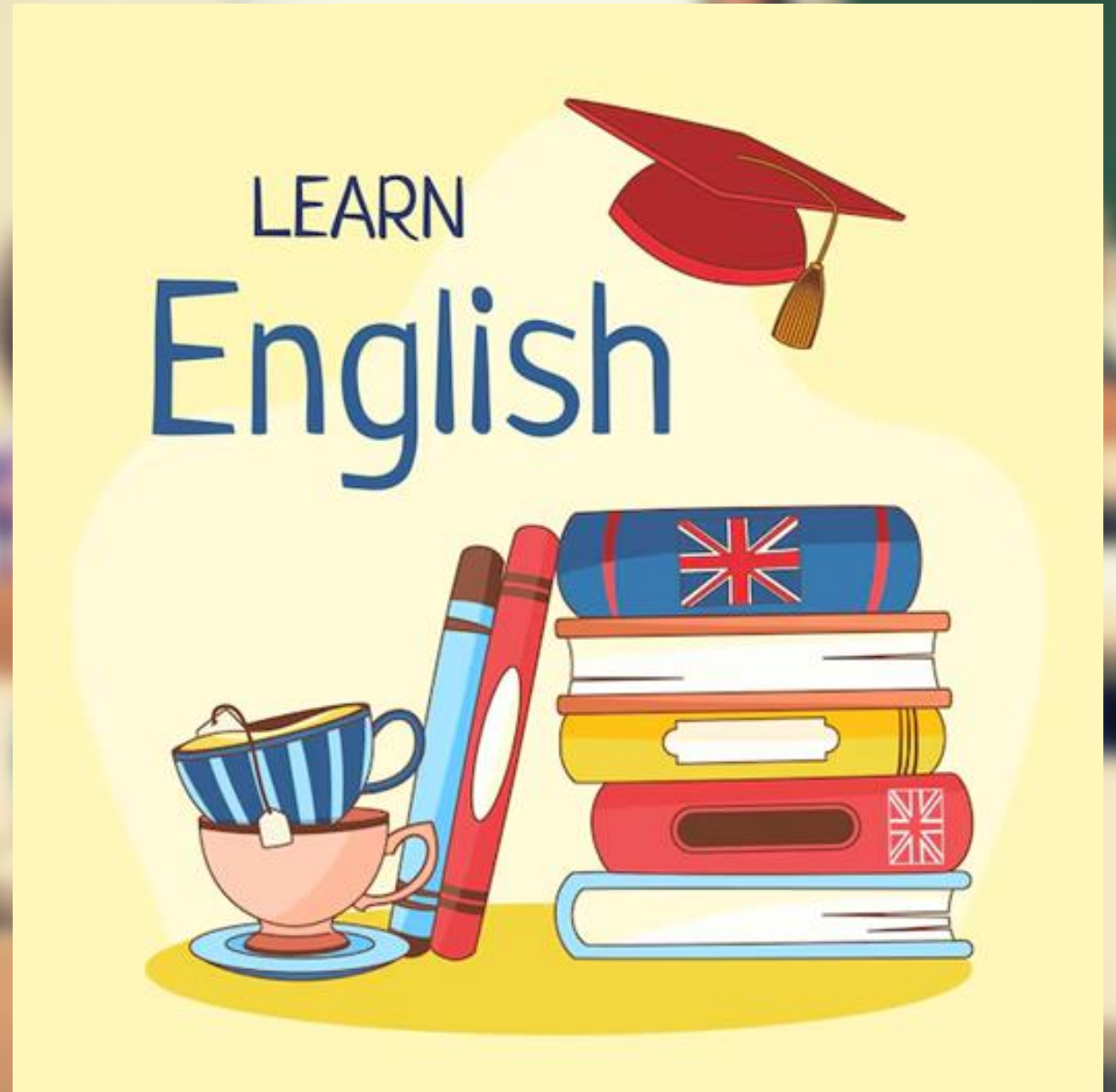
When is science?

It's 9 o'clock.



When is English?

It`s 11 o`clock.





Listen to the teacher talking about changes in the school timetable.
Write the subjects you hear.



timetable changes and complete the table.

	no change	new subject
Monday: double maths	✓	x
Tuesday: art		
Tuesday: IT		
Wednesday: maths		
Wednesday: PE		
Thursday: geography		





Science

Technology

Math

English

Art

History

What are your favorite school subjects?

We go to school everyday.

Do you go to school everyday?

Yes, I **do**.



I have geography in the morning.

Do you have geography in the afternoon?

No, I **don't**.



They watch cartoon everyday.

Do they watch cartoon everyday?

Yes, they do.



She **has** breakfast in the morning.

Does she **have** breakfast in the afternoon?

Yes, she **does**.



He washes the car.

Does he wash the car?

Yes, he does.



It has dinner.

Does it have lunch?

No, it doesn't.



GRAMMAR

Present simple ?

1 Look at the table and then choose the correct words to complete the sentences.

Do we have double maths in the morning? Do we have PE in the afternoon?	Yes, you do . No, you don't .
Does he teach art on another day? Does she teach music after school?	Yes, he does . No, she doesn't .
Do you play an instrument? Do they have English on Tuesday?	Yes, I/we do . No, they don't .

- 1 We use *do / does* to make questions and short answers with *he* and *she*.
- 2 We use *do / does* to make questions and short answers with *I, you, we*, and *they*.

2 Look at Lara's school timetable. Complete questions and answers 1-3.

0 **A:** *Does Lara have* geography on Tuesdays?

B: *Yes, she does*.

1 **A:** _____ science on Wednesdays?

B: _____.

2 **A:** _____ art on Fridays?

B: _____.

3 **A:** _____ history on Mondays?

B: _____.

Now answer questions 4-5 with information about you.

4 **A:** Do you have English on Thursdays?

B: _____.

5 **A:** Do you have maths on Wednesdays?

B: _____.

3 Make questions. Then ask and answer with your partner.

0 you / go to school / on Saturdays / ?

A: *Do you go to school on Saturdays?*

B: *Yes, I do.*

1 you / do homework / in the morning / ?

2 you / understand / your maths lesson / ?

3 you / use IT / in English lessons / ?

4 your dad / help you / with homework / ?

5 your school / have / a photo club / ?

6 your teacher / walk / to school / ?

7 your friend / like / PE / ?

8 your mum and dad / speak / English / ?



Listen and check. Then repeat.

73



NAME: **LARA**

	MONDAY	TUESDAY	WEDNESDAY	THURSDAY	FRIDAY
09.15	science	art	IT	geography	PE
10.05	art	music	English	maths	science
BREAK					
11.20	history	PE	history	science	maths
LUNCH					
13.30	English	geography	maths	music	IT
14.20	French	history	maths	PE	science