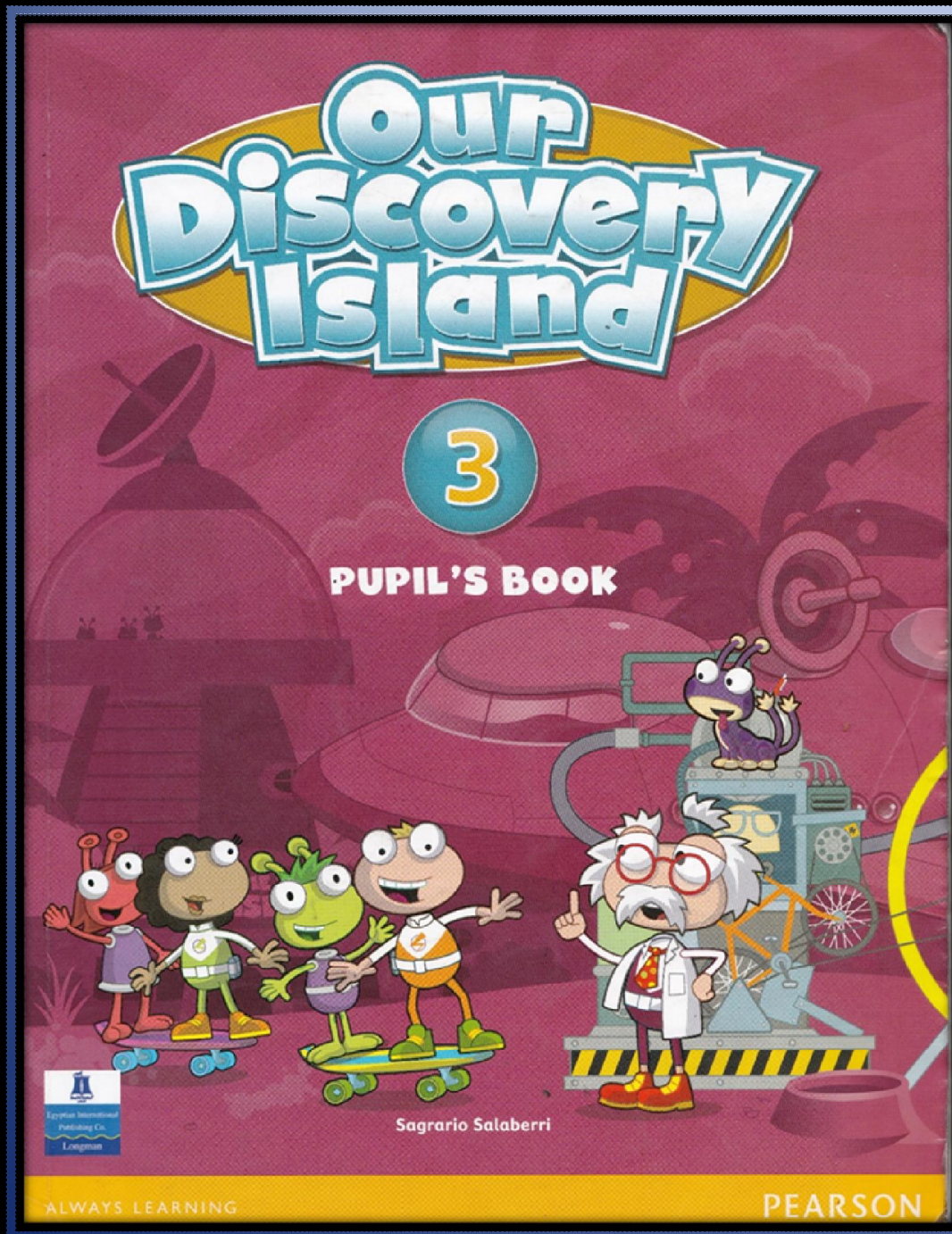


Alavi

ODI 3

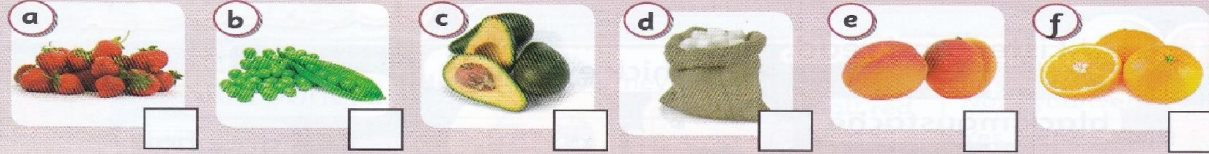
(Page 21)

Alavi Primary Schools
(Emamat Branch)
Department Of English



Vocabulary

23  Listen and number the pictures in order.



Grammar


24 Look and say.



There are some cherries.

Are there any plums?

Phonics

25  Listen and circle. Then listen and repeat.

- | | | | |
|--------------|---------------|----------------|---------------|
| 1 year / ear | 2 hair / hear | 3 tear / fair | 4 pair / tear |
| 5 near / ear | 6 tear / year | 7 chair / fair | 8 pair / hair |

I CAN

I can talk about food.

I know about a food pyramid and food around the world.



AB p.104

Vocabulary

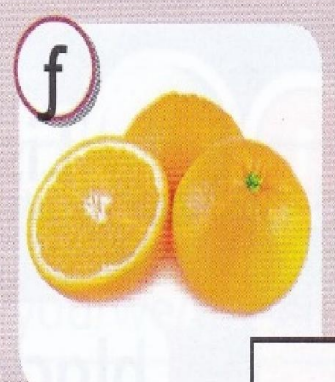
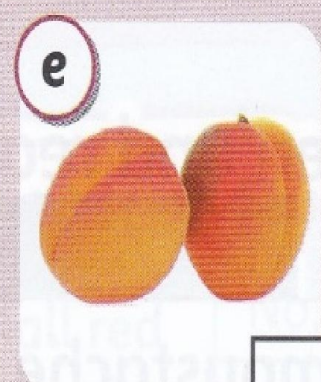
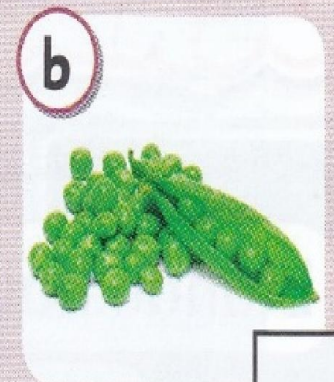
PROGRESS CHECK



23



Listen and number the pictures in order.



Vocabulary

PROGRESS CHECK

23



Listen and number the pictures in order.



4



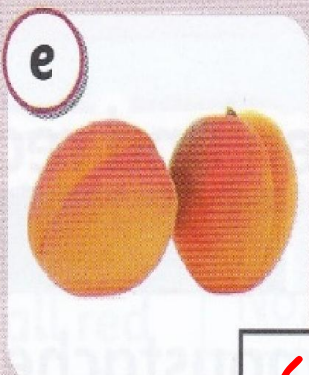
1



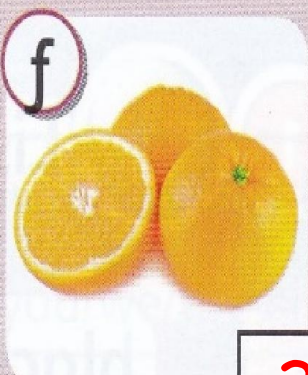
5



2



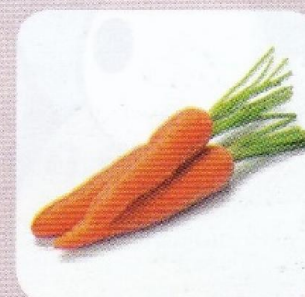
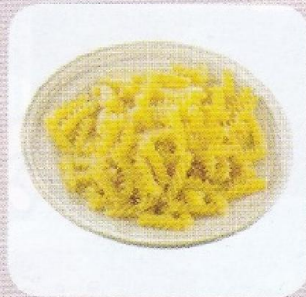
6



3

Grammar

24 Look and say.



There are some cherries.

Are there any plums?

Phonics



25



Listen and circle. Then listen and repeat.

1 year / ear

2 hair / hear

3 tear / fair

4 pair / tear

5 near / ear

6 tear / year

7 chair / fair

8 pair / hair

Phonics

25



Listen and circle. Then listen and repeat.

1 year / ear

2 hair / hear

3 tear / fair

4 pair / tear

5 near / ear

6 tear / year

7 chair / fair

8 pair / hair

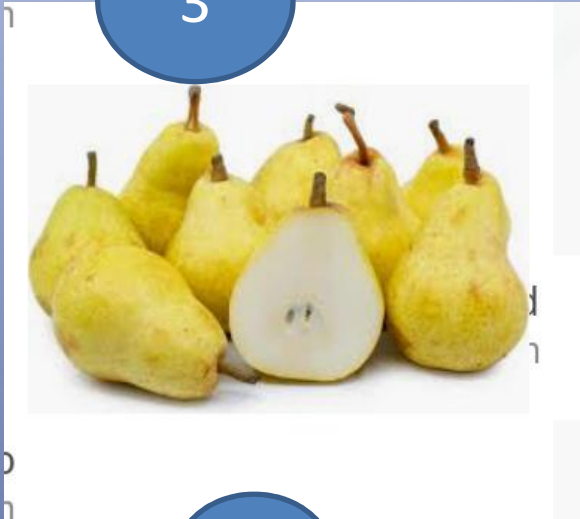
Speaking time: make a complete sentence with each picture.

There is...
There are ...

1



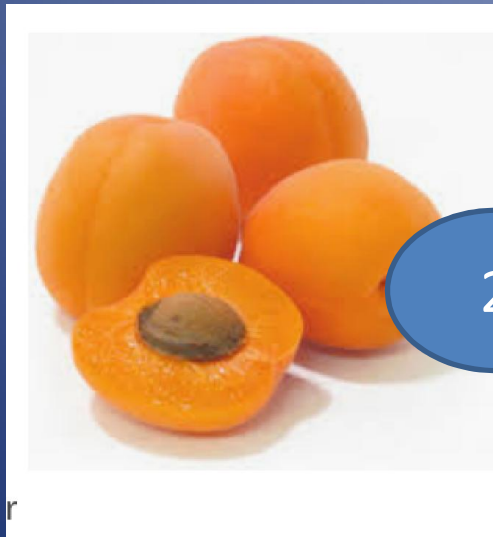
3



5



2



4



6



Ask a question. Then ask a friend to answer it.

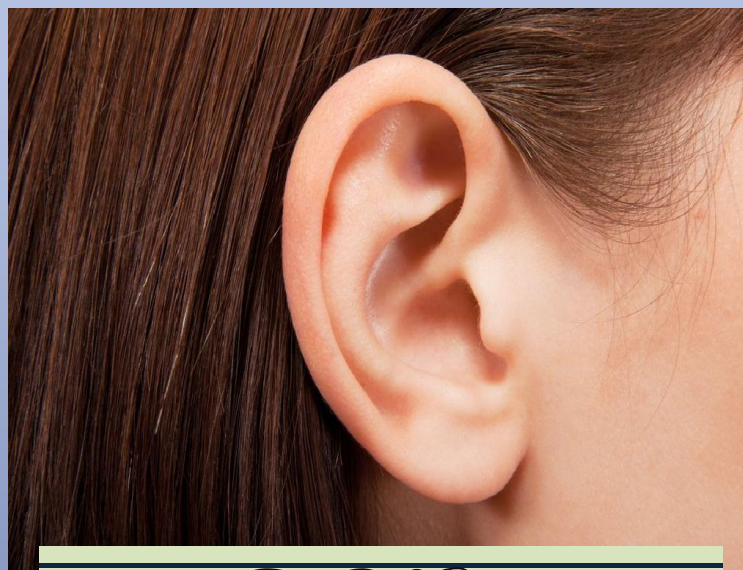


..... there any flour?





tear



ear

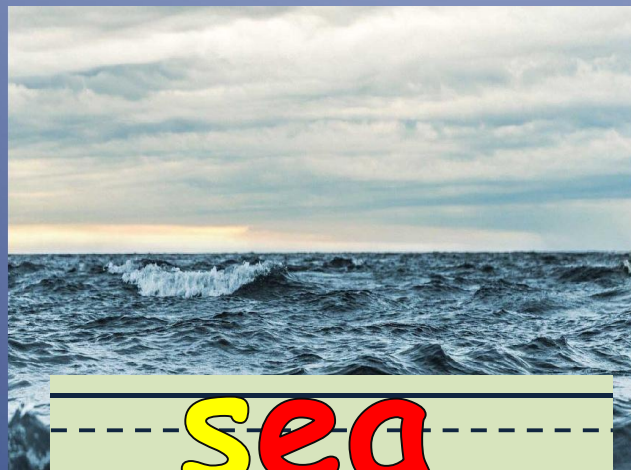


chair

2020

JANUARY	FEBRUARY	MARCH	APRIL
S M T W T F S 1 2 3 4 5 6 7 8 9 10 11 12 13 14 15 16 17 18 19 20 21 22 23 24 25 26 27 28 29 30 31	S M T W T F S 1 2 3 4 5 6 7 8 9 10 11 12 13 14 15 16 17 18 19 20 21 22 23 24 25 26 27 28 29	S M T W T F S 1 2 3 4 5 6 7 8 9 10 11 12 13 14 15 16 17 18 19 20 21 22 23 24 25 26 27 28 29 30 31	S M T W T F S 1 2 3 4 5 6 7 8 9 10 11 12 13 14 15 16 17 18 19 20 21 22 23 24 25 26 27 28 29 30 31
MAY	JUNE	JULY	AUGUST
S M T W T F S 1 2 3 4 5 6 7 8 9 10 11 12 13 14 15 16 17 18 19 20 21 22 23 24 25 26 27 28 29 30 31	S M T W T F S 1 2 3 4 5 6 7 8 9 10 11 12 13 14 15 16 17 18 19 20 21 22 23 24 25 26 27 28 29 30 31	S M T W T F S 1 2 3 4 5 6 7 8 9 10 11 12 13 14 15 16 17 18 19 20 21 22 23 24 25 26 27 28 29 30 31	S M T W T F S 1 2 3 4 5 6 7 8 9 10 11 12 13 14 15 16 17 18 19 20 21 22 23 24 25 26 27 28 29 30 31
SEPTEMBER	OCTOBER	NOVEMBER	DECEMBER
S M T W T F S 1 2 3 4 5 6 7 8 9 10 11 12 13 14 15 16 17 18 19 20 21 22 23 24 25 26 27 28 29 30	S M T W T F S 1 2 3 4 5 6 7 8 9 10 11 12 13 14 15 16 17 18 19 20 21 22 23 24 25 26 27 28 29 30 31	S M T W T F S 1 2 3 4 5 6 7 8 9 10 11 12 13 14 15 16 17 18 19 20 21 22 23 24 25 26 27 28 29 30	S M T W T F S 1 2 3 4 5 6 7 8 9 10 11 12 13 14 15 16 17 18 19 20 21 22 23 24 25 26 27 28 29 30 31

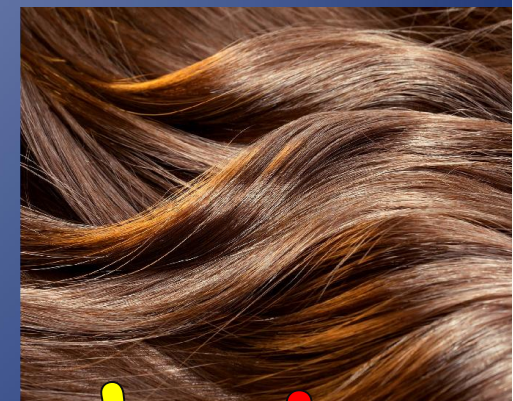
year



sea



meat



hair



1



2



3



4



5

fruit and vegetables

fats and sugar

dairy

protein

cereals



Bye