

ie

"Help! Quick! Get me out of here! hissed Snake, still trapped in the top of the tree. Inky saluted and said, "ie, ie, Captain! That's what sailors say when they've been given an order." Bee cried, "ie, ie, Captain!" and stood to attention, saluting.

Colour
the
picture!



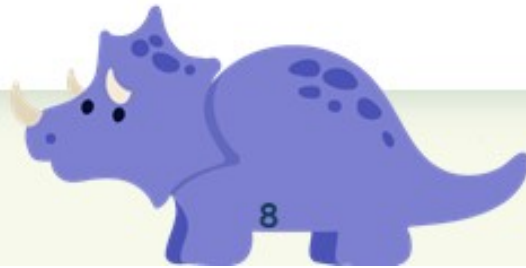
ie

ie



Action

Stand to attention and salute, saying *ie, ie!*



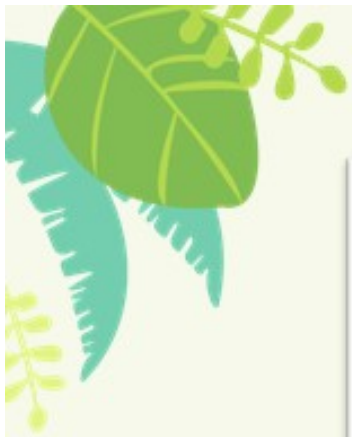
and
letters.

ie ie ie
ie ie ie

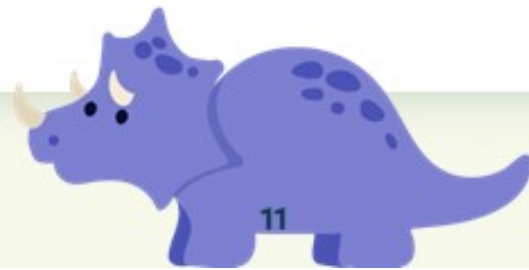
Inky says,
"Try writing
joined
letters!"

 **Tips for Parents**
When joining 'i' and 'e', write the 'i' as usual then take the joining
tail up and across to start the 'e'.

19



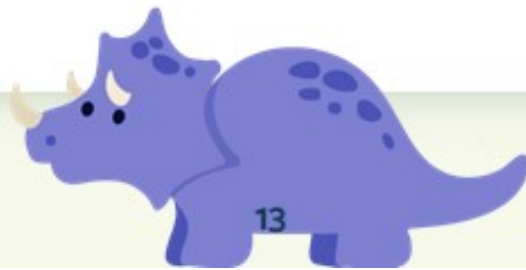
pie



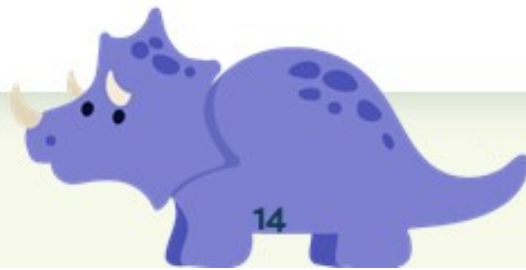
tie



die



lie







Vowel Forest

NOW YOU CAN
Colour the leaves of the tree that have 'ie' in them.

The tree contains the following vowel digraphs in its leaves:

- Row 1: ie, ai, i, ie, ai
- Row 2: ie, oa, ie, oa
- Row 3: ie, a, e, i, e
- Row 4: oa, i, oa, ie, ai
- Row 5: ie, a, oa, e, oa
- Row 6: o, ai, e, ie, e, oa
- Row 7: ie, oa, ie, i, oa, ie
- Row 8: e, i, ie, ie, oa, ie
- Row 9: ie, ai, e, ai, ie
- Row 10: u

20







b e





be sad





be happy





- be mad -





be fit





be fast

