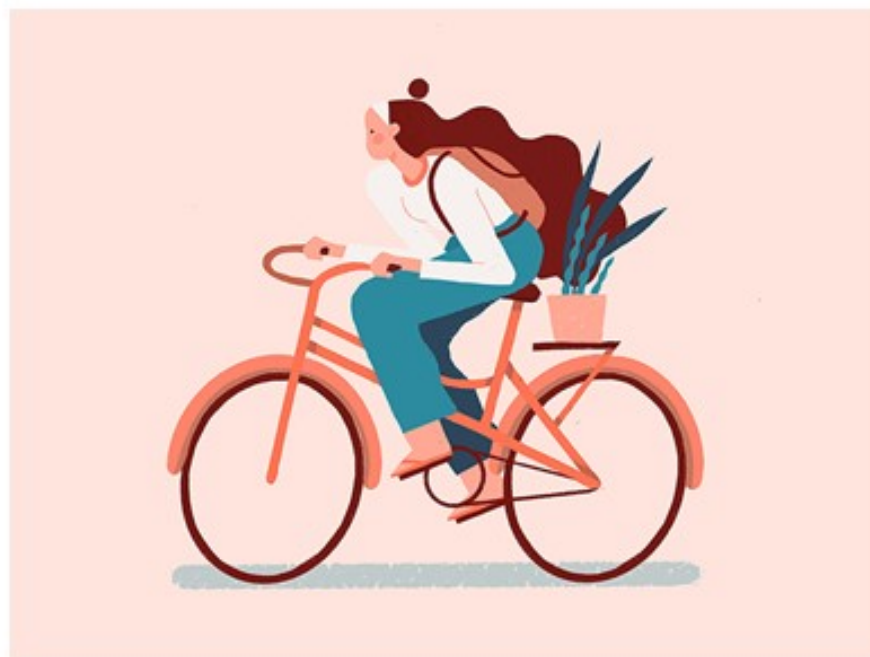


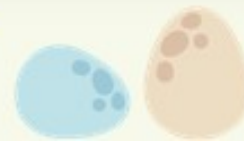
ie



ie



lie





ie

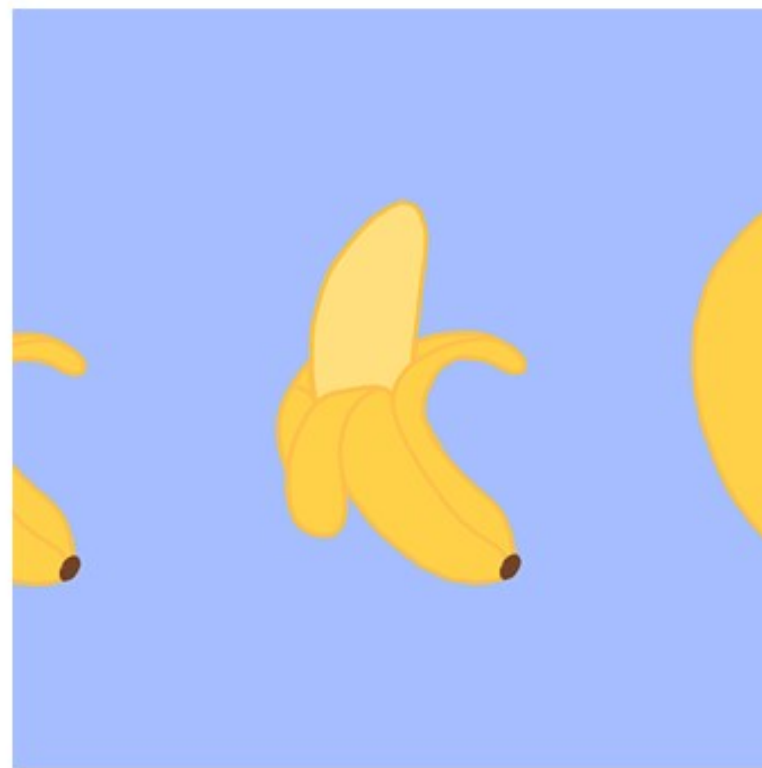


9



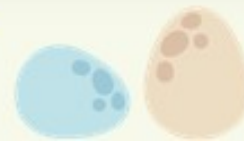
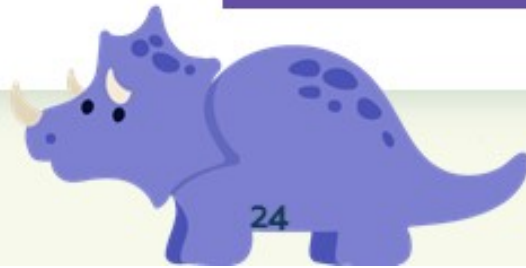


i e



i e

Life





ie



25



i e





i e





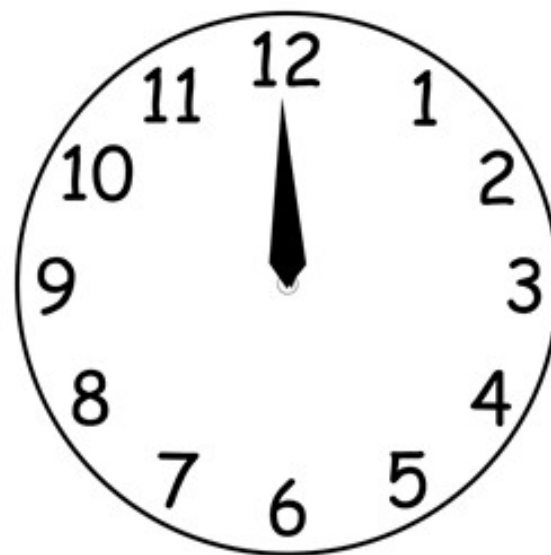
i e

A handwriting practice section featuring a set of three horizontal lines: a solid top line, a dashed middle line, and a solid bottom line. The letter 'i' is written in red, starting from a red dot on the middle line, going down to the bottom line, and having a yellow arch above it. The letter 'e' is also in red, starting from the middle line, going down to the bottom line, and having a black top hat on its top curve. A red underline is positioned below the 'i'.





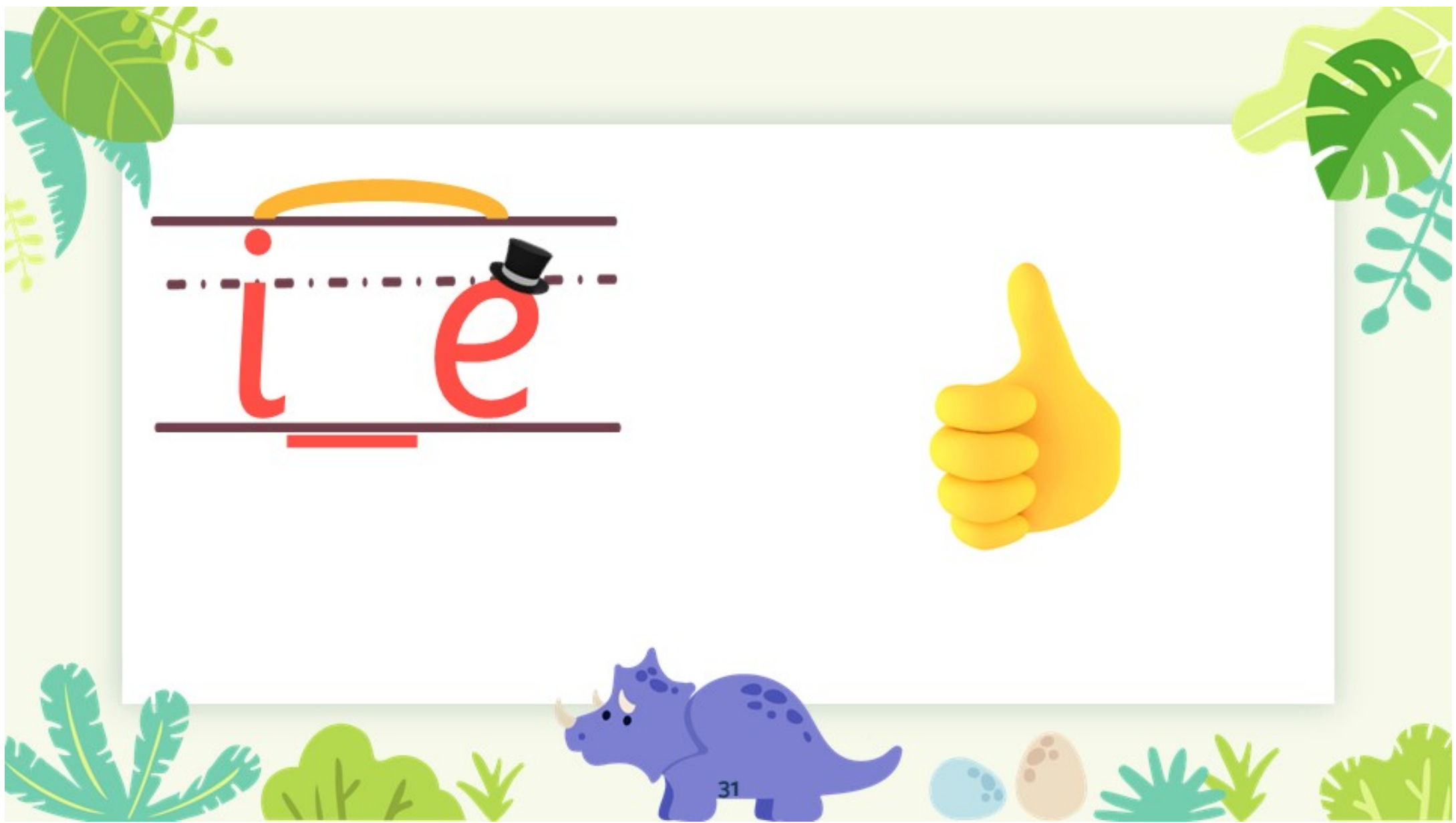
i e



i e



i e



ie



ie

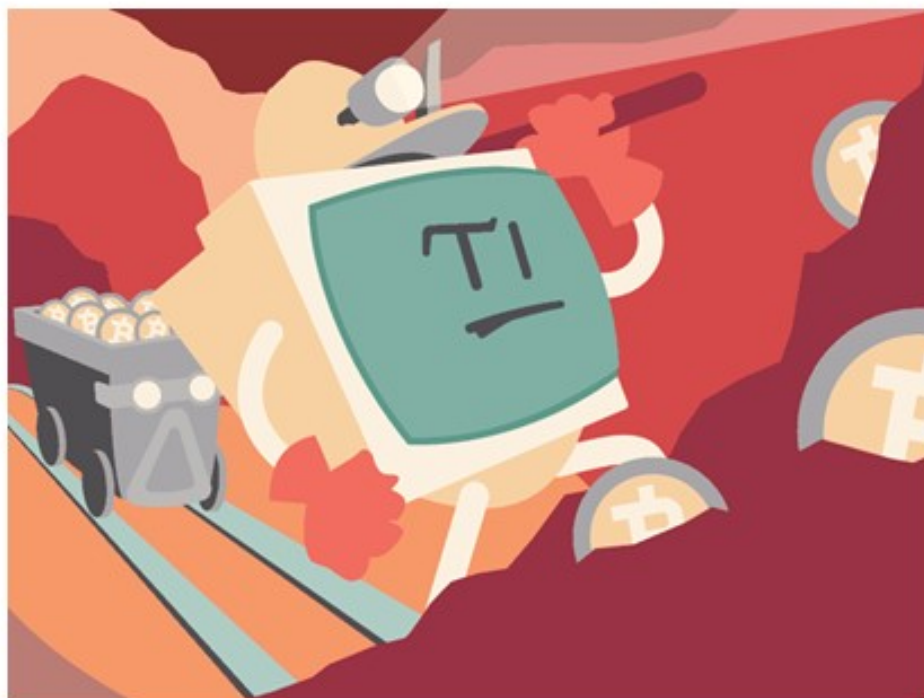


ie

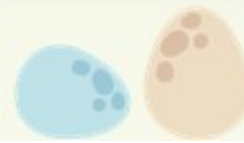
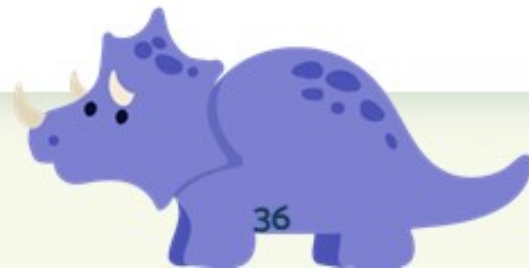




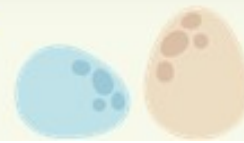
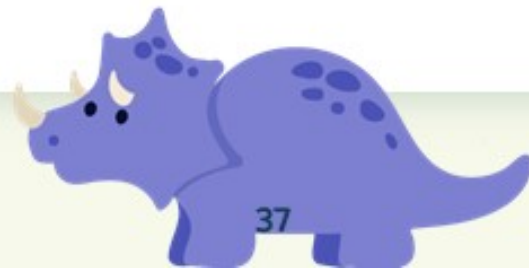
ie



lie



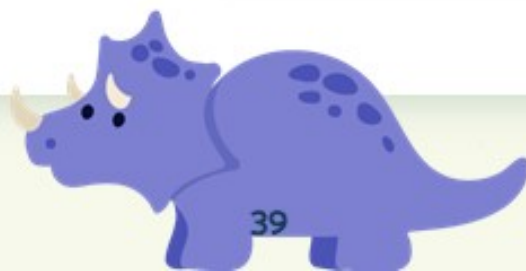
ie



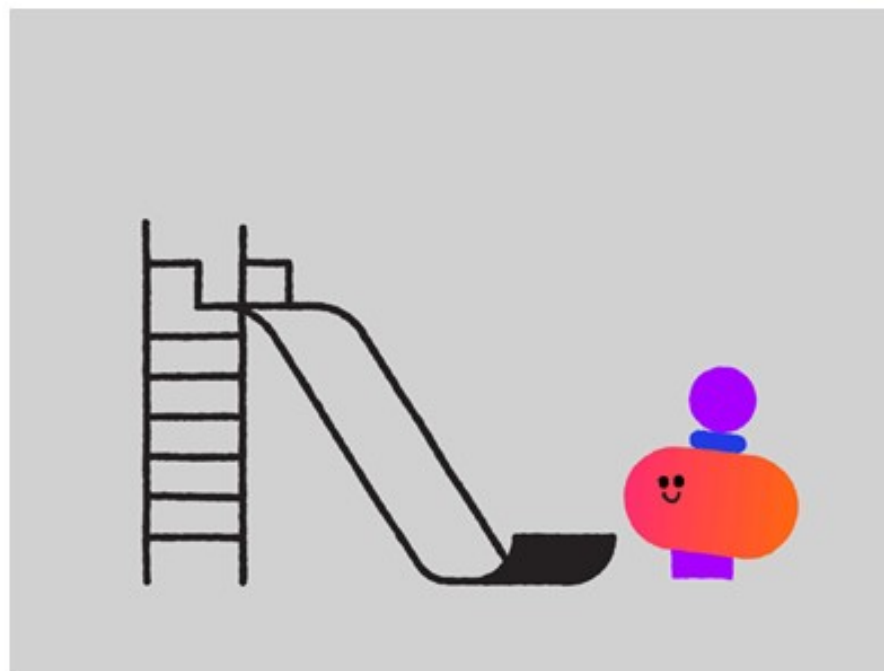
i e



ie



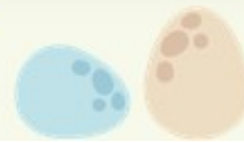
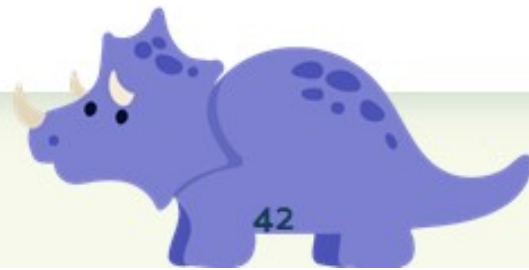
i e



i e



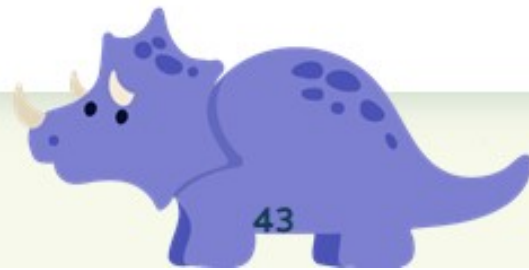
ie







i e



lie

