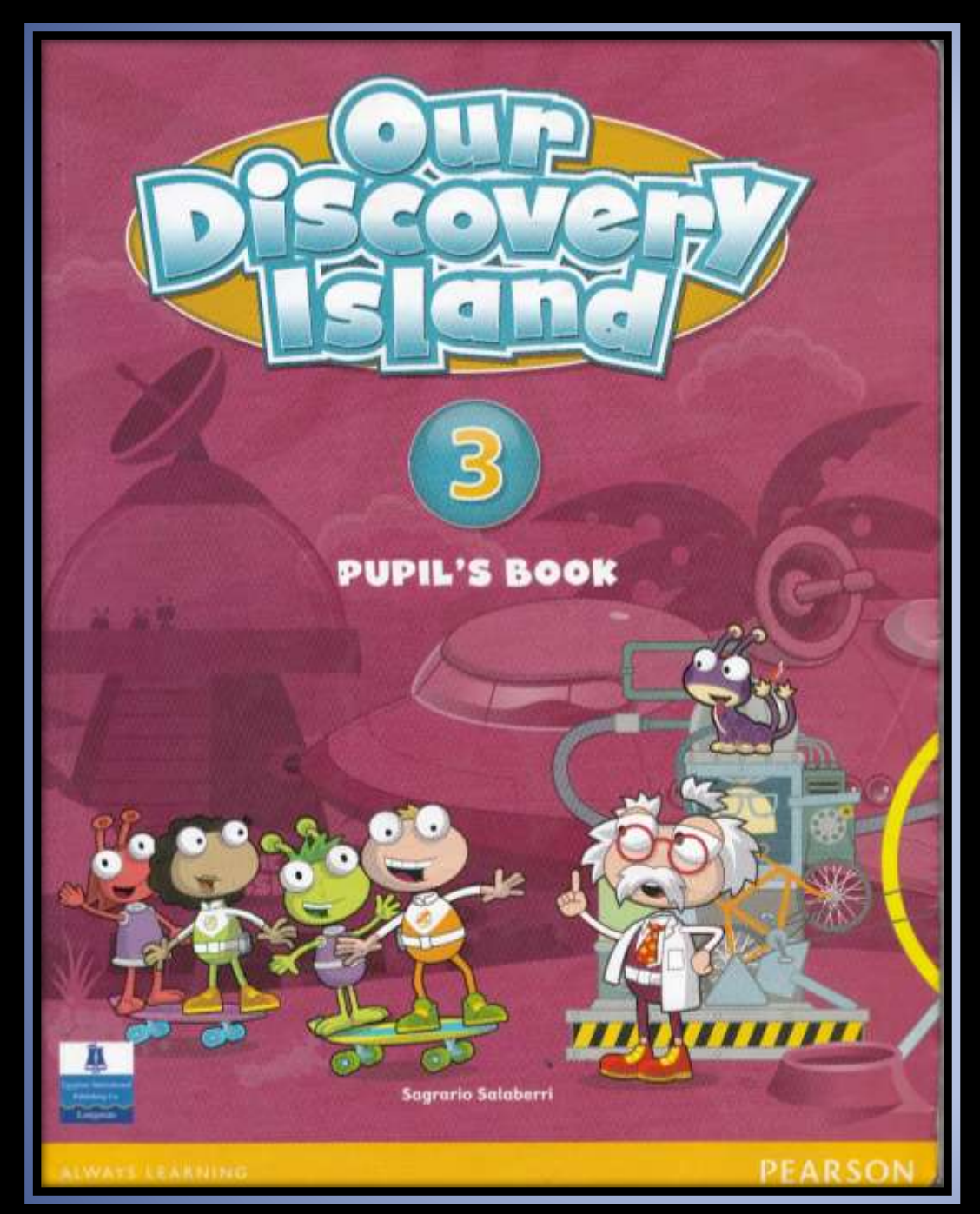


Alavi

ODI 3

(page 75)

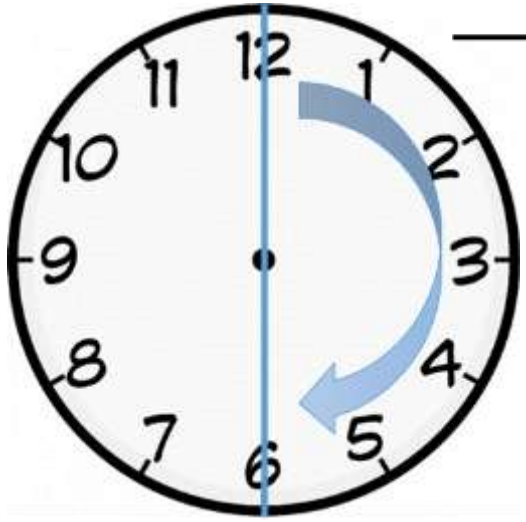
Alavi Primary Schools
(Emamat Branch)
Department Of English

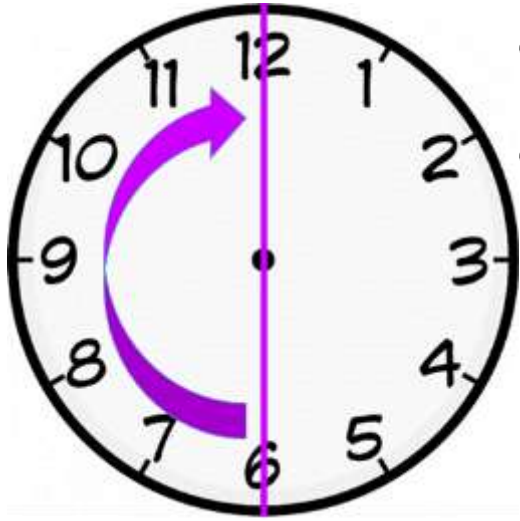


HELLO



in the afternoon





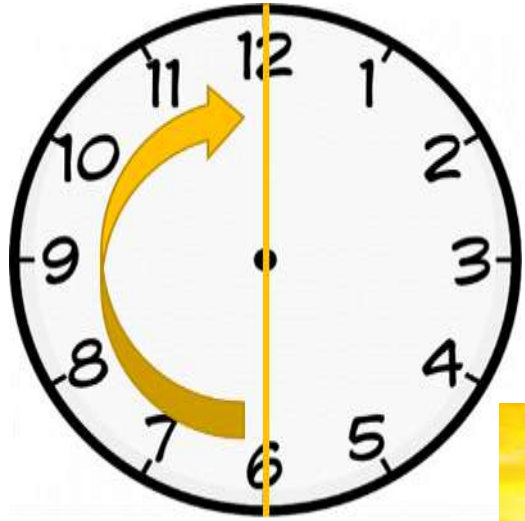
in the evening





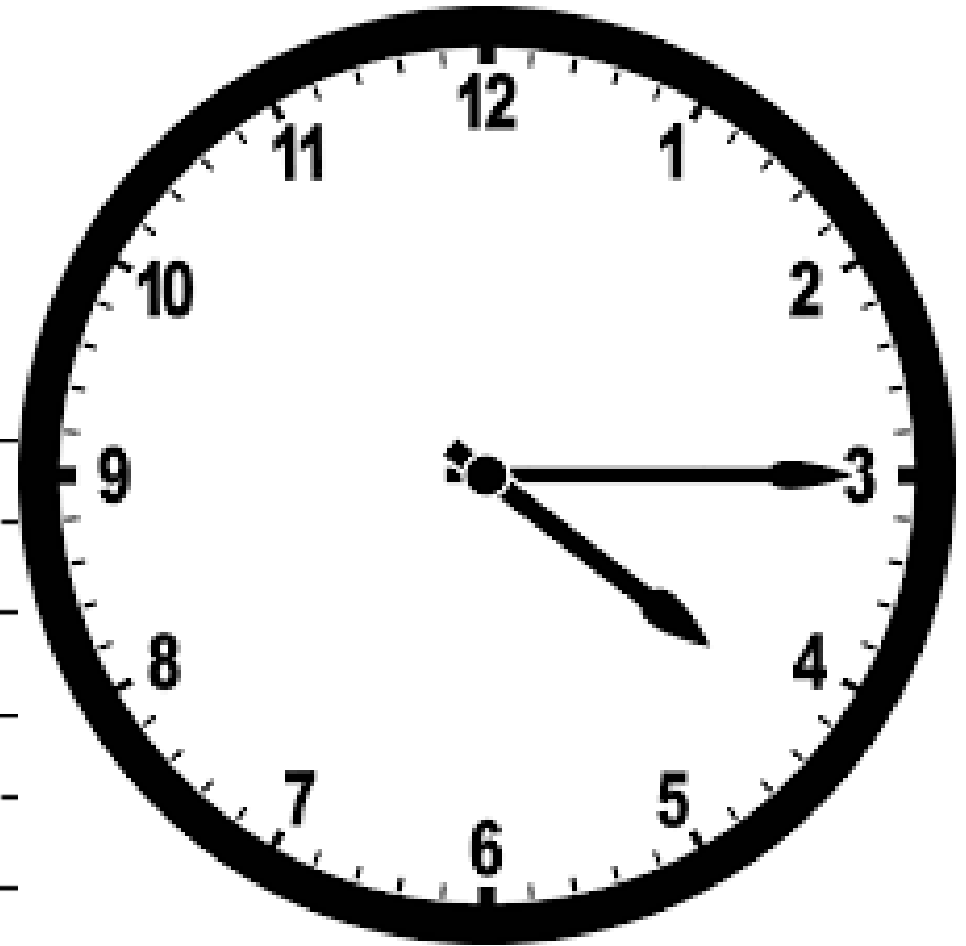
at midday





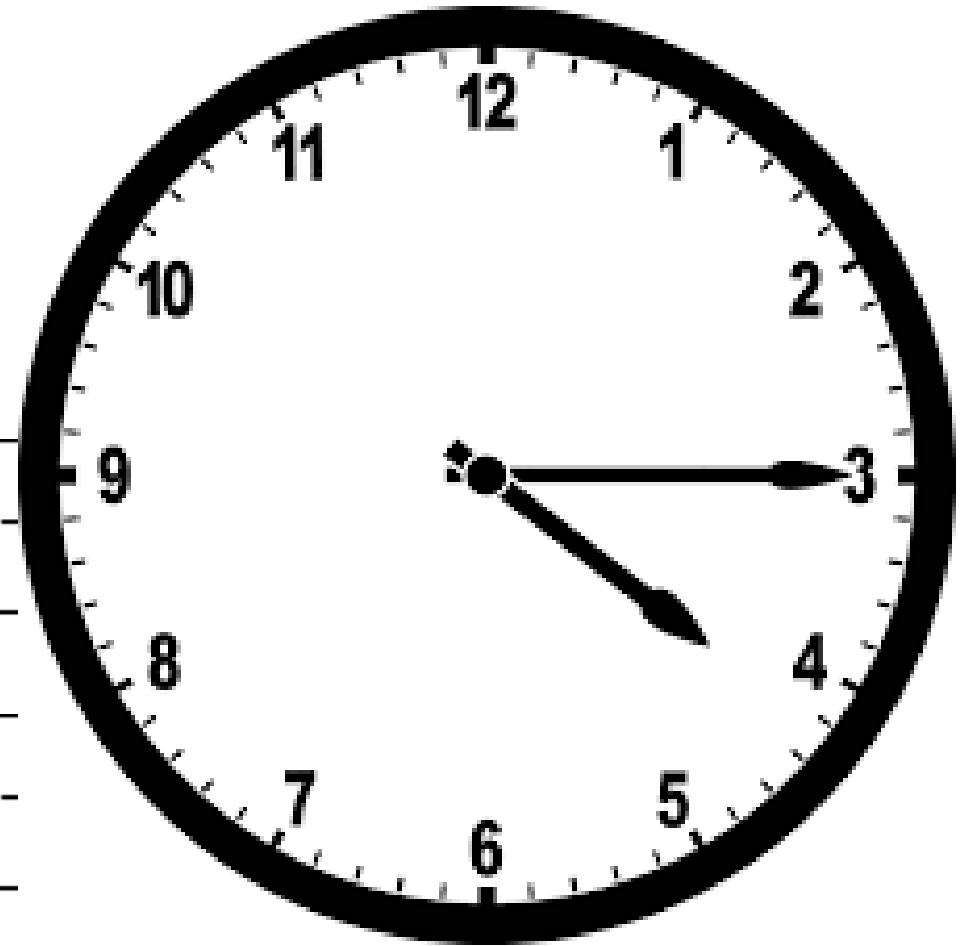
in the morning





Four horizontal lines for writing, consisting of two solid outer lines and two dashed inner lines.

It's a quarter
past four.

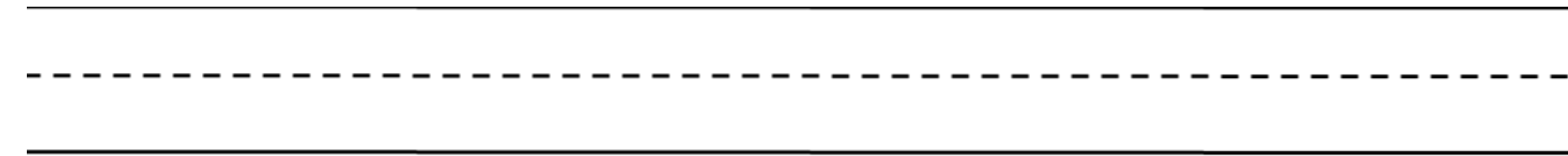
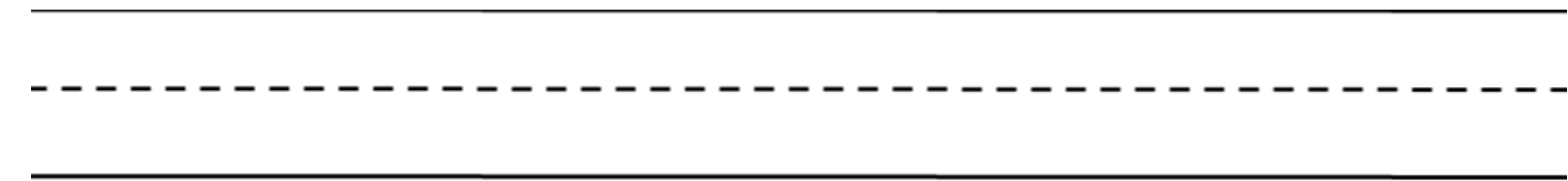






It's half

past eight.





It's a quarter

to eight.





It's half

past one.

page

75

Hello, my friends.

Do you remember me?

Today, I want to continue
interviewing and ask
some questions...



What time do you study Maths?



I study Maths at 4:30 on Wednesday.



How often do you study Maths?



I usually study Maths in the morning.



What time do you practise the violin?



I practise the violin at 2:45 in the afternoon.



How often do you practice the violin?



I usually practice the violin in the morning.



What time does she see her friend?



She sees her friend at 10:00 in the morning.



How often does she see her friend?



She always sees her friend at the weekend.



What time does she play the piano?



She plays the piano at 4.45.



How often does she play the piano



She usually plays the piano in the afternoon.



What time

at ...
(time)

How often

always
usually
often
never

100%

always

I always study.

80%

usually

I usually play.

50%

often

I often sing.

0%

never

I never dance.

Study

Play

sing

dance

	Sat.	Sun.	Mon.	Tue.	Wed.	Thur.	Fri.
Study	◆	◆	◆	◆	◆	◆	◆
Play		◆	◆		◆	◆	◆
sing	◆		◆		◆		
dance							

Choose the correct option.

1.A) I study Maths usually. B)I usually study Maths

2.A) She often play the piano. B)She often plays the piano.

3.A) They always don't practice the violin.
B) They don't always practice the violin.

4.A) We do gymnastics on 7. B) We do gymnastics at 7.

do you have music lessons?



We have music lessons at 7:00 in the evening.



do you practise the piano?



I often practise the piano in the morning.





8



Listen and read. Then read and say *True* or *False*.

When did Fifi learn to dance?



When she was seven. She had ballet lessons every Sunday.

When does she have ballet lessons now?

She always has ballet lessons on Sunday and Monday. She has lessons at 10.00 on Sunday and at 5.30 on Monday.

How often does she walk to her ballet lessons?
What time does she go to her ballet lessons?

She never walks to her ballet lessons. She always goes by car. She goes to her ballet lessons at 9.45 on Sunday and at 5.15 on Monday.



How often does she see her friends?

She always sees her friends at the weekend. She often goes to a party with her friends. She usually walks in the park with her friends too.





Listen and read. Then read and say *True* or *False*.

When did Fifi learn to dance?



When she was seven. She had ballet lessons every Sunday.

When does she have ballet lessons now?

She always has ballet lessons on Sunday and Monday. She has lessons at 10.00 on Sunday and at 5.30 on Monday.

How often does she walk to her ballet lessons?
What time does she go to her ballet lessons?

She never walks to her ballet lessons. She always goes by car. She goes to her ballet lessons at 9.45 on Sunday and at 5.15 on Monday.



How often does she see her friends?

She always sees her friends at the weekend. She often goes to a party with her friends. She usually walks in the park with her friends too.



- 1 Fifi learnt to dance when she was seven. **True**
- 2 Fifi always has ballet lessons on Saturday now. **False**
- 3 She usually walks to her ballet lessons. **False**
- 4 She always sees her friends at the weekend. **True**

TIP!

always	✓✓✓✓
usually	✓✓✓
often	✓✓
never	✗

Question :

does/karate/What/do/time/she/?

Answer :

(4:45 /afternoon)

Question :

does/karate/What/do/time/she/?

What time does she do karate?

Answer :

(4:45 /afternoon)

Question :

does/karate/What/do/time/she/?

What time does she do karate?

Answer :

She does karate at 4:45

in the afternoon.

(4:45 /afternoon)

Question :

they/How/English/do/study/often/?

Answer :

(usually/morning)

Question :

they/How/English/do/study/often/?

How often do they study English?

Answer :

(usually/morning)

Question :

they/How/English/do/study/often/?

How often do they study English?

Answer :

They usually study English

in the morning.

(usually/morning)

Look at the pictures
and ask your friends.

Use:

"What time/How often...?"

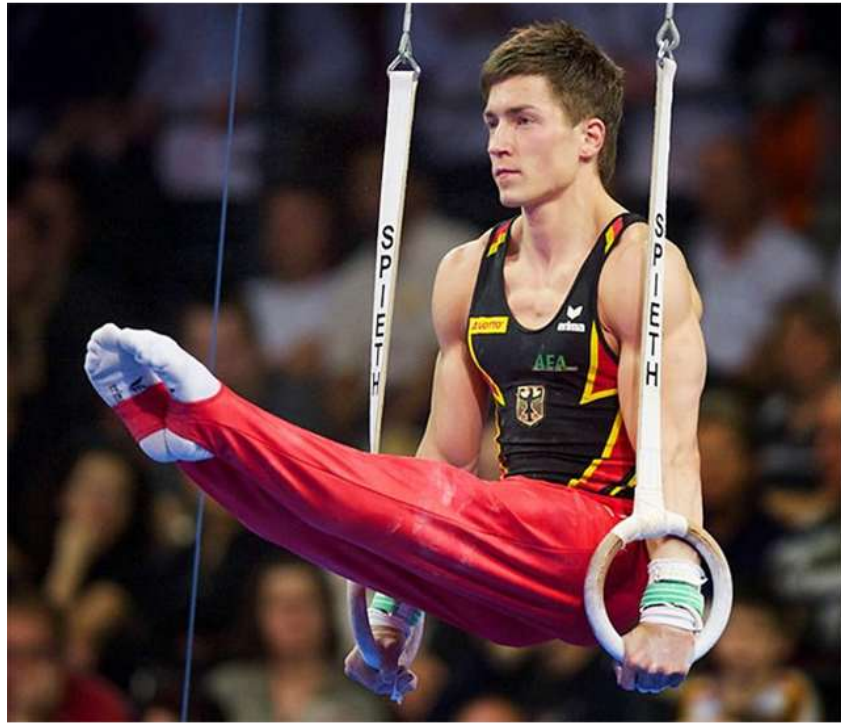
9 Ask and answer.

What time do you practise the violin?

I practise the violin at 7.00 in the evening.

How often do you practise the violin?

I always practise the violin in the evening.







BYE

