

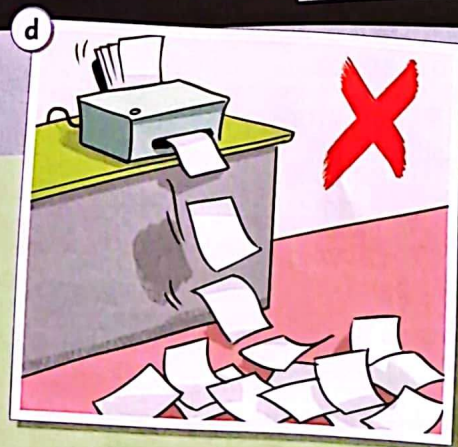
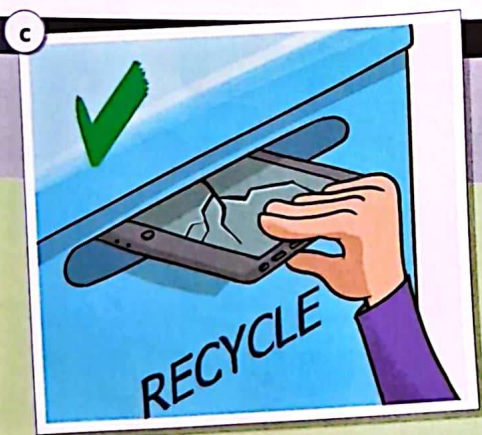
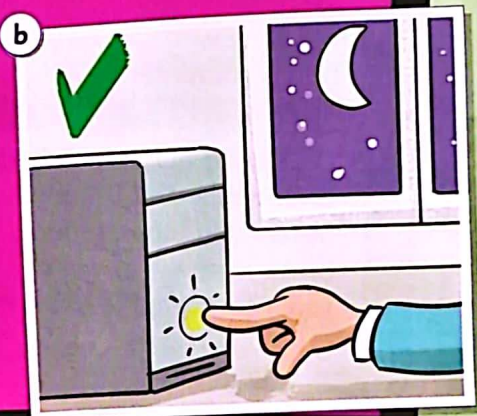
24 Read. Match paragraphs 1–4 with the pictures.

## CLIL COMPUTER STUDIES

### Computers and the environment

People use computers every day. They use them for work, school and **free-time activities**. Computers are **helpful**, but we have to use them **correctly** and **protect** the **environment**.

- 1 We need to turn off computers when we aren't using them. This **saves electricity** and that's good for the environment. It also saves money!
- 2 We need to save paper, too. If we save paper, we will also save our **forests**. You shouldn't print things if they aren't **necessary**. Think before you print!
- 3 We need to **recycle** our old computers, tablets and phones. Don't put them in the **rubbish bin**. It's bad for our **planet**. Put them in the recycling bin.
- 4 We need to recycle **old batteries** too. They can **pollute** our **rivers** and **lakes**. We must put old batteries in a **special** recycling bin. Please, don't forget!



25 Answer the questions.

- 1 When do we need to turn off computers?
- 2 Why is it so important to save paper?
- 3 Where should we put old computers?
- 4 Why are old batteries dangerous?