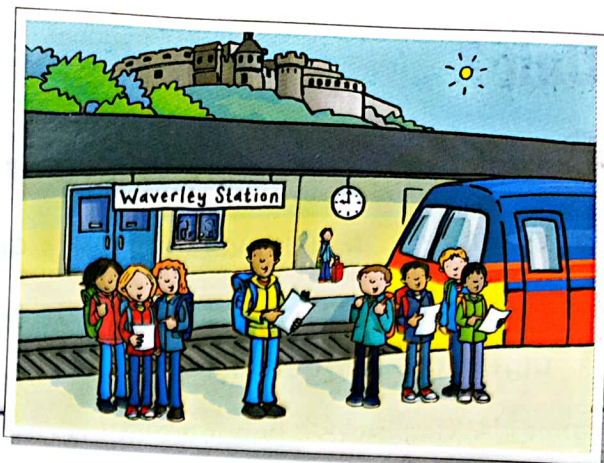


Unit 6



1 Look at the text below. What is it?

- a an itinerary b a poster c a brochure

2 Look and read. How many nights will the children spend on the class trip?

Waverley School Class Trip

DAY 1: Please meet at the train station at 9 a.m. Bring a small suitcase and pack a jacket and an umbrella in case it rains. We will arrive in Castletown at 12 p.m. After lunch, there is the choice of two activities – the climbing centre or the mini-golf course. In the evening, we will go to the theatre followed by dinner in a traditional restaurant.

DAY 2: Full day at the amusement park. Here, you will have a fun day out on some favourite rides like the log flume, big wheel, dodgems and Castletown's famous rollercoaster. An evening's entertainment at the Castletown circus.

DAY 3: Today's fun day out is at Castletown park. There is a skate park and a boating lake. You can choose which activity you would like to do. Lunch will be a picnic in the park. For our last evening, we will go to a pizza restaurant and then watch a film at the cinema.

DAY 4: Free time for souvenir shopping in Castletown in the morning. We will take the 2 p.m. train back to Waverley. Please arrange for your parents to pick you up at the station at 5 p.m.

3 Read and choose the best answer.

- 1 There is a class trip to ... a the theatre b another town c the circus
- 2 On Day 1, all the pupils will go to the ...
a amusement park b climbing centre c theatre
- 3 Castletown's amusement park has got a famous ...
a rollercoaster b circus c big wheel
- 4 Lunch on Day 3 is in ...
a a pizza restaurant b a traditional restaurant c the park
- 5 On Day 4, the pupils will return to ...
a Castletown b Waverley c the amusement park

4 Read, think and discuss.

- 1 Have you ever been on a class trip? Where did you go?
- 2 Why do you think it's important to have class trips?

5 Find these words and expressions in the text. What do they mean? Check in your dictionary. Write the definitions in your notebook.

in case traditional entertainment