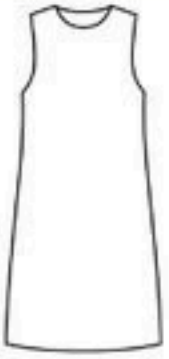


# Clothing Guide

## TYPES OF DRESSES



Shift



X Line



Apron



Sheath



Long Sleeved



Halter



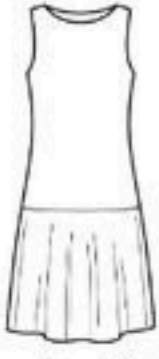
Slip



Pouf



Tulip



Drop Waist



Skater



Asymmetric



Paneled Waist



Sun Dress



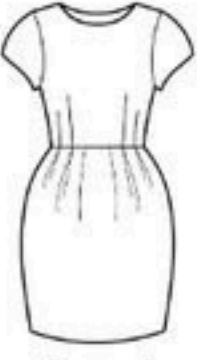
Fit and Flare



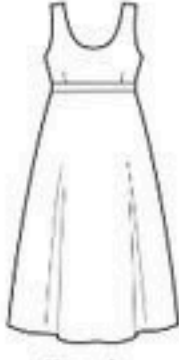
Yoke



Princess Seams



Pegged



Empire



One Shoulder



Tunic



Wrap



Shirt



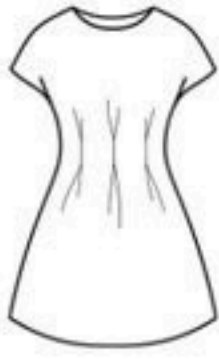
A-Line



Blouson



Bodycon



Nipped Waist



Peplum



Strapless



Caftan



Baloon



Qi Pao



Tent



Baby Doll



Cut Out



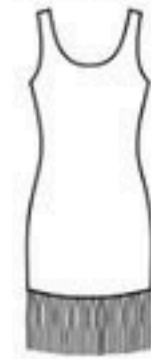
High Waist



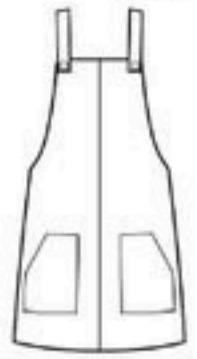
Smock



Dolman



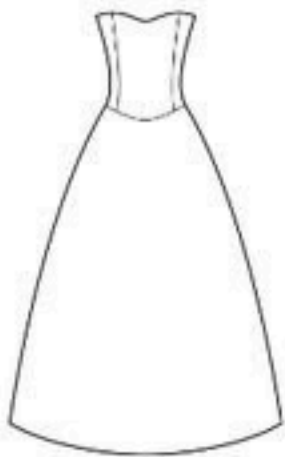
Flapper



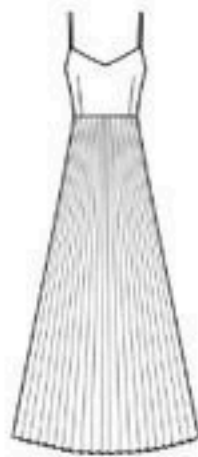
Jumper



Bias



Ball Gown



Pleated



Maxi



Bouffant



Sweet Heart