

Making a circuit

Task based activity

Please bring the following items at school (next session)

- 1.battery
- 2.small lamp
- 3.bulb holder
- 4.wire
(50 centimeters)



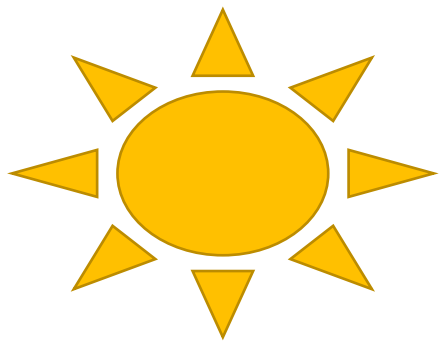
Alavi

Topic: Science

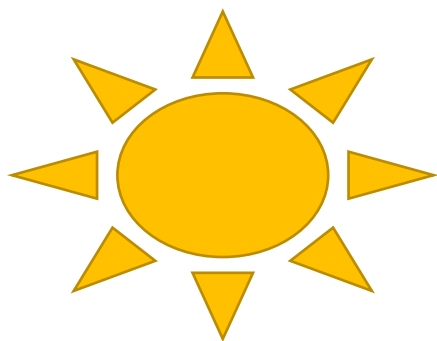
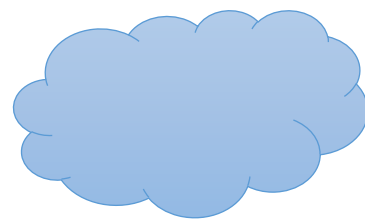
Level:

Date:

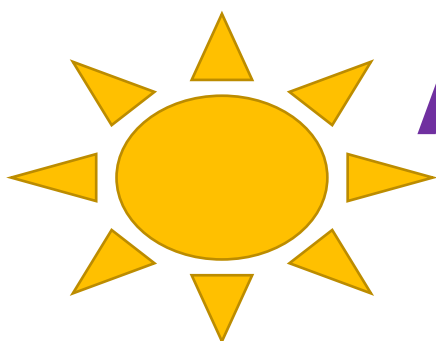
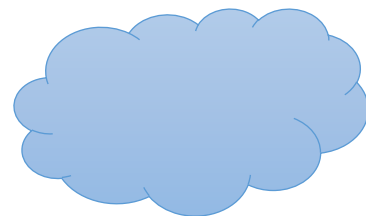
No:



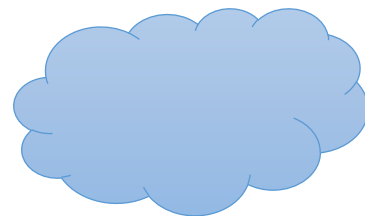
Check



Your



Answer



Put the words into the right category?

Sand

Milk

Steam



Rain

Wood

Chocolate



Helium

Ice

Juice



Put the words into the right category?

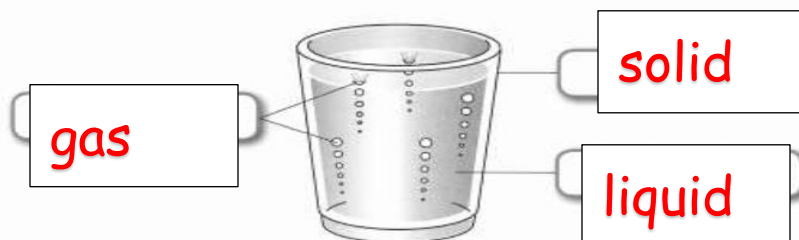
| solid | liquid | gas |
|-----------|--------|--------|
| Sand | Rain | Helium |
| Wood | Milk | Steam |
| Chocolate | Juice | |
| Ice | | |

3.1 Matter

solid, liquid, gas, matter, phases

Identify solids, liquids and gases

Look at this picture of a glass of soda.



- a. phases
- b. particles
- c. oxygen
- d. wooden
- e. vinegar

2 Look at these sentences about matter. Fill in the gaps using the words from the box.

wooden vinegar **phases** oxygen particles

- a Solid, liquid and gas are the three _____ of matter.
- b All matter is made of tiny pieces called _____.
- c _____ is an example of a gas.
- d A _____ chair is an example of a solid.
- e _____ is an example of a liquid.

Complete the table by choosing the word from the cloud.

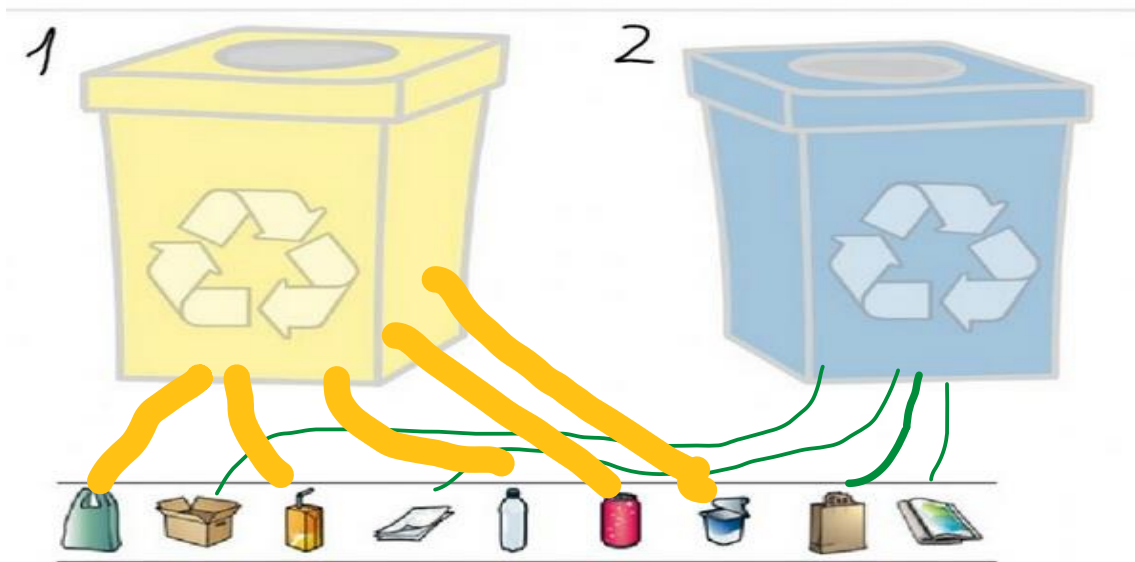
flood, over hunting
conserving of natural resources
water pollution, oil spill
earthquake, planting trees, recycle

| man-made disaster | natural disaster | ways to protect nature |
|---------------------------|-----------------------|---|
| 1. over hunting | 4. flood | 6. conserving of natural resources |
| 2. water pollution | 5. earthquake | 7. planting trees |
| 3. oil spill | XXXXXXXXXX | 8. recycle |

Match the items to the the correct recycle bin.



Look, and write the number of correct bin.



Electricity**1. Things that you plug in use mains electricity.**

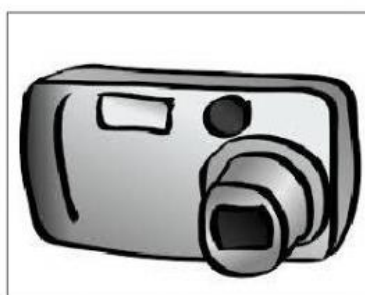
A cell which store electricity is called a battery. They are used for things that people carry like torches or mobile phones.

Which of these things use mains electricity or battery to work?

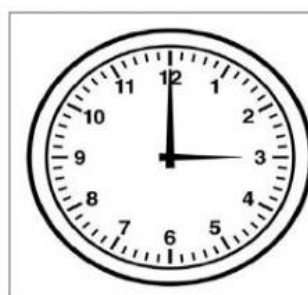
Observe the things given below and write the names in the correct column.



Bulb



Camera



Clock



Oven



Washing machine



Remote

| mains electricity | battery |
|-------------------|----------|
| 1.bulb | 4.camera |
| 2.oven | 5.clock |
| 3.washing machine | 6.remote |