



A large red speech bubble graphic with a tail pointing to the right, containing the text "Session 19".

Session 19

Lead-in

Game:

Putting students in groups.

Each group has the names of the items in

The next slide.

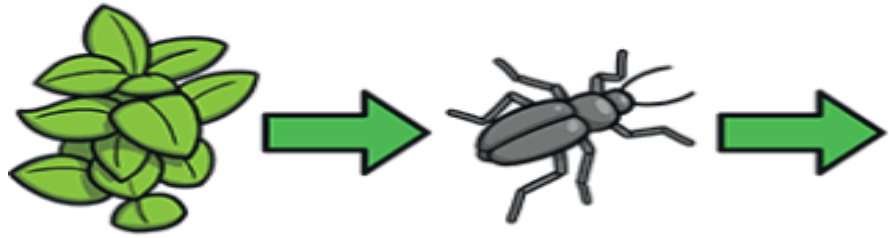
They are asked to put the items **in order**.

Group work.

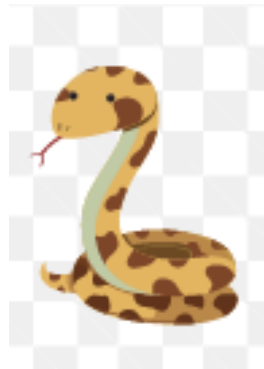
Put the words in order based on
this question:

"Which animal is eaten first?"

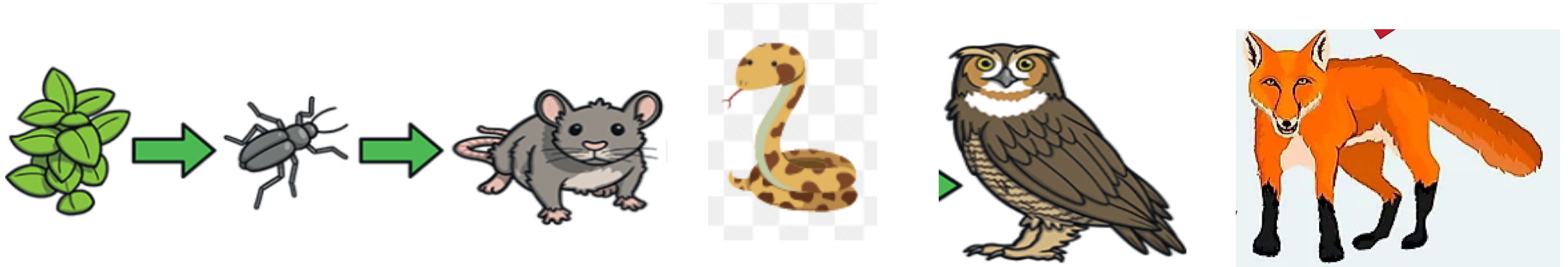
Grass is eaten by a beetle.



A beetle is eaten by a

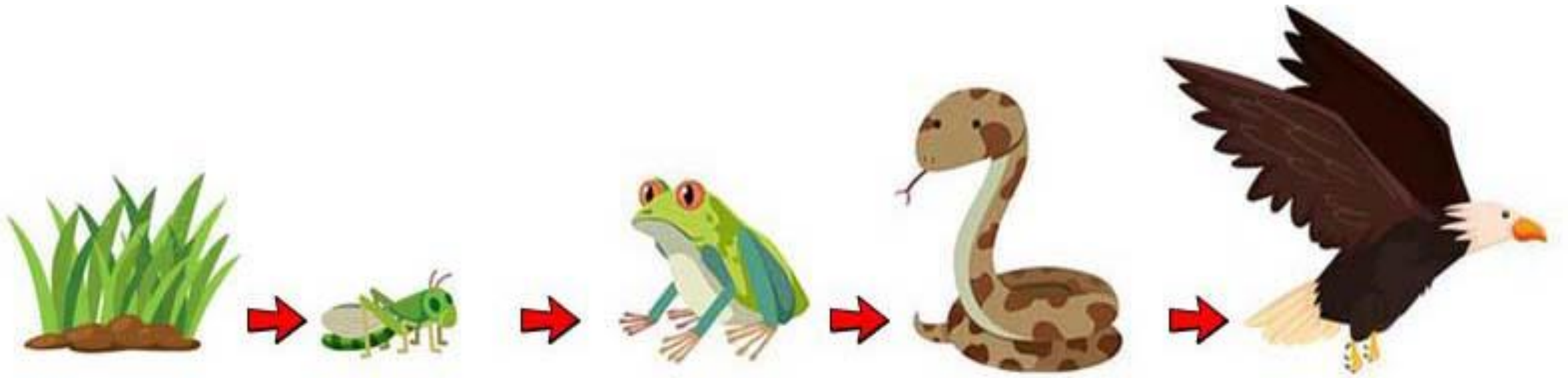


You made a “**food chain**”.



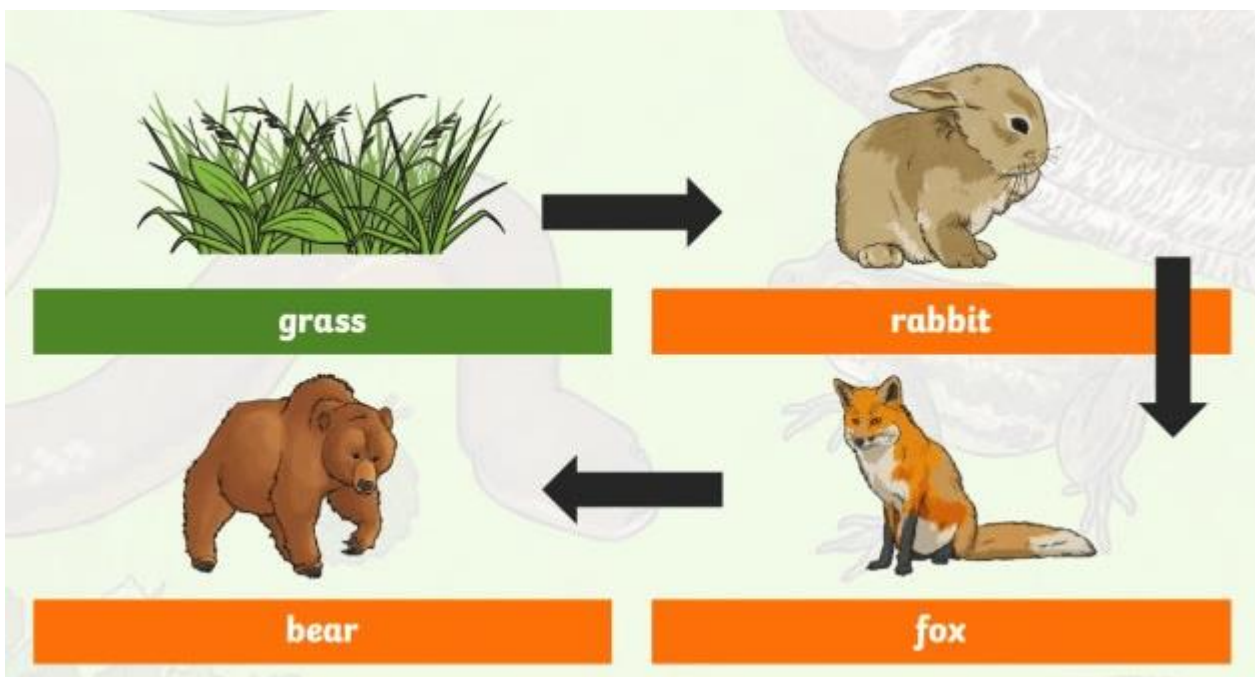


chain



food chain

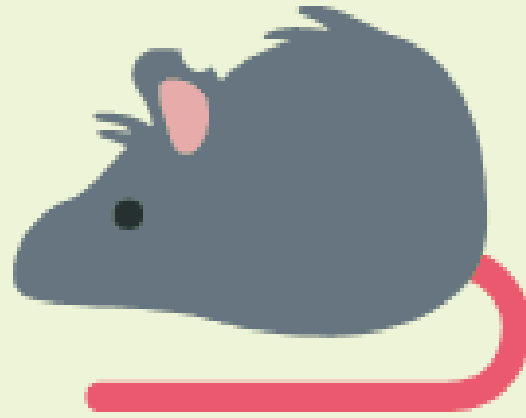
A **food chain describes** (talks about) the feeding relationship between a plant and an animal.



Grass **is eaten by** a rabbit.

The rabbit **is eaten by** a fox.

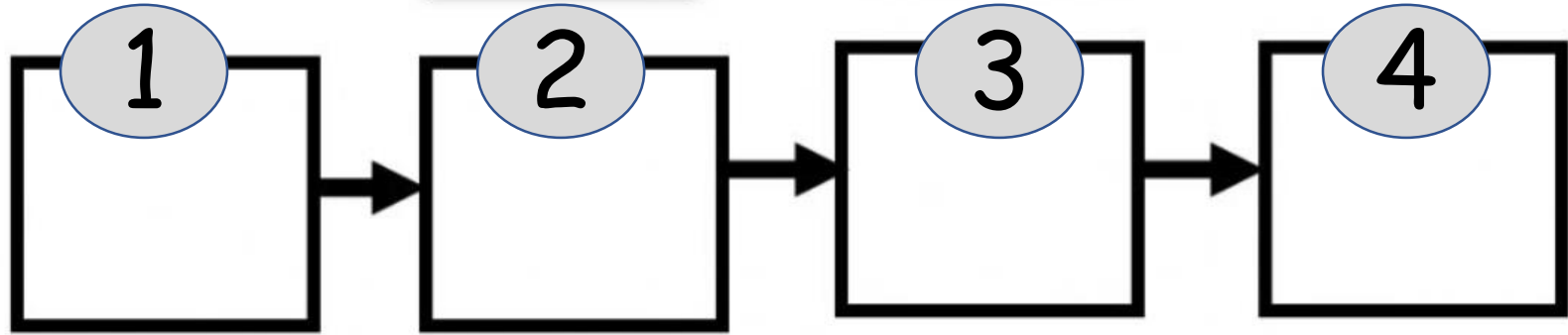
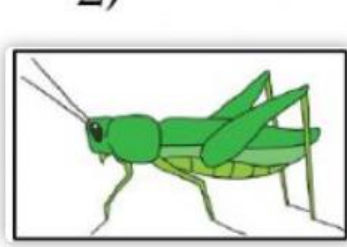
The fox **is eaten by** a bear.



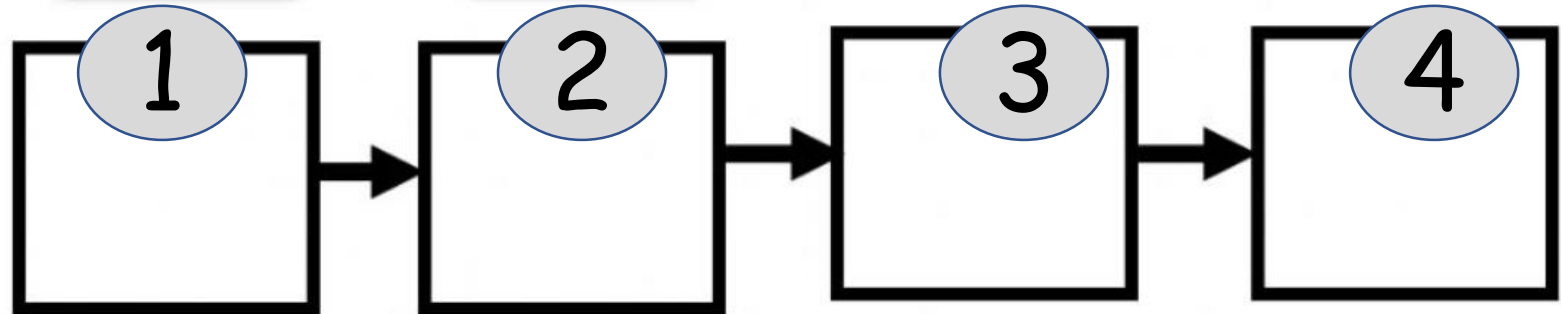
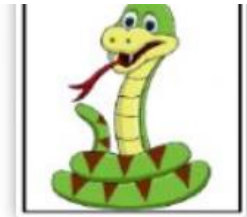
Corn is
eaten by
a rat.

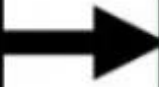
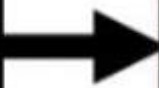
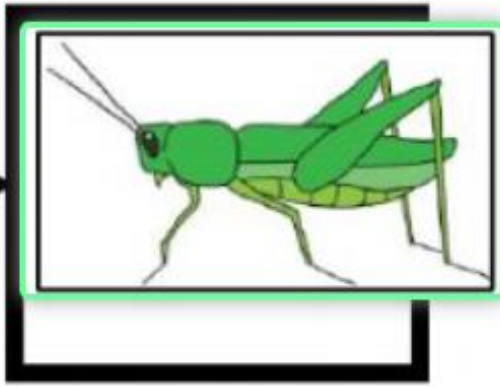
A rat is
eaten by
an owl.

Put the pictures in order so they show a food chain.



corn





is eaten by
is eaten by

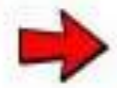
grasshopper

is eaten by

snake



grass



frog



eagle

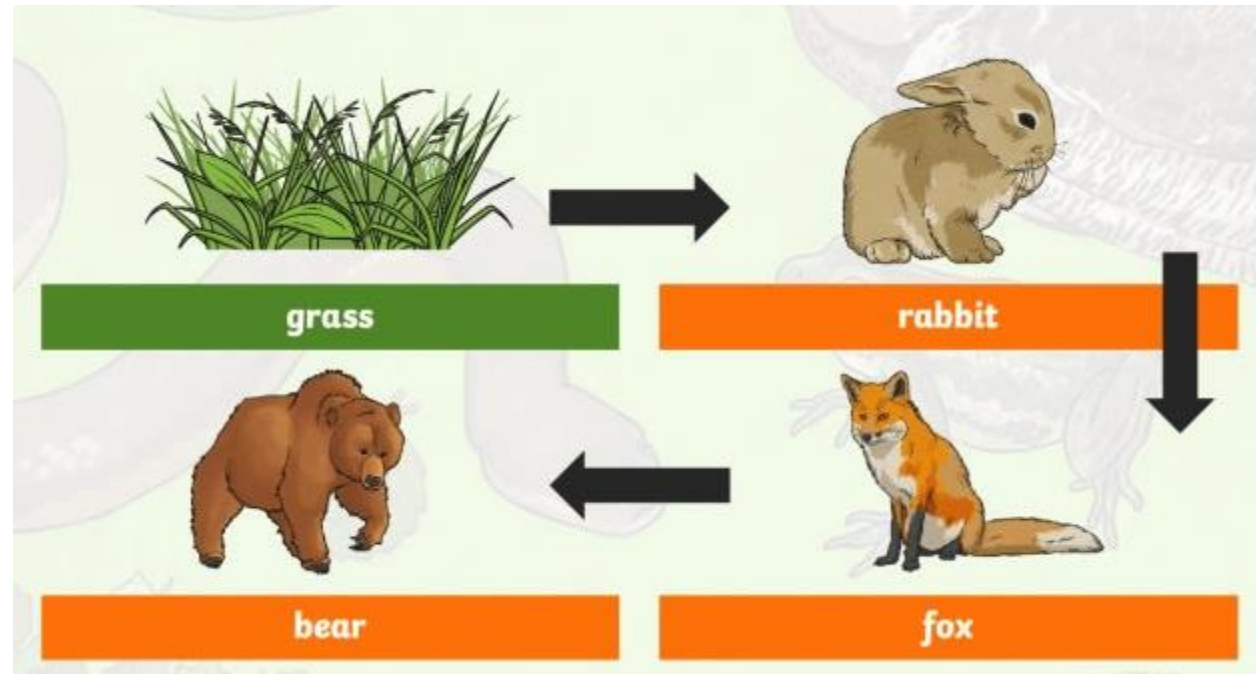
is eaten by

is eaten by

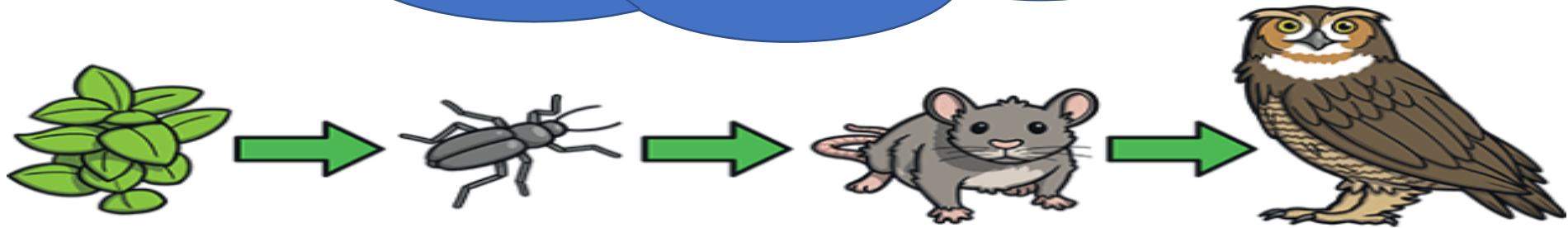
Complete the food chain "is eaten by".

A food chain describes (talks about)

What is a food chain?



Write down the
food chains.



Group work: Design a food chain.

