

**Alavi**

**21<sup>st</sup> Century Schools**

# Body Organs



**Alavi**

It is found inside the chest, slightly to the left

Alavi



It has two sides

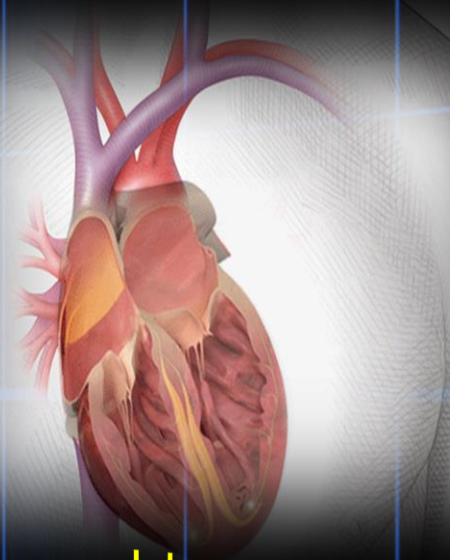
It never stops

It is special muscle.

It's protected by the ribs. It pumps blood to every part of the body

Alavi

It takes less than a minute to pump  
blood to every part of your body



When the heart muscle squeezes to pump blood,  
you can feel a heartbeat  
The heart does this all the time and never stops.

# Circulatory System

It pumps blood through body

The left side of heart  
(**red** in the diagram)

pumps blood all around the body

It contains oxygen

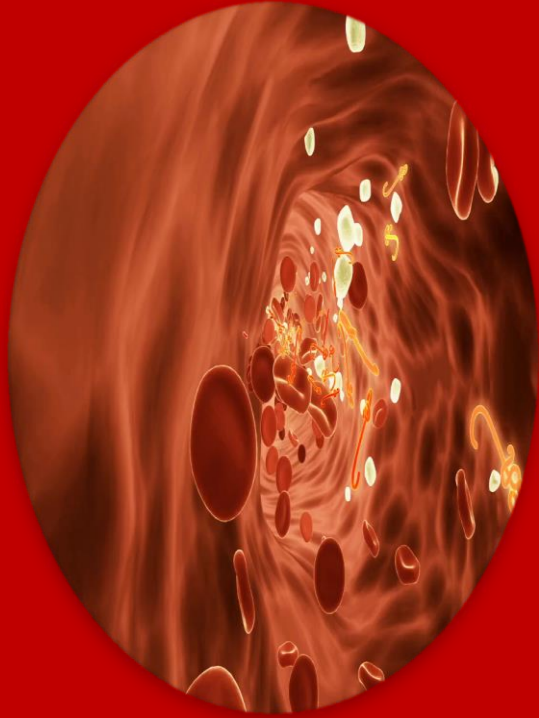
The right side

(**blue** in the diagram)

pumps blood without oxygen to the  
lungs only



*circulation*



It pumps blood to every part of the body