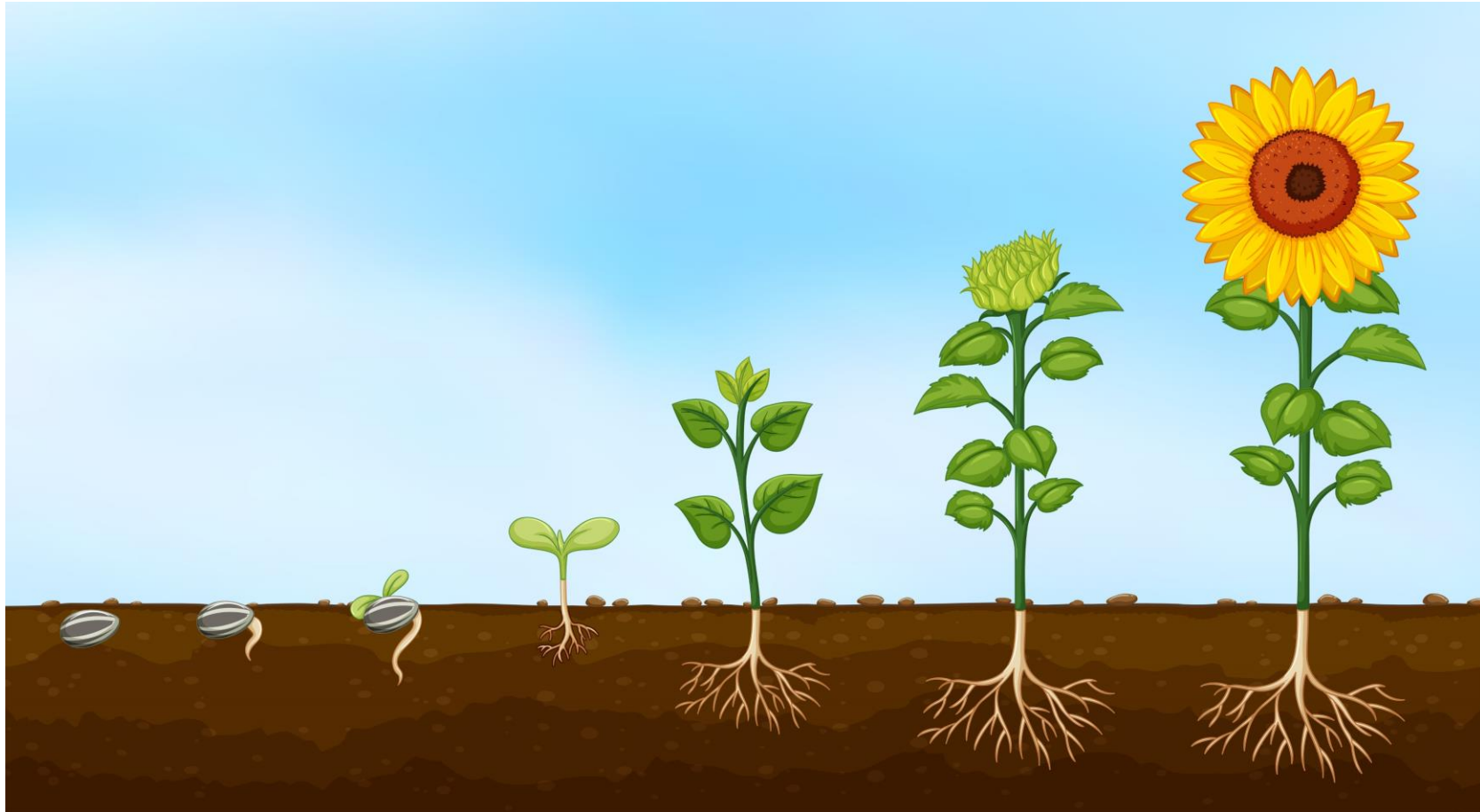


A solid red rectangular background that serves as a backdrop for the text.

Alavi

21st century school

How does a plant grow?



1. After a **seed** is planted ,



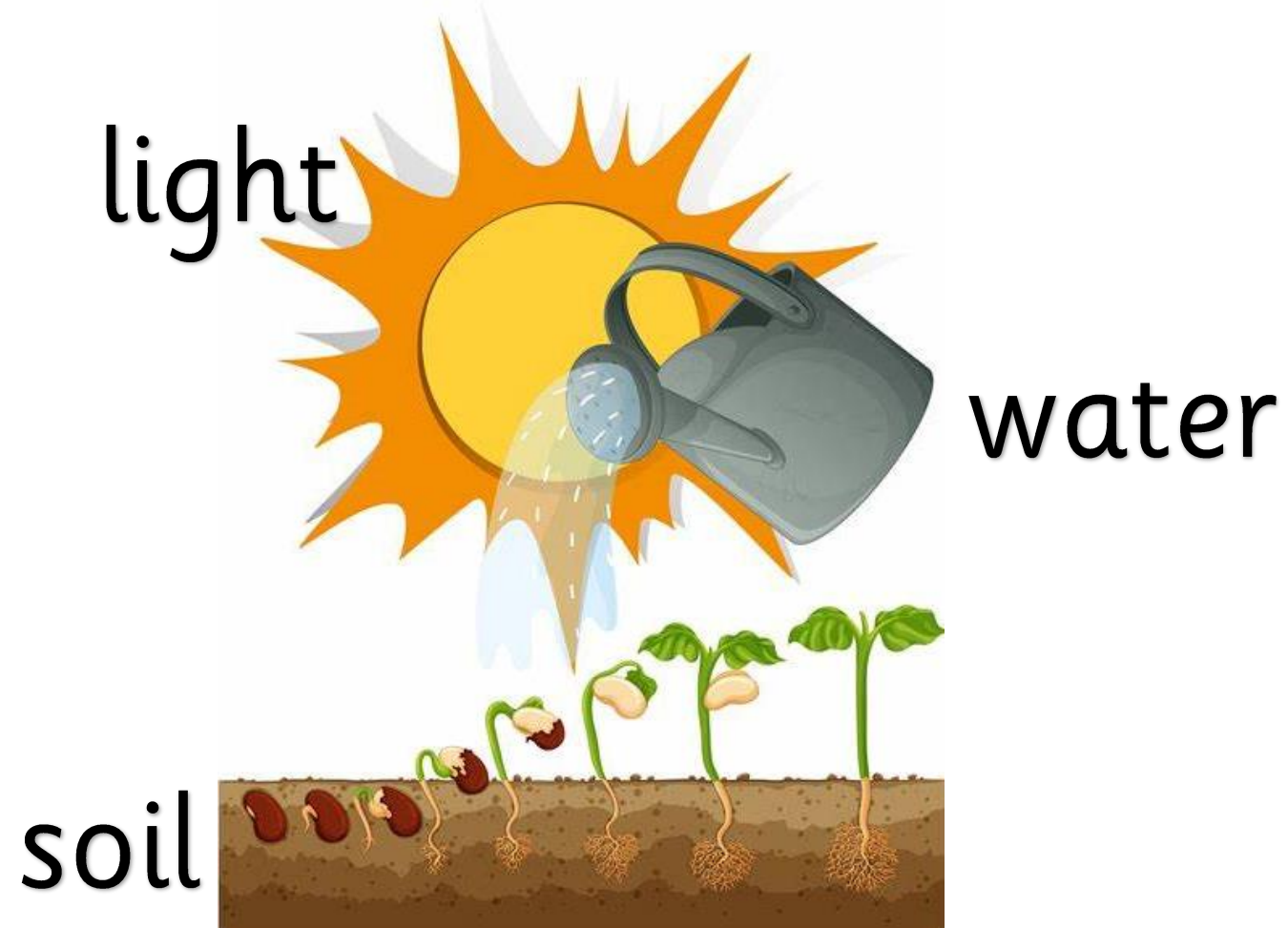
2. It needs **water** ,



3. Then it becomes a young plant,



4. It need **light**, **water**, **soil** and **air** to continue growing,



5. It is bigger and it has flower,



6. This is a **full-grown** plant.

