

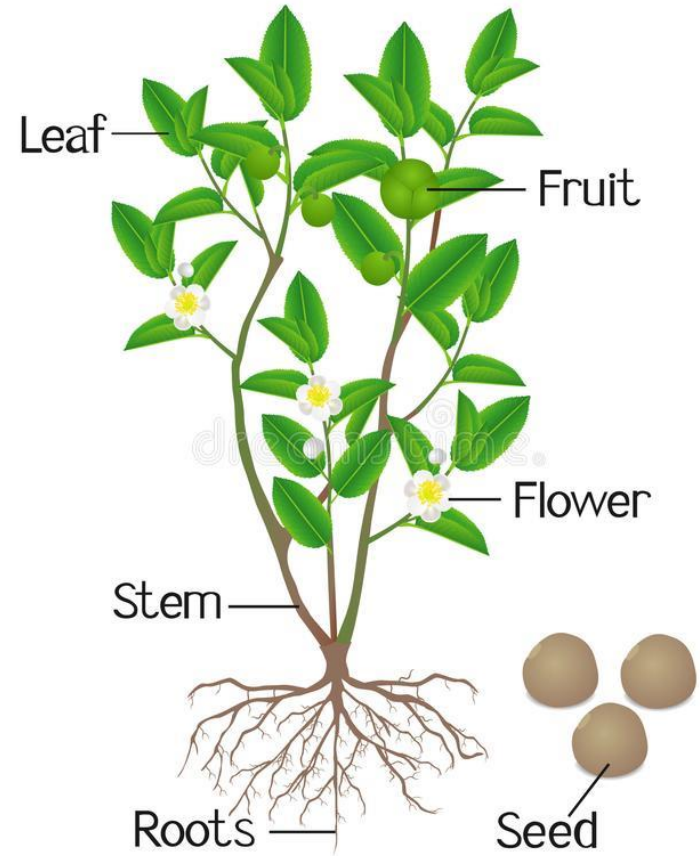
AT THE FRUIT FARM





plant

parts of a plant



roots



roots



Can you spell it?



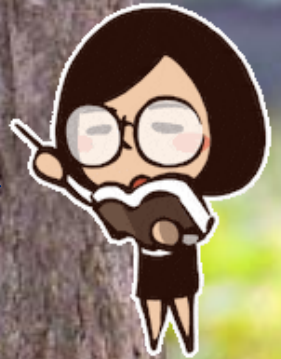
r o o t s

A photograph of several young tomato plants growing out of dark brown soil. The plants have green, lobed leaves and thin, upright stems. The background is a bright, out-of-focus blue sky. In the bottom left corner, there is a pink rectangular box containing the word 'stem' in dark blue text. Two pink arrows point from this box towards the stems of the two plants immediately to its right.

stem

s t e m

Can you spell it?





flower



flower



flower

fruit trees also
have flowers



Can you spell it?



f l o w e r



leaf



A leaf can be of different
shapes and sizes



leaf



leaf



Can you spell it?



l

e

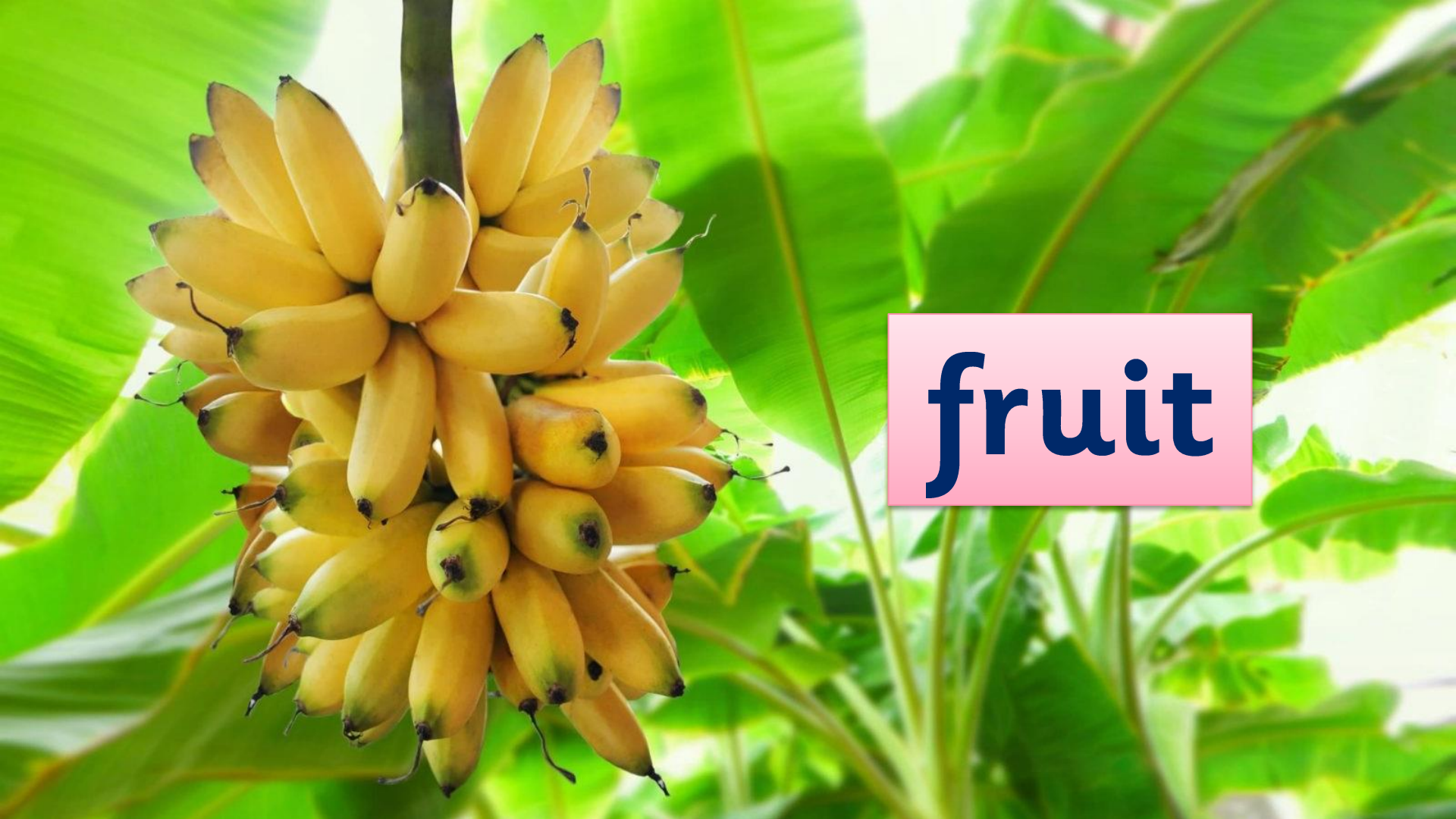
a

f



fruit





fruit



Can you spell it?



f

r

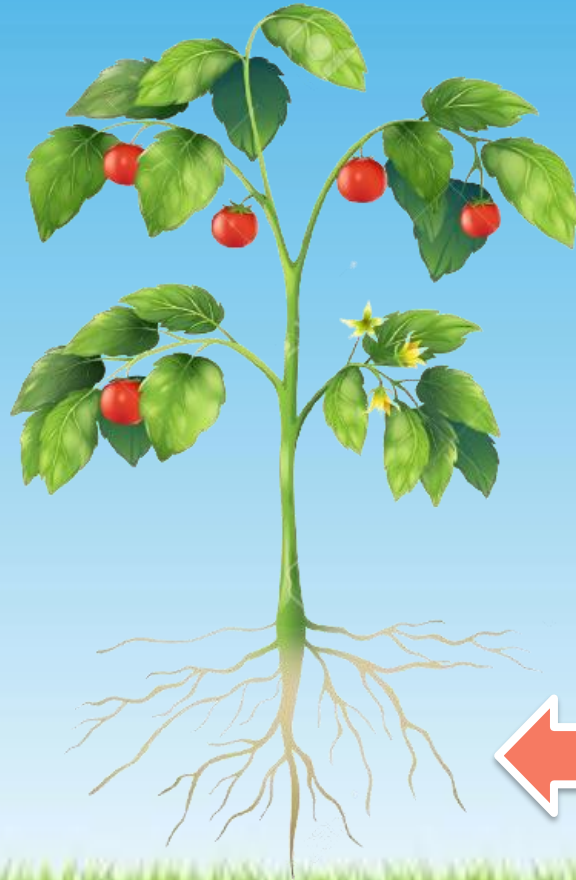
u

i

t

review

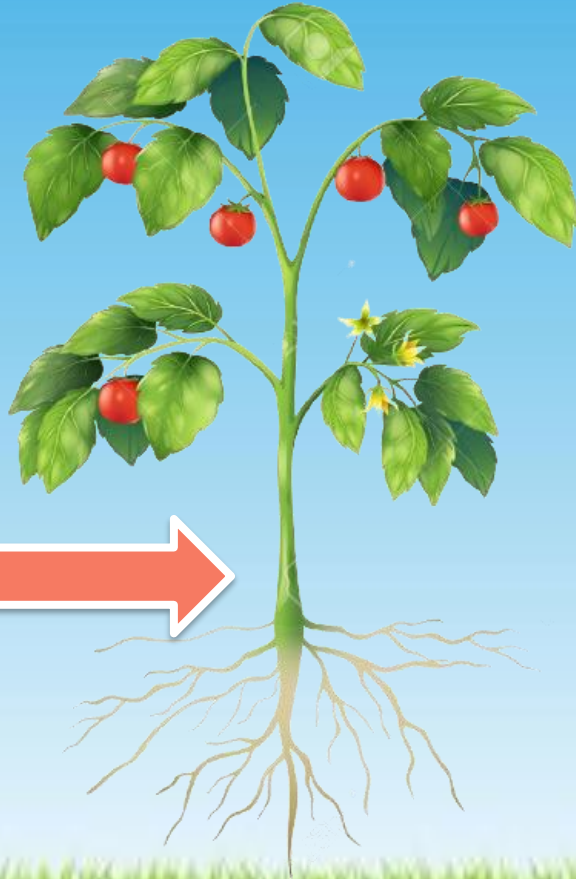


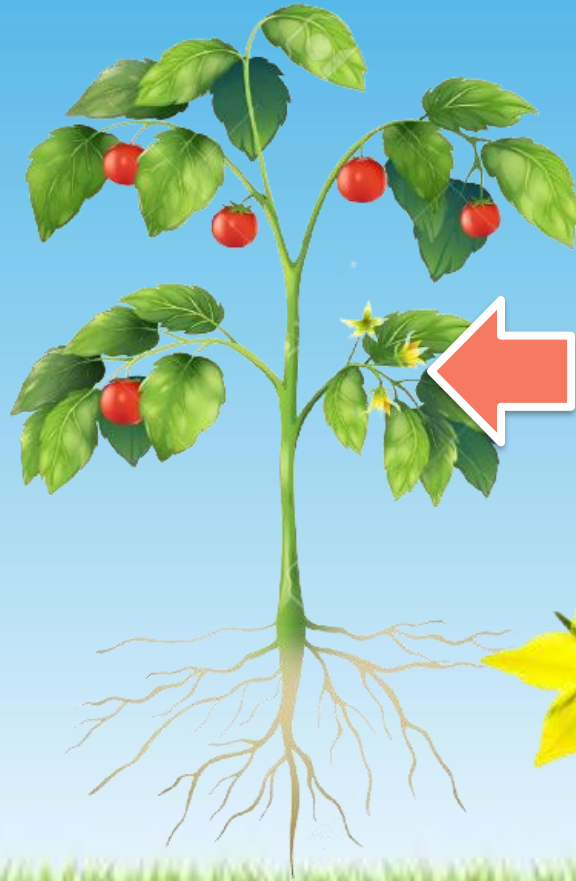


roots



stem

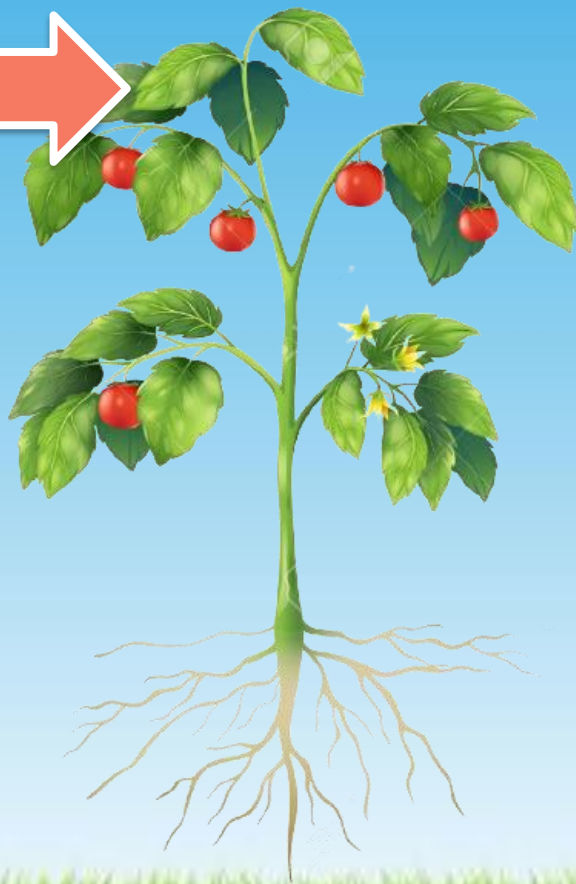


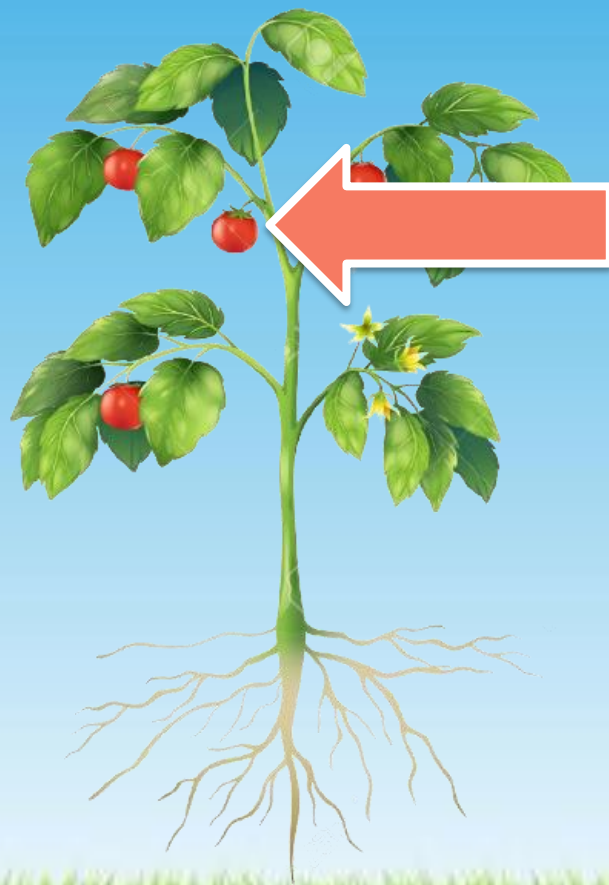


flower



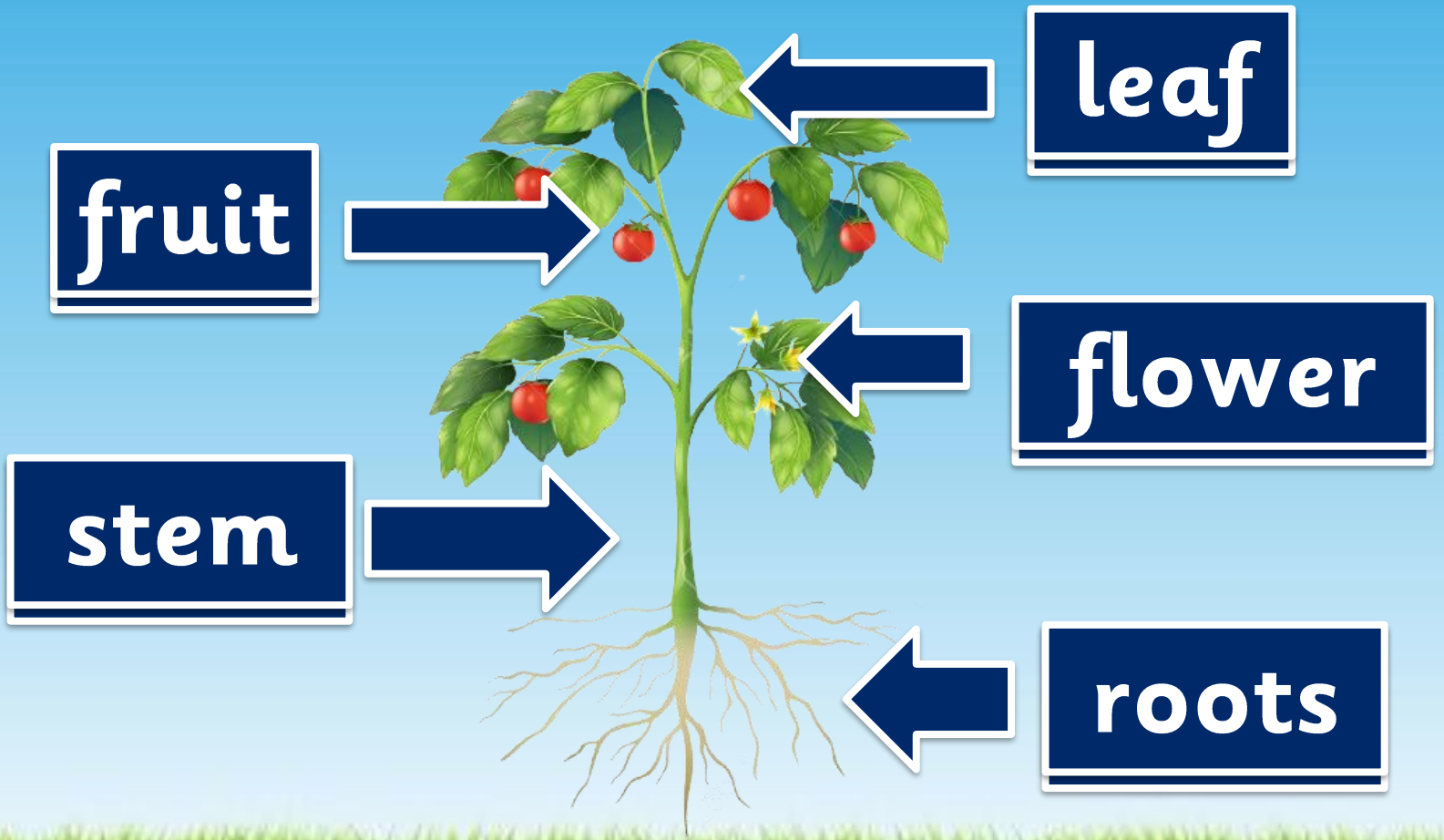
leaf





fruit





Let`s
practice





flower



roots



leaf



fruit

roots



A photograph of several young tomato plants growing out of dark brown soil. The plants have green, serrated leaves and thin, light green stems. A red rectangular box with the word 'stem' in white lowercase letters is positioned in the lower-left foreground. Two red arrows with white outlines point from the stems of the plants towards the right. The background is a bright, out-of-focus blue sky with some green foliage visible.

stem



flower

leaf



THANK YOU!

