

* 6.1. Seeds and fruits

Have you ever swallowed a seed when you were eating an apple or an orange? We find seeds inside fruits. Fruits and seeds can be different sizes and shapes.

This apple has been cut in half to show the seeds.



An avocado pear has one large seed.



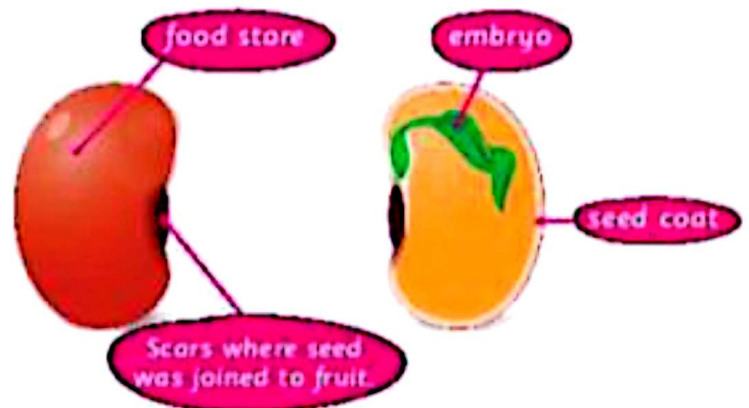
Bean seeds are found inside a pod.



A poppy's fruit contains the seeds.



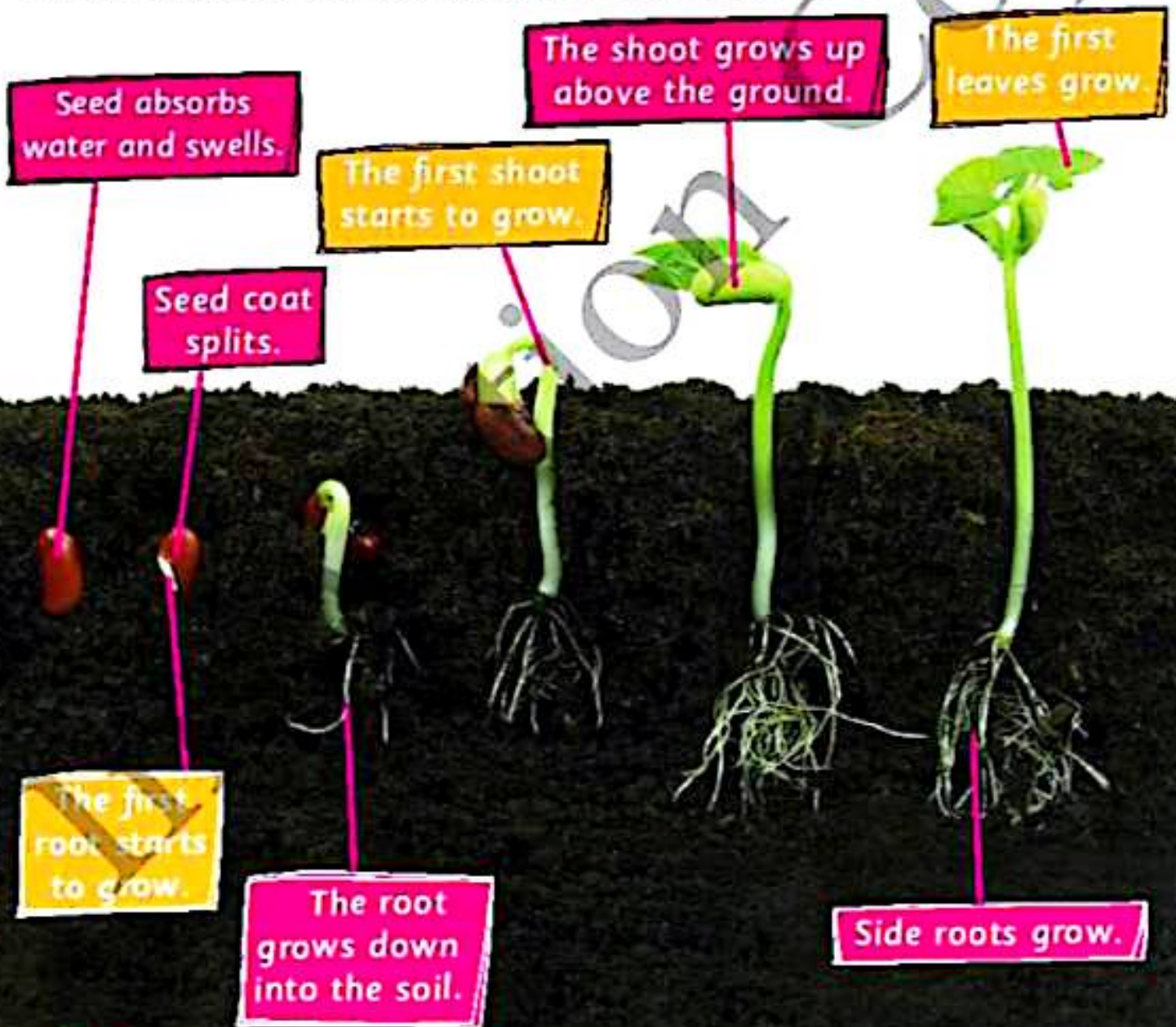
Here is a bean seed with its parts labeled.



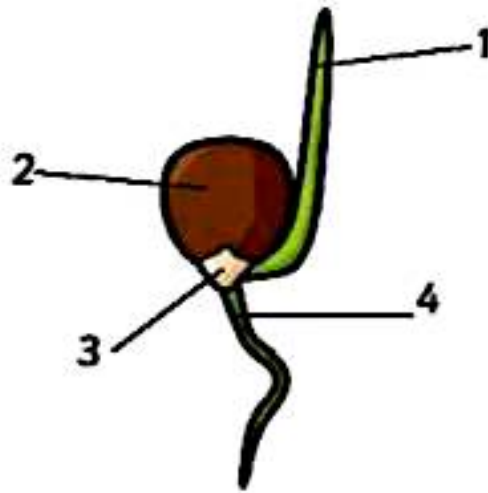
* 6.2 How seeds grow

Germination

If a seed is given the right conditions, and the embryo is alive, it will grow. When a seed starts to grow, we say it **germinates**. This process is called **germination**. The seed uses its food store to give it the energy to grow. The seed shrivels and becomes small after germination. Here are the stages in germination of a bean seed:



Here is a picture of a germinating seed. Write down the names of parts 1 to 4.



Match the words in column A with their meanings in column B.

column A

1 seed

2 embryo

3 seed coat

4 germinate

5 environment

column B

A the outer cover that protects the seed

B when a seed starts to grow

C everything around us

D part of plant that can grow into a new plant

E part of a seed that grows into a new plant

6.3. What do plants need to grow?

Plants need certain things from the environment to help them grow. We call these things **factors**. Without these factors, plants will not grow well, or they might even die. Look at these pictures. Which plant is healthy and growing well?



Write down the things that plants need to grow.
Fill in the gaps using words from the box.

light	water	air	warmth	factors
-------	-------	-----	--------	---------

- a) We call the things that plants need to grow
- b) Plants need so they can make food to help them grow.
- c) Plants need to give them strong stems and firm leaves.
- d) Plants need but they grow best when it is not too cold or too hot.
- e) Plants need because they are living things.

 The factors plants need are light energy, air, water and warmth.

