

Teacher's Name:

Date:

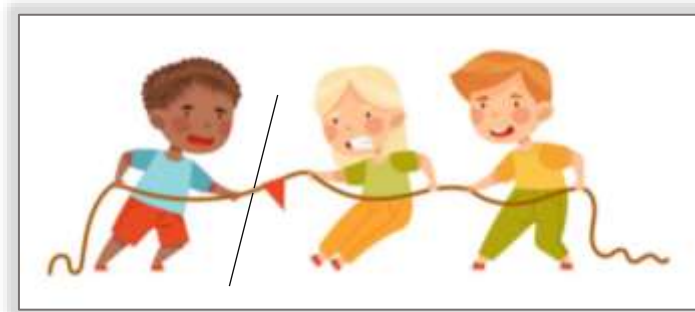
Student's Name:

Grade:

1. Read and circle.

- A. A material that doesn't allow electricity to pass through is called a conductor / an insulator, like plastic.
- B. Cells and batteries push electricity / light round a circle.
- C. If the forces acting on an object are balanced (the same size), the object will start moving / remain stationary.
- D. When a snake catches a mouse, the snake is the predator / prey.
- E. The stomach and the intestines / lungs digest food.

2. Look at the picture and answer the following questions.



- A. Are the forces pushing or pulling?

- B. Are the forces opposite forces or are they working together?

- C. Are the forces equal?

- D. Do the forces balance each other?

- E. Is the bigger force pulling to the left or to the right?

- F. Is the movement to the left or to the right?

3. Read and choose the right word.

soluble

solvent

insoluble

solute

This picture shows seawater. Seawater is a solution.

Some solids like salt can dissolve in a liquid. They are called _____ substances. On the other hand, some solids like sand do not dissolve in a liquid. We say they are _____ substances.



Solutions always have two parts. The substance that dissolves is called the _____, like salt in seawater, and the liquid in which it dissolves, is called the _____, like water in seawater.

4. Look at the change shown in this picture, then answer.

Type of change: reversible / irreversible

Because: _____



5. Read and write *True* or *False*.

- A. Freezing water is an irreversible change.
- B. Forces can change the direction of a moving object, like when you hit the tennis ball.
- C. When you rub your hands together, they feel warmer.
- D. Friction helps objects grip on surfaces.
- E. Energy-efficient bulbs use more energy.